

**ADDENDUM NO. 1
SANTA ANA RIVER FLOOD WALL REMEDIATION
WORK ORDER: F02613
AREA: Colton & San Bernardino**

BIDS OPEN 10:00 AM, TUESDAY, NOVEMBER 5, 2019

By Email via ePro System or Facsimile and Regular Mail with Telephone Confirmation (Paper Plan Holders)

Amend the Construction Drawings as follows:

1. Sheet 3 of 11 (Drawing No. P-2): Delete and replace with attached Sheet 3A of 11; added additional bollard removals.
2. Sheet 4 of 11 (Drawing No. P-2): Delete and replace with attached Sheet 4A of 11; revised fence limits in plan view and added additional bollard removals.
3. Sheet 5 of 11 (Drawing No. P-3): Delete and replace with attached Sheet 5A of 11; revised limits of existing concrete pavement and asphalt pavement, added additional tree and bollard removal.
4. Sheet 6 of 11 (Drawing No. P-3): Delete and replace with attached Sheet 6A of 11; added additional sign relocation.
5. Sheet 7 of 11 (Drawing No. D-1): Delete and replace with attached Sheet 7A of 11; revised limits of sections, added new typical section.
6. Sheet 8 of 11 (Drawing No. D-2): Delete and replace with attached Sheet 8A of 11; revised label of Typical Flood Wall to Typical Parapet Wall for clarity.

Amend the Special Provisions as follows:

7. **Bid Proposal Package (Loose Insert), replace the following pages:**

Replace page P-3 with attached Addendum 1, P-3. **This page shall be used for bidding purposes.**

The addition of these requirements shall be considered in concert with existing documents in preparation of bids. **THE BIDDER'S CERTIFICATION FOR THIS ADDENDUM NO. 1 SHALL BE SIGNED BY THE SAME PERSON WHO SIGNS THE PROPOSAL AND SHALL BE SUBMITTED WITH THE PROPOSAL. ANY proposal not accompanied by a signed BIDDER'S CERTIFICATION (below) acknowledging receipt of this Addendum No. 1 will NOT be accepted.**

KEVIN BLAKESLEE, PE, Director
Department of Public Works
By:



Mohammad Ali, P.E., Chief
Contracts Division

MA:LW:mb
Attachment: as noted

BIDDER'S CERTIFICATION

By my signature hereunder, I acknowledge receipt of Addendum No. 1 and I fully understand the intent and detail of Addendum No. 1, which I have considered in my preparation of the attached proposal.

Bidder's Signature

Date

Note: The page containing the executed BIDDER'S CERTIFICATION (just this page), must be included with the proposal.

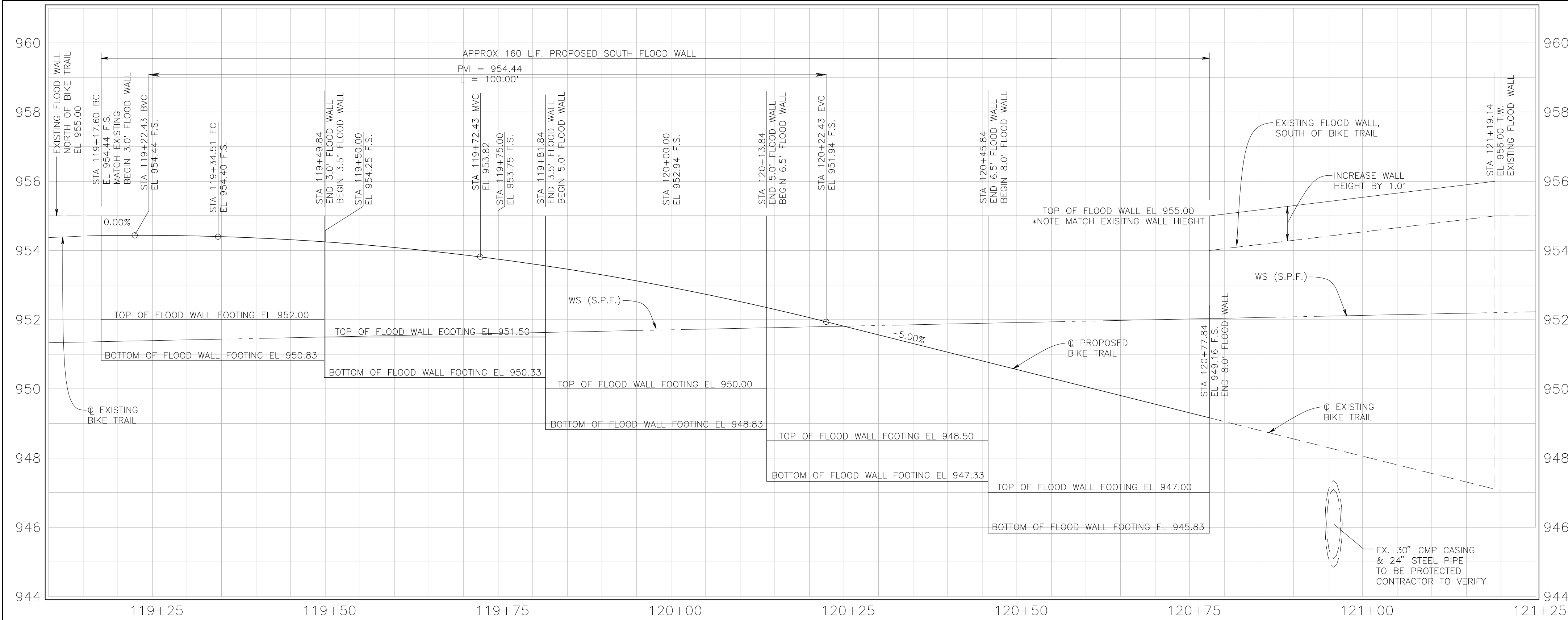
Project: *Santa Ana River Floodwall Remediation***W.O.#:** *F02613***Limits:** *South Levee @ S.P.R.R. and @ "E" Street*

Item No.	Approx. Quant.	Meas. Unit	Item Description	Unit Price	Total
1	1	L.S.	Job Site Management	\$	\$
2	1	L.S.	Mobilization	\$	\$
3	1	L.S.	Develop Water & Power Supply	\$	\$
4	1	L.S.	Construction Protection, Diversion & Control of Water	\$	\$
5	1	L.S.	Trench Excavation Safety / Shoring	\$	\$
6	1	L.S.	Traffic Control System	\$	\$
7	1	L.S.	Clearing & Grubbing	\$	\$
8	1	L.S.	On-Site Environmental Mitigation	\$	\$
9	1	L.S.	Locate and Protect Existing Utilities	\$	\$
10	240	L.F.	Remove Existing Chain Link Fence	\$	\$
11	600	S.Y.	Remove Existing Concrete Pavement & Slope Protection	\$	\$
12	1,160	S.Y.	Remove Existing Asphalt Concrete Pavement	\$	\$
13	725	C.Y.	Structure Excavation	\$	\$
14	2,000	C.Y.	Wall Backfill & Embankment	\$	\$
15	1,275	C.Y.	Import Borrow	\$	\$
16	28	C.Y.	Class 1 Concrete - Reinforced Concrete Parapet Wall	\$	\$
17	390	C.Y.	Class 1 Concrete - Reinforced Concrete Flood Wall and Flood Wall Extension	\$	\$
18	434	C.Y.	Class 1 Concrete - Reinforced Concrete Pavement	\$	\$
19	83	C.Y.	Class 1 Concrete - Reinforced Concrete Slope Protection	\$	\$
20	8	C.Y.	Class 1 Concrete - Cross-gutter & Down Chute	\$	\$
21	45	C.Y.	Class 1 Concrete - Cut Off Walls for Pavement and Slopes	\$	\$
22	445	L.F.	Install Chain Link Fence- R/W (Type CL-6)	\$	\$
23	1	L.S.	Paint 4" Traffic Stripe & Pavement Markings	\$	\$
24	4	EA.	Remove & Dispose Trees and Stumps	\$	\$
25	10	EA.	Relocate Signs	\$	\$
26	1	EA.	Relocate Pipe Gate	\$	\$
27	2	EA.	Install Pipe Gate (L=12' & L=14')	\$	\$
28	5	EA.	Remove & Salvage Bollards	\$	\$
29	1	EA.	Adjust Gate to Grade	\$	\$

PROJECT TOTAL: \$

Addendum No. 1, P-3

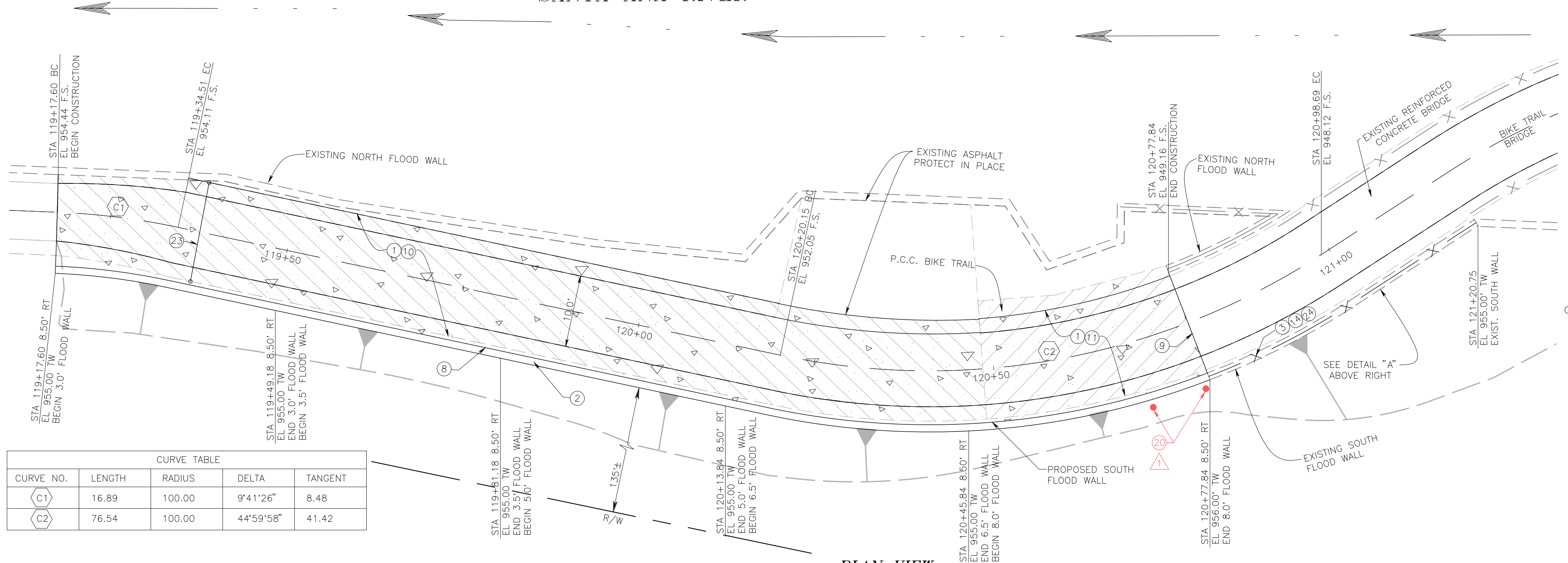
S:\F026\13 - Santa Ana River Floodwall\FINAL DESIGN\Santa Ana River Floodwall Repair- (Redesign). Oct 2018 with Revisions.pro



PROFILE VIEW

HORIZONTAL SCALE 1" = 10'
VERTICAL SCALE 1" = 2'

SANTA ANA RIVER



PLAN VIEW

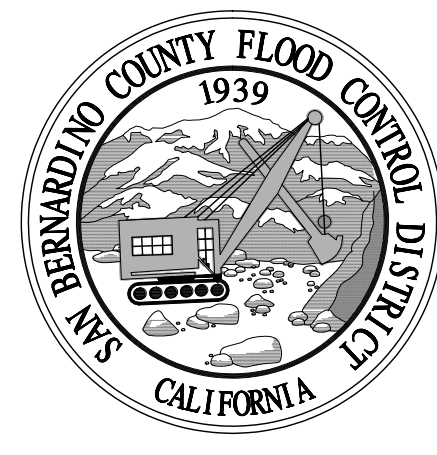
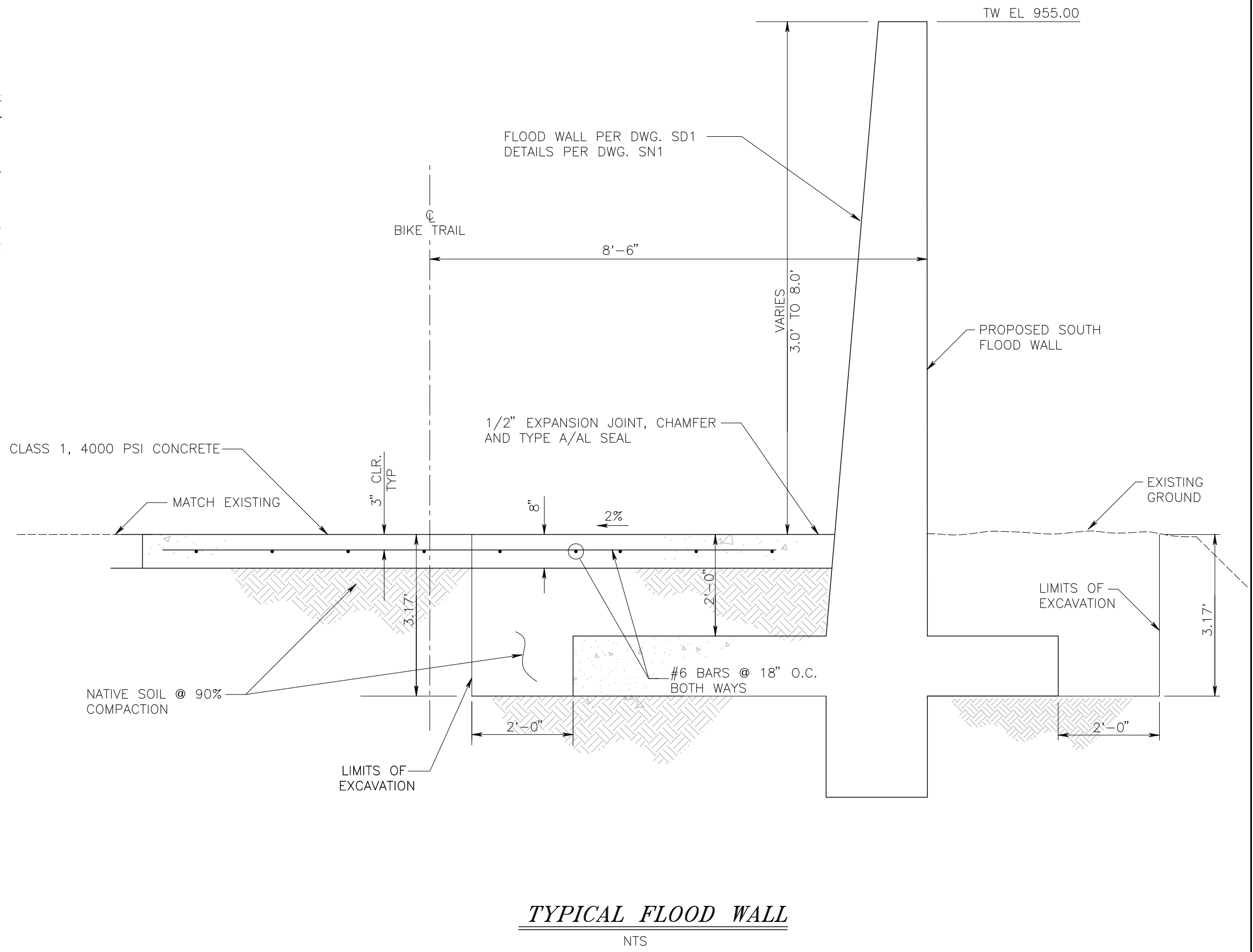
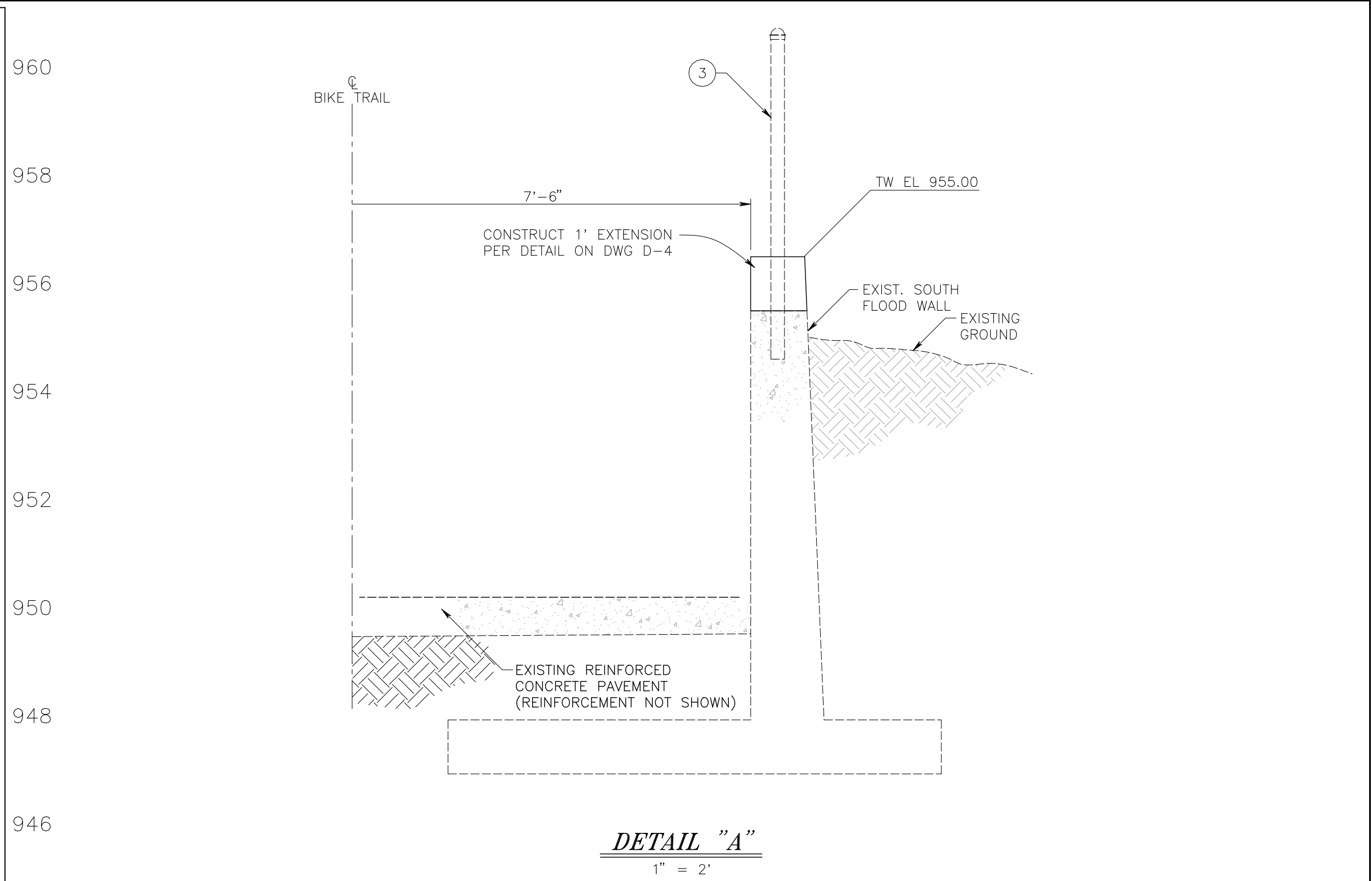
SCALE 1" = 10'

CONSTRUCTION NOTES:

- 1 CONSTRUCT CONCRETE BIKE TRAIL SEE DETAIL ON DWG. D-2
- 2 CONSTRUCT FLOOD WALL PER SD1 ON DWG. D-3 AND SN1 ON DWG. D-4
- 3 REMOVE EXISTING CHAIN LINK FENCE /OR GATE.
- 8 INSTALL 1/2" EXPANSION JOINT AND TYPE A/AL SEAL AT TRAIL SLAB/FLOOD WALL INTERFACE
- 9 CONSTRUCT ARTICULATED EXPANSION JOINT AT CONCRETE BIKE TRAIL PAVEMENT SEE DETAIL ON DWG. D-1
- 10 REMOVE AND DISPOSE OF EXISTING ASPHALT CONCRETE PAVEMENT
- 11 REMOVE AND DISPOSE OF EXISTING CONCRETE PAVEMENT
- 14 INSTALL CHAIN LINK FENCE SEE DETAIL ON DWG. D-5
- 23 INSTALL PIPEGATE PER SBC FCD STD. DRAWING SP-209 L=14.0'
- 24 EXTEND EXISTING FLOOD WALL BY 1.0' AND DOWEL PER DETAIL ON DWG. D-4
- 25 REMOVE AND SALVAGE BOLLARD

LEGEND:

- REMOVE CONCRETE
- REMOVE AC
- CONSTRUCT REINF. CONC. PAVEMENT

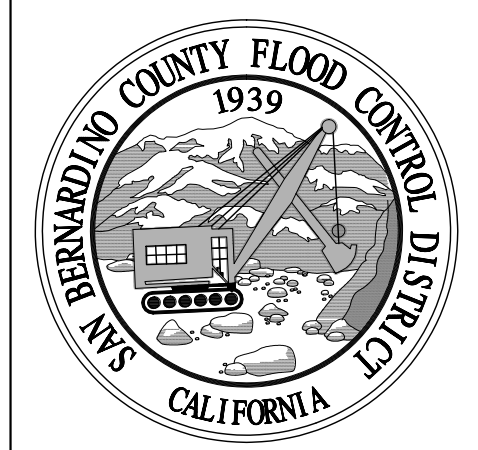
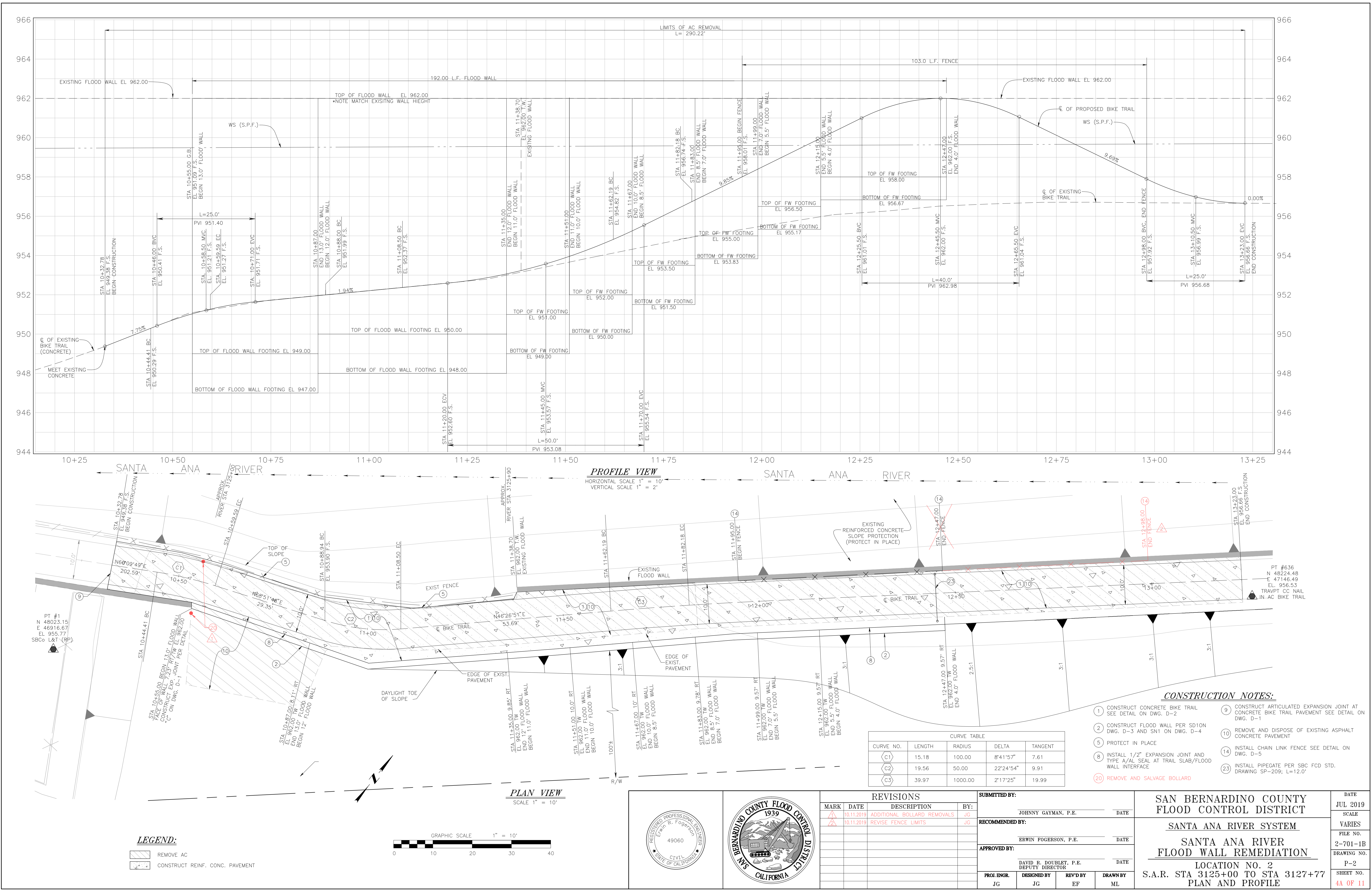


REVISIONS			
MARK	DATE	DESCRIPTION	BY:
1A	10.24.2019	ADDITIONAL BOLLARD REMOVALS	JG

SUBMITTED BY:			
JOHNNY GAYMAN, P.E.			
RECOMMENDED BY:			
ERWIN FOGERSON, P.E.			
APPROVED BY:			
DAVID R. DOUBLET, P.E. DEPUTY DIRECTOR			
PROJ. ENGR.	DESIGNED BY	REV'D BY	DRAWN BY
JG	JG	E.F.	ML

SAN BERNARDINO COUNTY FLOOD CONTROL DISTRICT		DATE JUL 2019
SANTA ANA RIVER SYSTEM		SCALE VARIES
SANTA ANA RIVER FLOOD WALL REMEDIATION		FILE NO. 2-701-1B
LOCATION 1 S.A.R. STA 3119+80		DRAWING NO. P-1
PLAN, PROFILE, AND SECTION		SHEET NO. 3A OF 11

S:\F02613 - Santa Ana River Floodwall Repair\Drawings\FINAL DESIGN\Santa Ana River Floodwall Repair- (Redesign). Oct 2018 with Revisions.pro



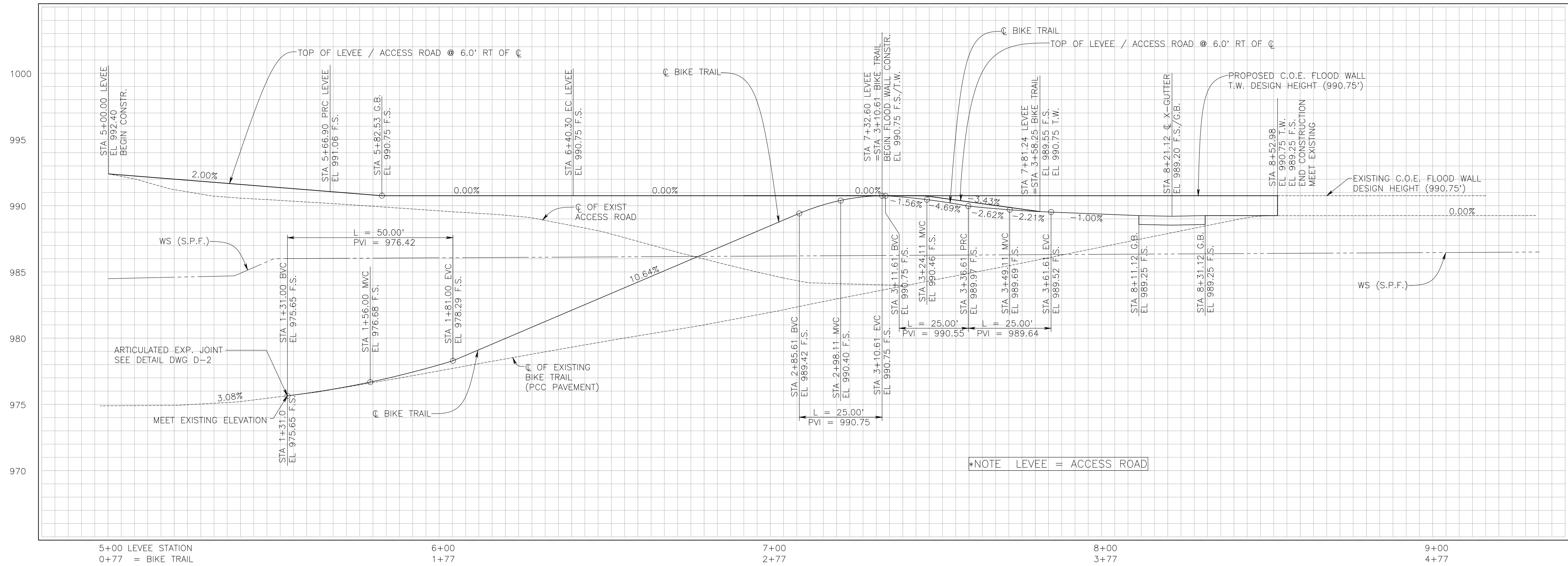
REVISIONS			
MARK	DATE	DESCRIPTION	BY:
1	10.11.2019	ADDITIONAL BOLLARD REMOVALS	JG
2	10.11.2019	REVISE FENCE LIMITS	JG

SUBMITTED BY:			
JOHNNY GAYMAN, P.E.			DATE
RECOMMENDED BY:			
ERWIN FOGERSON, P.E.			DATE
APPROVED BY:			
DAVID R. DOUBLET, P.E. DEPUTY DIRECTOR			DATE
PROJ. ENGR.	DESIGNED BY	REV'D BY	DRAWN BY
JG	JG	EF	ML

SAN BERNARDINO COUNTY FLOOD CONTROL DISTRICT		DATE JUL 2019
SANTA ANA RIVER SYSTEM		SCALE VARIES
SANTA ANA RIVER FLOOD WALL REMEDIATION		FILE NO. 2-701-1B
LOCATION NO. 2 S.A.R. STA 3125+00 TO STA 3127+77 PLAN AND PROFILE		DRAWING NO. P-2
		SHEET NO. 4A OF 11

REVISION OCT 11, 2019

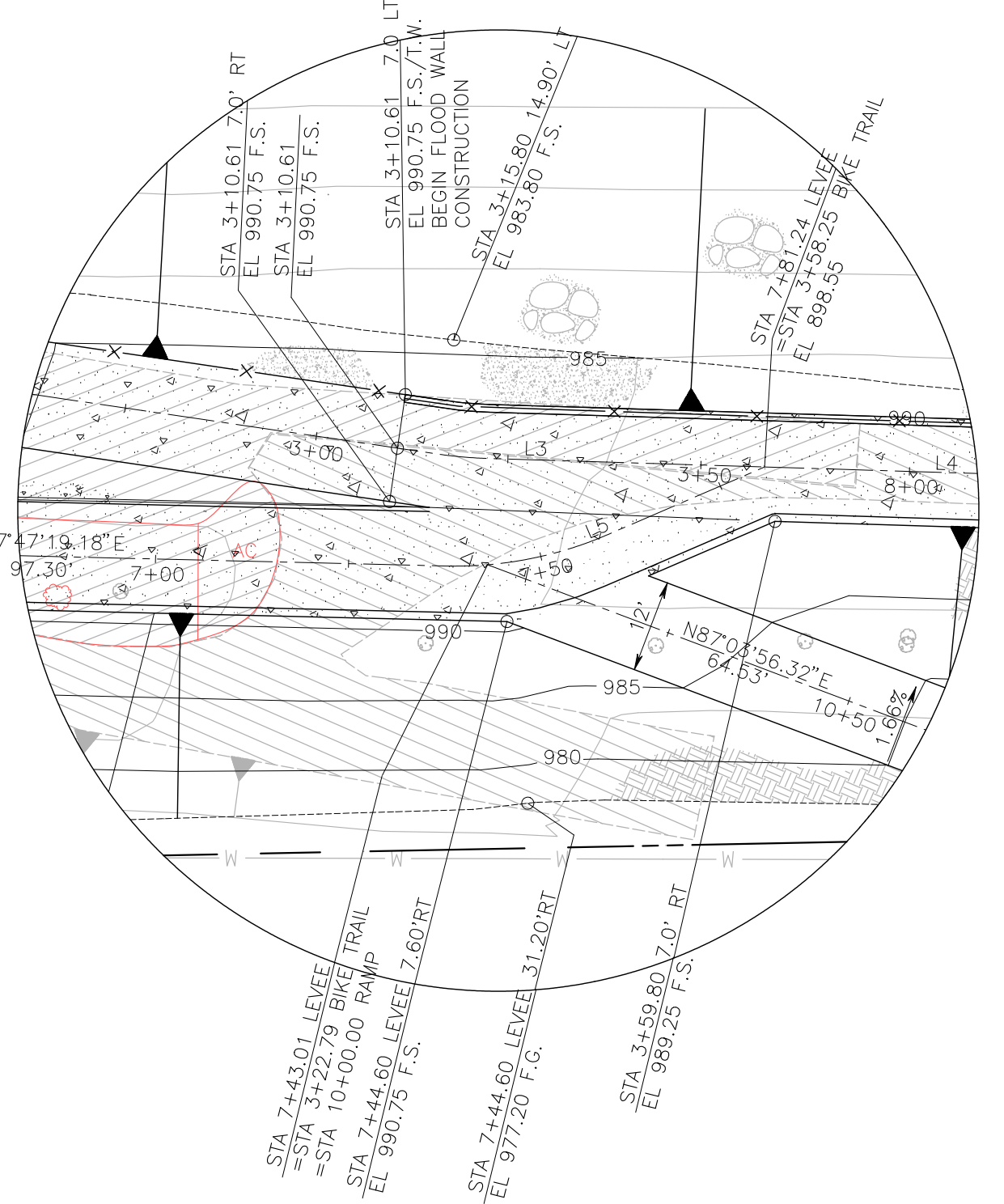
S:\F02613 - Santa Ana River Floodwall Repair\Active\FINAL DESIGN\Floodwall repair (NAD 27) - (Redesign)\Final with Revisions.dwg



PROFILE VIEW

HORIZONTAL SCALE 1"=20'

VERTICAL SCALE 1"=4'



CLOSE-UP PLAN VIEW

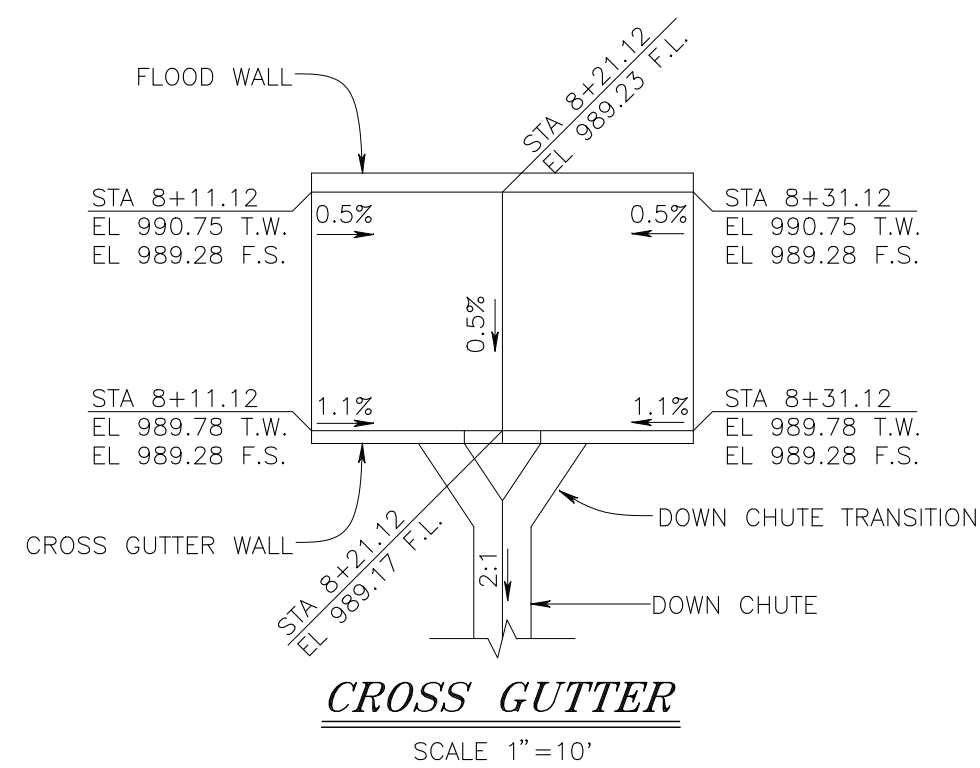
SCALE 1"=20'

CONSTRUCTION NOTES:

1. CONSTRUCT CONCRETE BIKE TRAIL SEE DETAIL ON DWG. D-2
2. REMOVE EXISTING CHAIN LINK FENCE /OR GATE.
3. PROTECT IN PLACE
4. REMOVE TREE
5. INSTALL 1/2" EXPANSION JOINT AND TYPE A/AL SEAL AT TRAIL SLAB/FLOOD WALL INTERFACE
6. CONSTRUCT ARTICULATED EXPANSION JOINT AT CONCRETE BIKE TRAIL PAVEMENT SEE DETAIL ON DWG. D-1
7. REMOVE AND DISPOSE OF EXISTING ASPHALT CONCRETE PAVEMENT
8. REMOVE AND DISPOSE OF EXISTING CONCRETE PAVEMENT
9. CONSTRUCT FLOOD WALL SEE DETAIL ON DWG D-2
10. CONSTRUCT REINFORCED CONCRETE SLOPE PROTECTION SEE DETAIL ON DWG. D-2
11. INSTALL CHAIN LINK FENCE SEE DETAIL ON DWG D-5
12. REMOVE AND DISPOSE EXISTING A.C. DIKE
13. CONSTRUCT DOWN CHUTE SEE DETAILS ON DWG D-2
14. CONSTRUCT CROSS GUTTER SEE DETAILS ON DWG D-2
15. RELOCATE PIPEGATE
16. REMOVE & SALVAGE BOLLARD
17. ADJUST GATE TO GRADE
18. CONSTRUCT 2' CUTOFF WALL PER CROSS GUTTER SECTION DETAIL ON DWG D-2

LEGEND:

- REMOVE CONC.
- REMOVE AC
- CONST. REINF. CONC. SLOPE PROTECTION AND TRAIL



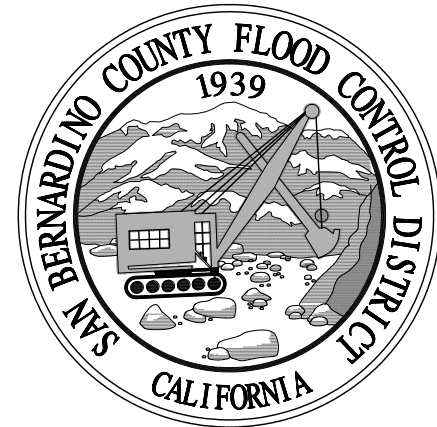
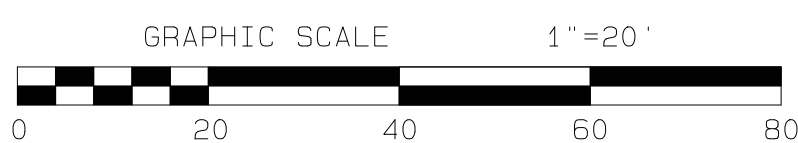
CROSS GUTTER

SCALE 1"=10'

LINE TABLE		
LINE	BEARING	DISTANCE
L1	N80°49'20.98"E	69.39'
L2	N74°47'14.22"E	104.13'
L3	N68°10'02.29"E	14.44'
L4	N68°10'02.29"E	71.74'
L5	N48°04'58.82"E	22.10'

PLAN VIEW

SCALE 1"=20'



REVISIONS			
MARK	DATE	DESCRIPTION	BY:
Δ	10.11.2019	ADDITIONAL BOLLARD REMOVALS	JG
Δ	10.11.2019	CLARIFY EXISTING CONDITION	JG

SUBMITTED BY:			
JOHNNY GAYMAN, P.E.			
DATE			
RECOMMENDED BY:			
ERWIN FOGERSON, P.E.			
DATE			
APPROVED BY:			
DAVID R. DOUBLET, P.E.			
DEPUTY DIRECTOR			
DATE			
PROJ. ENGR.	DESIGNED BY	REV'D BY	DRAWN BY
JG	JG/KM	EF	KM

SAN BERNARDINO COUNTY
FLOOD CONTROL DISTRICT

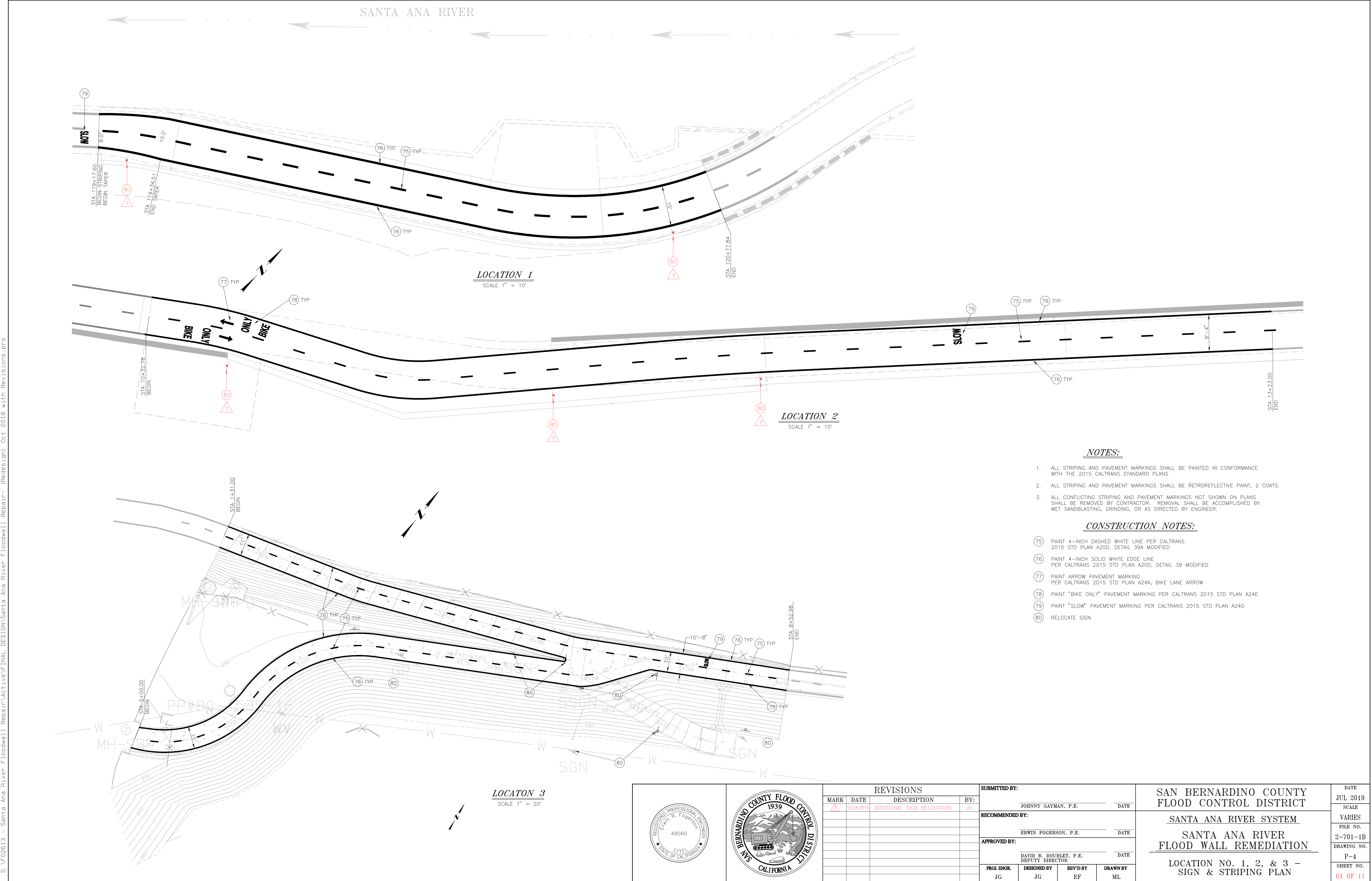
SANTA ANA RIVER SYSTEM
SANTA ANA RIVER
FLOOD WALL REMEDIATION

LOCATION NO. 3
S.A.R. STA 3161+50 TO STA 3170+00
PLAN, PROFILE, AND SECTION

DATE
JUL 2019
SCALE
VARIES
FILE NO.
2-701-1A
DRAWING NO.
P-3
SHEET NO.
5A OF 11

REVISION OCT 11, 2019

S:\F026\13 - Santa Ana River Floodwall Repair\Active\FINAL DESIGN\Santa Ana River Floodwall Repair- (Redesign). Oct 2018 with Revisions.pro





CONSTRUCTION NOTES:

4 REMOVE AND INSTALL WITH NEW FENCE; SEE DETAILS ON DWG D-5
BIKE TRAIL STA 1+31.00 TO STA 4+30.00

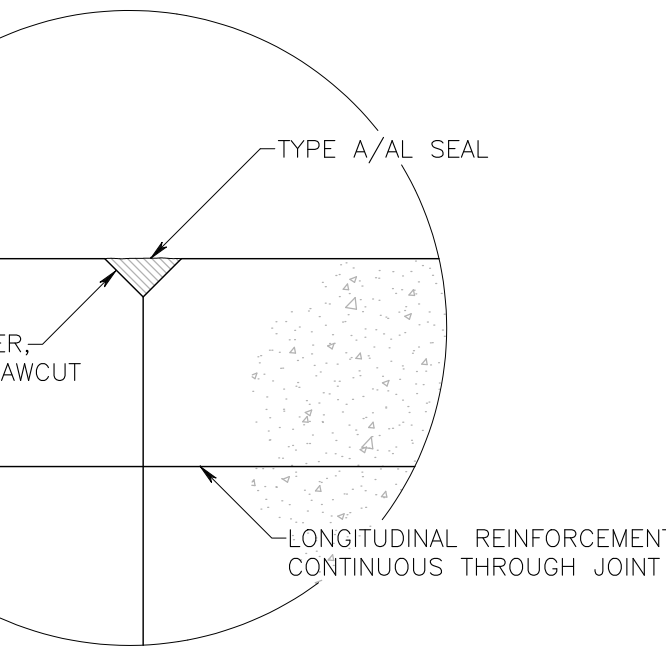


Diagram illustrating the repair of a wall joint. The joint is filled with 1/2" premolded expansion joint filler. The top of the wall is sealed with a Type A/al seal to 12" below the concrete pavement slab. The joint is chamfered to a 3/4" width. Reinforcement is not shown.

TYPE A/AL SEAL
(INTERIOR FACE, INVERT,
WALLS AND DECK)

SEE DETAIL "C"
ON THIS DRAWING

EXISTING CONCRETE
BIKE TRAIL

1 2

3/4"

12"

60"

1/2" DIA. SMOOTH SLIPDOWEL;
LEEVE, & EPOXY @ 18" O.C

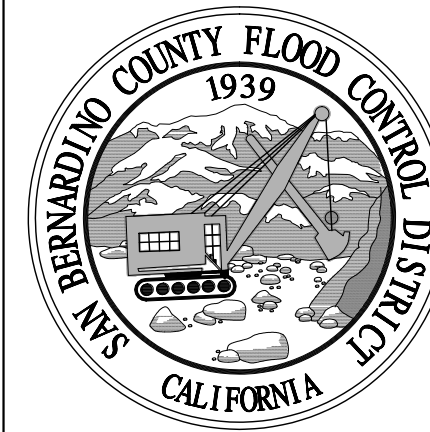
#5 BARS @ 12" O.C
BOTH WAYS

1/2" PREMOLD EXP. JOINT FILLER
PER DETAIL "C" ON THIS DWG.

CONTRACTION JOINT TYPE "B"
 (TYPICAL FOR WALLS)
 NOT TO SCALE

GRAPHIC SCALE $1'' = 2'$

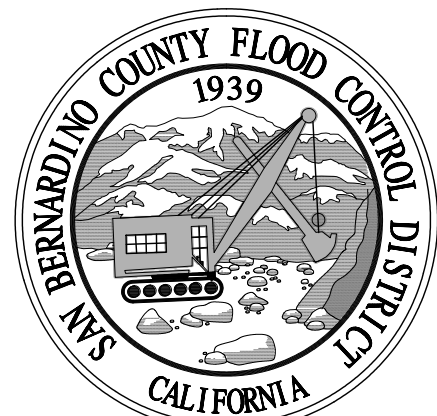
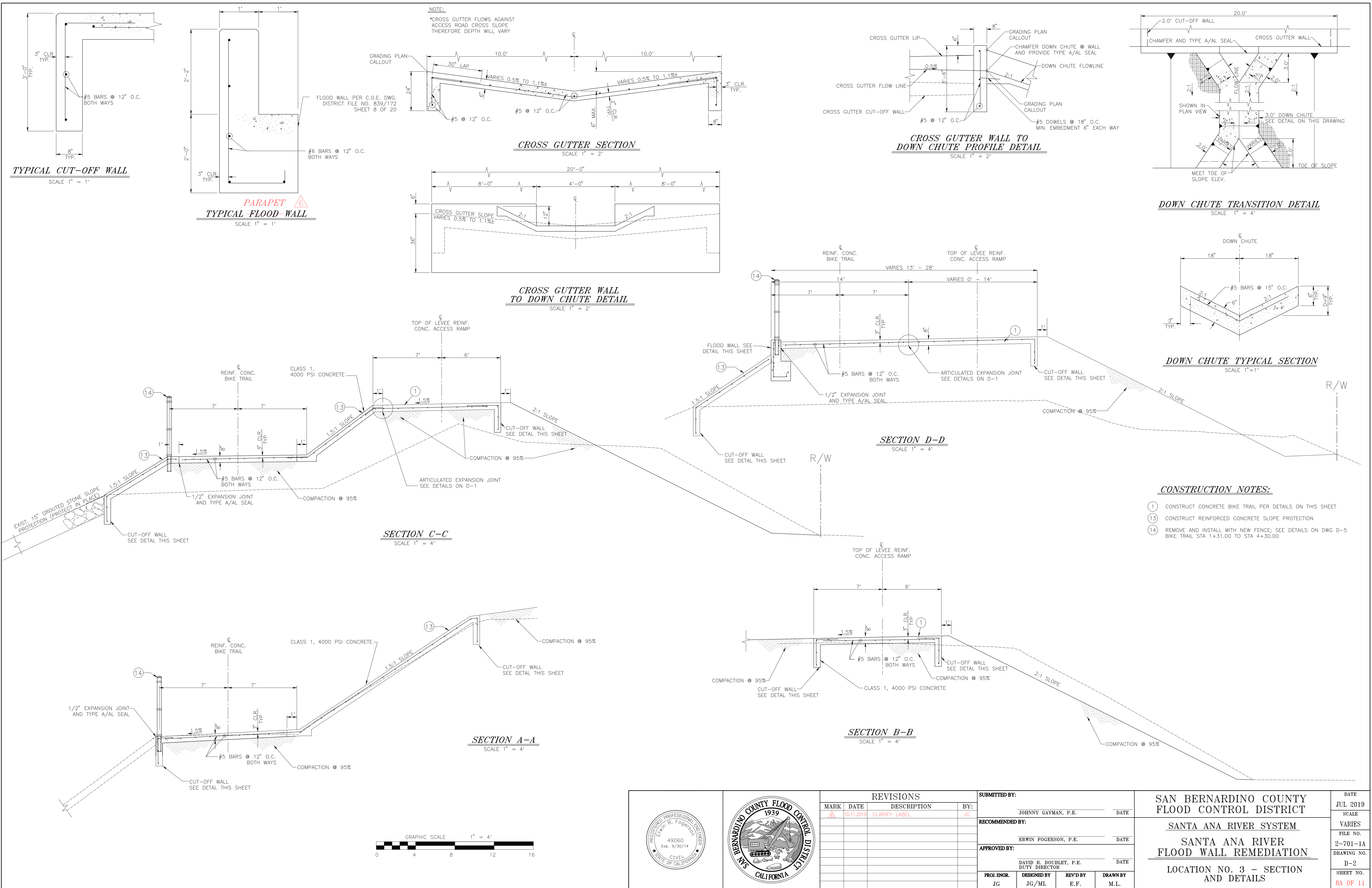
0 2 4 6 8



SUBMITTED BY:				
JOHNNY GAYMAN, P.E.				DATE
RECOMMENDED BY:				
ERWIN FOGERSON, P.E.				DATE
APPROVED BY:				
DAVID R. DOUBLET, P.E. DEPUTY DIRECTOR				DATE
PROJ. ENGR.	DESIGNED BY	REV'D BY	DRAWN BY	
JG	JG/ML	E.F.	ML	

DATE	JUL 2019
SCALE	VARIES
FILE NO.	2-701-1B
DRAWING NO.	D-1
SHEET NO.	7A OF 11

S:\F026\13 - Santa Ana River Floodwall Repair\FINAL DESIGN\Floodwall repair (MAD 27) - (Redesign) Final with Revisions.dwg



REVISIONS			
MARK	DATE	DESCRIPTION	BY:
1	10.11.2019	CLARIFY LABEL	JG

SUBMITTED BY:			
JOHNNY GAYMAN, P.E.			DATE
RECOMMENDED BY:			
ERWIN FOGERSON, P.E.			DATE
APPROVED BY:			
DAVID R. DOUBLET, P.E. DUTY DIRECTOR			DATE
PROJ. ENGR. JG	DESIGNED BY JG/ML	REV'D BY E.F.	DRAWN BY M.L.

SAN BERNARDINO COUNTY FLOOD CONTROL DISTRICT		DATE JUL 2019
SANTA ANA RIVER SYSTEM		SCALE VARIES
SANTA ANA RIVER FLOOD WALL REMEDIATION		FILE NO. 2-701-1A
LOCATION NO. 3 - SECTION AND DETAILS		DRAWING NO. D-2
		SHEET NO. 8A OF 11