

Dec 16, 2019 -- 7:25AM -- W:\SAN020200\ENGR\SHEETS\BAKER FUEL SITE LAYOUT PLAN\PL-BAKER_01 TITLE.DWG

GENERAL NOTES:

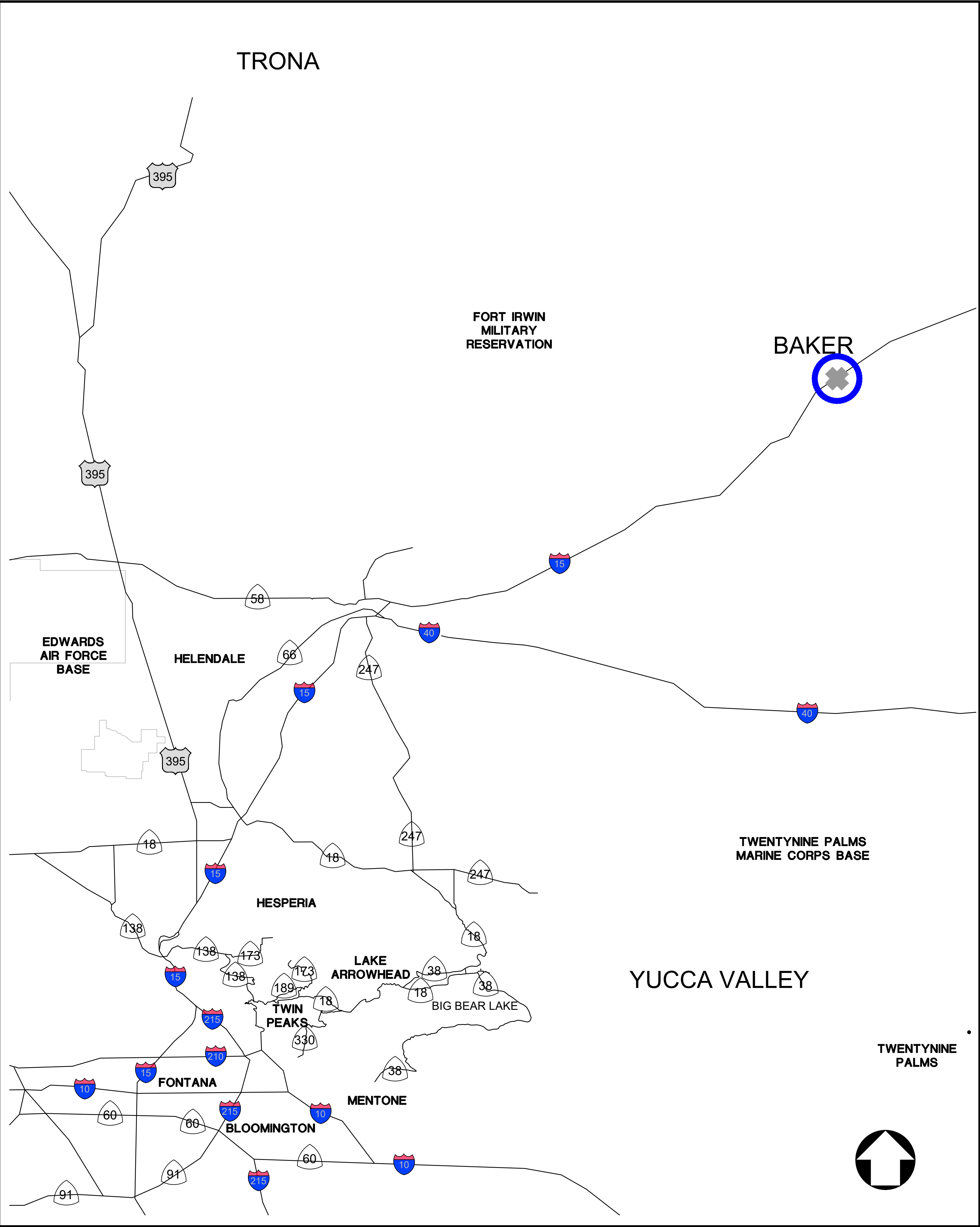
- ALL WORK SHALL BE IN ACCORDANCE WITH COUNTY OF SAN BERNARDINO MUNICIPAL CODE, THE STANDARD SPECIFICATIONS FOR PUBLIC WORKS CONSTRUCTION (GREEN BOOK) LATEST EDITION, AND ALL SUPPLEMENTS. THE PRELIMINARY SOILS REPORT DATED AND ANY SPECIAL REQUIREMENTS OF THE PERMIT.
- APPROVAL OF THIS PLAN DOES NOT CONSTITUTE A REPRESENTATION AS TO THE ACCURACY OF THE LOCATION OR OF THE EXISTENCE OR NON-EXISTENCE OF ANY UNDERGROUND UTILITY PIPE OR STRUCTURE WITHIN THE LIMITS OF THIS PROJECT. THE CONTRACTOR SHALL ASSUME FULL RESPONSIBILITY FOR THE PROTECTION OF ALL UTILITIES WITHIN THE LIMITS OF THIS PROJECT.
- DUST SHALL BE CONTROLLED BY WATERING.
- FINISH GRADING WILL BE COMPLETED AND APPROVED BEFORE PLACEMENT OF EQUIPMENT.
- PUBLIC STREETS SHALL BE KEPT CLEAN AND FREE FROM DIRT AND/OR DEBRIS. THE CONTRACTOR SHALL BE RESPONSIBLE FOR ALL COSTS INCURRED IN STREET CLEANING NECESSITATED BY HIS OPERATION.
- NO GRADING IN EXCESS OF 5,000 CY SHALL BE STARTED WITHOUT FIRST NOTIFYING THE ENGINEER. A PRE-GRADING MEETING AT THE SITE IS REQUIRED BEFORE THE START OF GRADING WITH THE FOLLOWING PEOPLE PRESENT: OWNER, GRADING CONTRACTOR, SUPERVISING CIVIL ENGINEER, SOILS ENGINEER AND/OR GEOLOGIST.
- NO FILL TO BE PLACED UNTIL STRIPPING OF VEGETATION, REMOVAL OF UNSUITABLE SOILS AND INSTALLATION OF SUB-DRAINS, IF ANY, HAS BEEN INSPECTED AND APPROVED BY THE SOILS ENGINEER.
- NO ROCK OR SIMILAR MATERIAL GREATER THAN 6" IN DIAMETER WILL BE PLACED IN THE FILL UNLESS RECOMMENDATIONS FOR SUCH PLACEMENT HAVING BEEN SUBMITTED BY THE SOILS ENGINEER.
- ALL EXISTING FILLS SHALL BE APPROVED BY THE SOILS ENGINEER OR REMOVED BEFORE ANY ADDITIONAL FILLS ARE ADDED.
- FILLS SHALL BE BENCHED IN COMPETENT MATERIAL AS REQUIRED IN SOILS REPORT.
- AREAS TO RECEIVE FILL SHALL BE PROPERLY PREPARED AND APPROVED BY THE SOILS ENGINEER PRIOR TO THE PLACING OF FILL.
- THE CONTRACTOR SHALL COMPLY WITH THE GRADING CODE REQUIREMENTS WHEN AN EXCESS OF 1,000 CY IS MOVED ON PUBLIC ROADWAYS FROM THE SITE OF AN EARTH GRADING OPERATION. (15.04-210, 5.04.545, 15.38)
- THE SOILS ENGINEER SHALL BE RESPONSIBLE FOR THE OBSERVATION AND APPROVAL CONCERNING THE PREPARATION OF GROUND TO RECEIVE FILLS, TESTING FOR REQUIRED COMPACTION, STABILITY OF ALL FINISH SLOPES AND THE DESIGN OF BUTTRESS FILLS, WHERE REQUIRED, INCORPORATING DATA SUPPLIED BY THE ENGINEERING GEOLOGIST AND INSURE COMPLIANCE WITH THE PLANS, SPECIFICATIONS, AND CODE WITHIN THEIR PURVIEW.
- THE DESIGN CIVIL ENGINEER SHALL EXERCISE SUFFICIENT SUPERVISORY CONTROL DURING GRADING AND CONSTRUCTION TO INSURE COMPLIANCE WITH THE PLANS, SPECIFICATIONS, AND CODE WITHIN HIS PURVIEW.
- SANITARY FACILITIES SHALL BE MAINTAINED ON THE SITE.
- THE LOCATION AND PROTECTION OF ALL UTILITIES IS THE RESPONSIBILITY OF THE CONTRACTOR.
- EXPORT SOIL MUST BE TRANSPORTED TO A LEGAL DUMP SITE.
- IN THE EVENT THAT SOIL CONTAMINATION IS DISCOVERED DURING EXCAVATION, WORK SHALL BE STOPPED UNTIL A SITE ASSESSMENT AND MITIGATION PLAN HAS BEEN PREPARED, SUBMITTED AND APPROVED BY HCA/ENVIRONMENTAL HEALTH.
- THE CONTRACTOR SHALL KEEP EACH EXISTING FUEL SERVICE SITE IN OPERATION AS LONG AS POSSIBLE. GOAL IS 2-3 WORKING DAYS, PER SITE.
- PROPOSED PAVEMENT TO BE PLACED TO MATCH EXISTING SURFACE FLOW DRAINAGE PATTERN.
(AC/AB AT 1.5% MIN.)
(PCC AT 0.5% MIN.)
- PLACE ELECTRICAL CONDUITS IN SLAB AT TANK LOCATIONS.
- INSTALLATION CONFIGURATION TO MATCH EXISTING BALDY MESA FUEL SITE (LOCATED AT 12394 SYCAMORE ST. VICTORVILLE, CA 92392)
- ALL NEW TANKS TO BE CONNECTED TO EMERGENCY GENERATOR

UNAUTHORIZED CHANGES AND USES

CAUTION:
THE ENGINEER PREPARING THESE PLANS WILL NOT BE RESPONSIBLE FOR UNAUTHORIZED CHANGES TO OR USE OF THESE PLANS. ALL CHANGES TO THE PLANS MUST BE IN WRITING AND MUST BE APPROVED BY THE PREPARER OF THESE PLANS.

LIABILITY FOR UNDERGROUND STRUCTURES

ALL UNDERGROUND UTILITIES SHOWN ON THE PLANS WERE OBTAINED FROM A REVIEW OF AVAILABLE RECORD DATA, WHILE DUE CARE WAS TAKEN IN PREPARATION OF THIS INFORMATION, THE ENGINEER CANNOT AND DOES NOT GUARANTEE THE ACCURACY OR COMPLETENESS OF THE INFORMATION.
IT SHALL BE THE RESPONSIBILITY AND LIABILITY OF THE CONTRACTOR TO DETERMINE THE EXISTENCE OR NON-EXISTENCE OF SUCH UTILITIES AND TO PROTECT THEM IN PLACE.
IN THE EVENT UNKNOWN UTILITIES OR UNKNOWN STRUCTURES ARE FOUND, OR KNOWN FACILITIES ARE FOUND DURING CONSTRUCTION AT UNEXPECTED ELEVATIONS OR LOCATIONS, THE ENGINEER IS TO BE NOTIFIED OF SUCH CONDITIONS AT ONCE. THE ENGINEER WILL MAKE ANY REQUIRED DESIGN CHANGES AND THE CONTRACTOR AGREES TO COMPLETE THE WORK INCLUDING REPAIRS REQUIRED IN AN EXPEDITIOUS MANNER.
THE CONTRACTOR AGREES THAT HE SHALL ASSUME SOLE AND COMPLETE RESPONSIBILITY FOR JOB SITE CONDITIONS DURING THE COURSE OF CONSTRUCTION OF THIS PROJECT INCLUDING SAFETY OF ALL PERSONS AND PROPERTY. THAT THIS REQUIREMENT SHALL APPLY CONTINUOUSLY AND NOT BE LIMITED TO NORMAL WORKING HOURS.
PSOMAS IS NOT RESPONSIBLE FOR ANY INFORMATION SHOWN ON THIS DRAWING PROVIDED BY OTHERS.



LEGEND



EXISTING FUEL SITE

SHEET INDEX:

SHT. NO.	DWG. NO.	SHEET	SITE NO.	REGION	SITE	CITY
01	0.10	TITLE SHEET				
02	0.20	CONSTRUCTION NOTE MATRIX				
03	1.10	PRECISE GRADING PLAN		BAKER	Baker Blvd.	Baker
04	2.10	TANK LAYOUTS				
05	2.11	TANK DETAILS				
06	2.12	TANK DETAILS				
07	2.13	TANK LAYOUT DETAILS				
08	2.14	SITE DETAILS				
09	E0.01	ELECTRICAL COVER SHEET				
10	E1.00	SITE LAYOUT PLAN		BAKER	Baker Blvd.	Baker
11	E1.01	ELECTRICAL DETAILS				

NOTICE TO CONTRACTOR FOR COUNTY PERMITS:

COUNTY PERMIT

- AN ENCROACHMENT PERMIT FROM THE COUNTY OF SAN BERNARDINO WILL BE REQUIRED FOR WORK IN COUNTY RIGHT-OF-WAY.
- CONTRACTOR SHALL PAY ANY FEES.
- COUNTY SHALL BE LISTED AS CO-APPLICANT. CONTRACTOR SHALL SUBMIT OF PROOF OF INSURANCE, AND PAYMENT OF PERMIT FEE.
- CONTRACTOR SHALL BE RESPONSIBLE FOR MAINTAINING ENCROACHMENT PERMIT IN FORCE, TRACKING EXPIRATION DATES, AND APPLYING FOR PERMIT RENEWALS AND EXTENSIONS AS NEEDED.

COUNTY OF SAN BERNARDINO FIRE DEPARTMENT PERMIT

- A PERMIT FROM COUNTY OF SAN BERNARDINO FIRE DEPARTMENT WILL BE REQUIRED FOR WORK RELATED TO THE INSTALLATION OF FUEL TANKS
- CONTRACTOR SHALL PAY ANY FEES.
- COUNTY SHALL BE LISTED AS CO-APPLICANT. CONTRACTOR SHALL SUBMIT OF PROOF OF INSURANCE, AND PAYMENT OF PERMIT FEE.
- CONTRACTOR SHALL BE RESPONSIBLE FOR MAINTAINING PERMIT IN FORCE, TRACKING EXPIRATION DATES, AND APPLYING FOR PERMIT RENEWALS AND EXTENSIONS AS NEEDED.

DEMOLITION / STAGING OF EXISTING TANKS / NOTES:

AFTER NEW WORK IS COMPLETED AND ACCEPTED:

- COUNTY WILL EMPTY FUEL TANKS.
- CONTRACTOR WILL REMOVE/RELOCATE FUEL TANKS TO AN UNUSED AREA ON PROPERTY.
- CONTRACTOR WILL REMOVE FUEL PADS AND REPAIR PAVEMENT AND PATCH TO MATCH EXISTING SITE CONDITIONS.
- COUNTY WILL CLEAN AND SCRAP EMPTY FUEL TANKS.



COUNTY OF
SAN BERNARDINO

ARCHITECTURE &
ENGINEERING DEPARTMENT

385 NORTH ARROWHEAD AVENUE
SAN BERNARDINO, CA 92415-0184

Project Title:

BAKER FUEL SITE

CIP NUMBER:

Project No:

2SAN020200

Project Address:

Fire Station 53
72734 Baker Blvd. Baker CA 92309

PSOMAS

3 Hutton Centre Drive
Suite 200
Santa Ana, CA 92707
(714) 751-7373 Fax(714) 545-8883



No.	REVISION	DATE

Drawing Title:

PRECISE GRADING PLAN

TITLE SHEET
INDEX MAP, NOTES

Revision Date:	
Scale:	
Drawn By:	MS
Reviewed By:	HN
Date:	12/18/19
Drawing Size:	24 x 36

Drawing Number

0.10

01 of 11 Sheets

100% CONSTRUCTION DOCUMENTS

Dec 16, 2019 -- 7:25AM -- N:\25AN020200\ENGR\3SHEET\3\BAKER_FUEL_SITE_LAYOUT_PLAN\PL-BAKER_02_CN_MATRIX.DWG



COUNTY OF
SAN BERNARDINO

ARCHITECTURE &
ENGINEERING DEPARTMENT

385 NORTH ARROWHEAD AVENUE
SAN BERNARDINO, CA 92415-0184

Project Title:
BAKER FUEL SITE

CIP NUMBER:

Project No:
2SAN020200

Project Address:
Fire Station 53
72734 Baker Blvd. Baker CA 92309

P S O M A S

3 Hutton Centre Drive
Suite 200
Santa Ana, CA 92707
(714) 751-7373 Fax(714) 545-8883



NOTE	CONSTRUCTION ITEM:	QUANTITY	UNIT
①	PROTECT IN PLACE (ITEMS NOTED)	1	LS
②	INSTALL FUEL TANK PER DETAIL 2 ON SHT 5	2	EA
2B	INSTALL TANK ACCESSORIES PER DETAIL 2B ON SHT 5	2	LS
2C	INSTALL RUNG LADDER AND 3'X 18'PLATFORM THAT EXTENDS TO BOTH ENDS OF EACH FUEL TANK --GALVANIZED. SEE DETAIL 2C ON SHT 5	1	EA
2D	INSTALL TANK PUMP (FILL-RITE) PER DETAIL 2D ON SHT 6	2	EA
2E	INSTALL 2" TANK VALVE (MORRISON) PER DETAIL 2E ON SHT 6	2	EA
③	INSTALL FUEL TANKS LAYOUT PER DETAIL 3 ON SHT. 4	1	EA
④	INSTALL RELIANCE S1 DISPENSER PER DETAIL 4 ON SHT. 5	2	EA
⑤	CONSTRUCT 10" PCC CONCRETE PAVEMENT PER DETAIL 5 ON SHT. 7	928	SF
⑥	CONSTRUCTION 6" CONTAINMENT CURB (TYPE A1-6) PER APWA STD. PLAN 120-2. SEE DETAIL 6 ON SHT. 7	126	LF
⑦	INSTALL BOLLARD PER DETAIL 7 ON SHT. 7	11	EA
⑧	NOT USED	-	-
⑨	NOT USED	-	-
⑩	CONSTRUCT 30--FEET WIDE DRIVEWAY APPROACH PER SAN BERNARDINO COUNTY STD. DWG. 129A AND DETAIL 10 ON SHT. 8	378	SF
⑪	INSTALL SLIDING GATE LAYOUT PER DETAIL 11 ON SHT. 8	2	EA
⑫	INSTALL SENSOR LOOP FOR GATE EXIT AREAS TO BE PROVIDED BY CONTRACTOR. SEE GATE DETAIL 12 ON SHT. 8	2	EA
⑬	INSTALL WIRING AND CONDUIT FOR CARD READER BY CONTRACTOR. CARD READER AND PEDESTAL TO BE PROVIDED BY OWNER. SEE GATE DETAIL 13 ON SHT. 8	2	EA
⑭	INSTALL CHAIN LINK FENCE PER DETAIL 14 ON SHT. 8	181	LF
⑮	INSTALL ACCESS GATE -- CHAIN LINK PER DETAIL 15 ON SHT. 8	1	EA
⑯	INSTALL FILTRATION BASIN USING 3/4" GRAVEL WITH GEOFABRIC PER DETAIL 16 ON SHT. 7	1	EA
⑰	INSTALL 4" PVC STORM DRAIN PIPE (MINIMUM SLOPE OF 0.5%), REMOVE CONFLICTING EXISTING STORM DRAIN PIPE.	78	LF
⑱	CONSTRUCT REDWOOD HEADER	390	LF

No.	REVISION	DATE

Drawing Title:
PRECISE GRADING PLAN

CONSTRUCTION NOTES
MATRIX

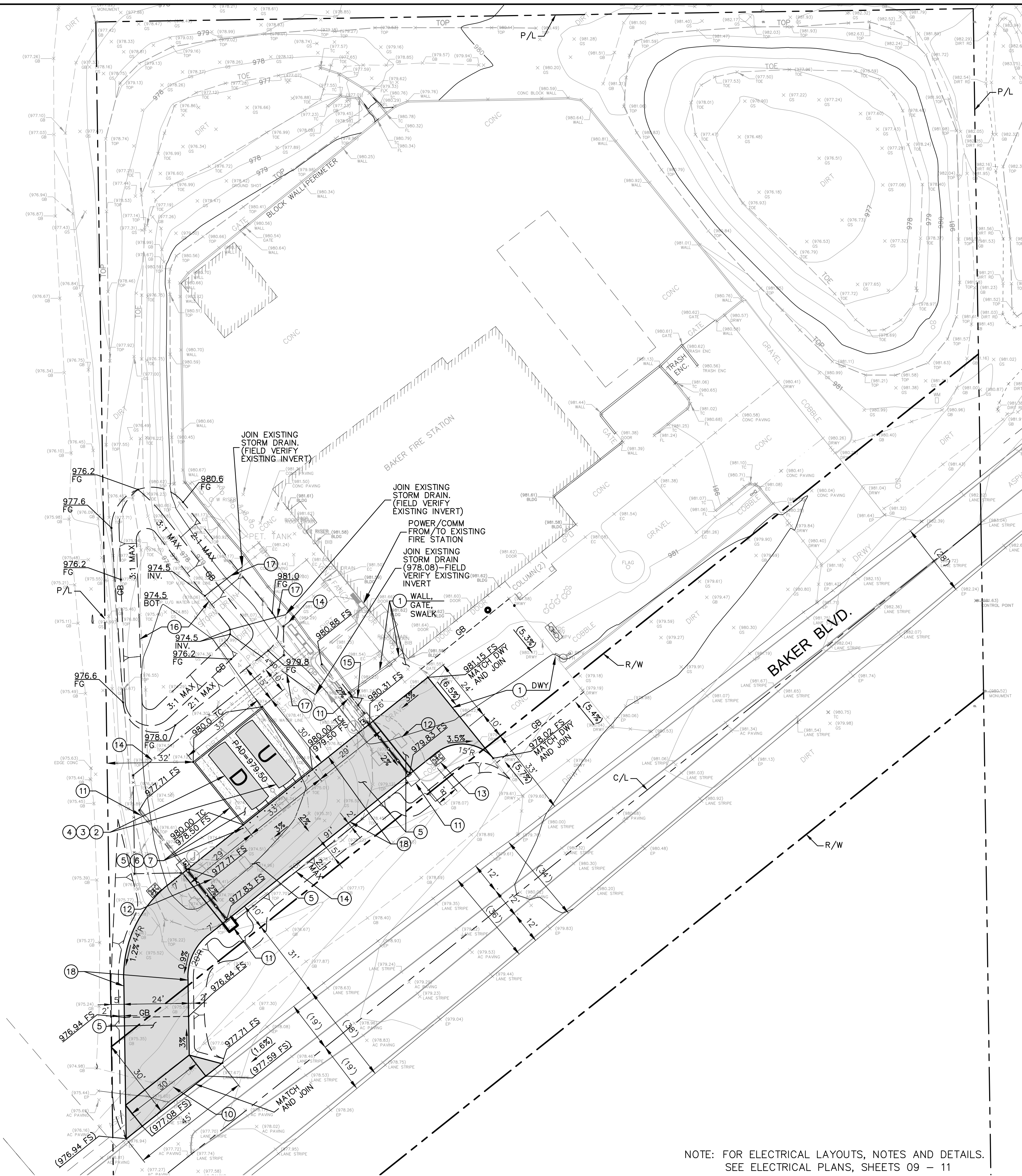
Revision Date:	
Scale:	
Drawn By:	MS
Reviewd By:	HN
Date:	12/18/19
Drawing Size:	24 x 36

Drawing Number

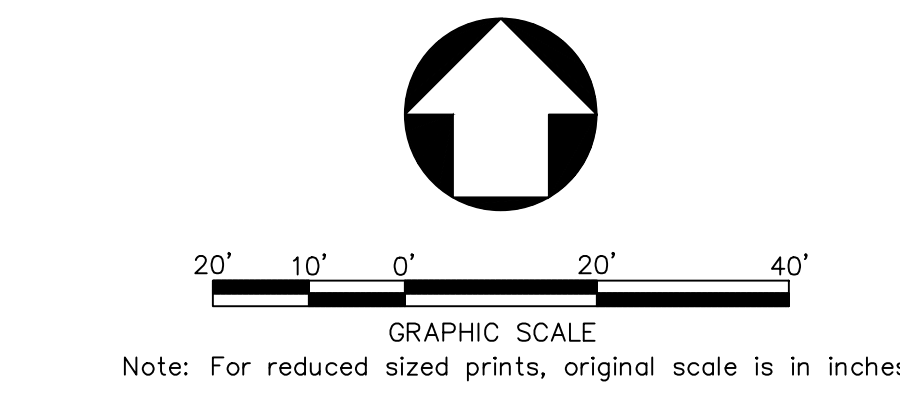
0.20
02 of 11 Sheets

CONSTRUCTION NOTES MATRIX

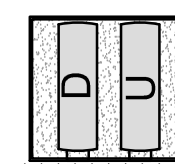
NOTE: THIS IS BEING BID AS LUMP SUMP SO UNIT QUANTITIES ARE PROVIDED FOR REFERENCE ONLY.



NOTE: FOR ELECTRICAL LAYOUTS, NOTES AND DETAILS.
SEE ELECTRICAL PLANS, SHEETS 09 - 11



LEGEND



LAYOUT "A"
PROPOSED FUEL TANKS / DISPENSERS LAYOUT
D = DIESEL GASOLINE
U = UNLEADED GASOLINE

GENERAL NOTES

- ADD CONDUIT FOR FUEL CONTROLLER AT DISTRIBUTION LOCATION.
- CONTRACTOR TO RE-USE / EXTEND EXISTING POWER.
- CONTRACTOR TO PROVIDE CONDUIT FOR DATA LINE AT EACH LOCATION.
- REMOVAL AND DISPOSAL OF EXISTING TANKS BY OTHERS.
- FLEET TO REMOVE PRODUCT FROM EXISTING FUEL TANKS.
- PUMPS AND DISPENSERS TO BE RETURNED TO FLEET.
- LOCATION OF EXISTING FUEL TANK AND NEW FUEL TANKS AS INDICATED.
- CONNECT TO POWER SOURCE PER ELECTRICAL ENGINEER.

CONSTRUCTION NOTES

- PROTECT IN PLACE (ITEMS NOTED)
- INSTALL FUEL TANK PER DETAILS 2, 2B & 2C ON SHT. 5 AND DETAILS 2D & 2E ON SHT. 6
- INSTALL FUEL TANKS LAYOUT PER DETAIL 3 ON SHT. 4
- INSTALL RELIANCE S1 DISPENSER PER DETAIL 4 ON SHT. 5
- CONSTRUCT 10" PCC CONCRETE PAVEMENT PER DETAIL 5 ON SHT. 7
- CONSTRUCTION 6" CONTAINMENT CURB (TYPE A1-6) PER APWA STD. PLAN 120-2. SEE DETAIL 6 ON SHT. 7
- INSTALL BOLLARD PER DETAIL 7 ON SHT. 7
- NOT USED
- NOT USED
- CONSTRUCT 30-FOOT WIDE DRIVEWAY APPROACH PER SAN BERNARDINO COUNTY STD. DWG. 129A AND DETAIL 10 ON SHT. 8
- INSTALL SLIDING GATE LAYOUT PER DETAIL 11 ON SHT. 8
- INSTALL SENSOR LOOP FOR GATE EXIT AREAS TO BE PROVIDED BY CONTRACTOR. SEE GATE DETAIL 12 ON SHT. 8
- INSTALL WIRING AND CONDUIT FOR CARD READER BY CONTRACTOR. CARD READER AND PEDESTAL TO BE PROVIDED BY OWNER. SEE GATE DETAIL 13 ON SHT. 8
- INSTALL CHAIN LINK FENCE PER DETAIL 14 ON SHT. 8
- INSTALL ACCESS GATE - CHAIN LINK PER DETAIL 15 ON SHT. 8
- INSTALL FILTRATION BASIN USING 3/4" GRAVEL WITH GEOFABRIC PER DETAIL 16 ON SHT. 7
- INSTALL 4" PVC STORM DRAIN PIPE (MINIMUM SLOPE OF 0.5%). REMOVE CONFLICTING EXISTING STORM DRAIN PIPE.
- CONSTRUCT REDWOOD HEADER



COUNTY OF SAN BERNARDINO

ARCHITECTURE &
ENGINEERING DEPARTMENT

385 NORTH ARROWHEAD AVENUE
SAN BERNARDINO, CA 92415-0184

Project Title:
BAKER FUEL SITE

CIP NUMBER:

Project No:
2SAN020200

Project Address:
Fire Station 53
72734 Baker Blvd. Baker CA 92309

P S O M A S

3 Hutton Centre Drive
Suite 200
Santa Ana, CA 92707
(714) 751-7373 Fax(714) 545-8883



No.	REVISION	DATE

Drawing Title:
PRECISE GRADING PLAN

PRECISE GRADING PLAN

Revision Date:	
Scale:	1" = 20'
Drawn By:	MS
Reviewed By:	HN
Date:	12/18/19
Drawing Size:	24 x 36
Drawing Number	

1.10
03 of 11 Sheets

Dec 18, 2019 -- 7:09AM -- M:\SAN020200\ENGR SHEETS\BAKER FUEL SITE LAYOUT PLAN\PL-BAKER_04-08 DET.DWG



COUNTY OF
SAN BERNARDINO

ARCHITECTURE &
ENGINEERING DEPARTMENT

385 NORTH ARROWHEAD AVENUE
SAN BERNARDINO, CA 92415-0184

Project Title:
BAKER FUEL SITE

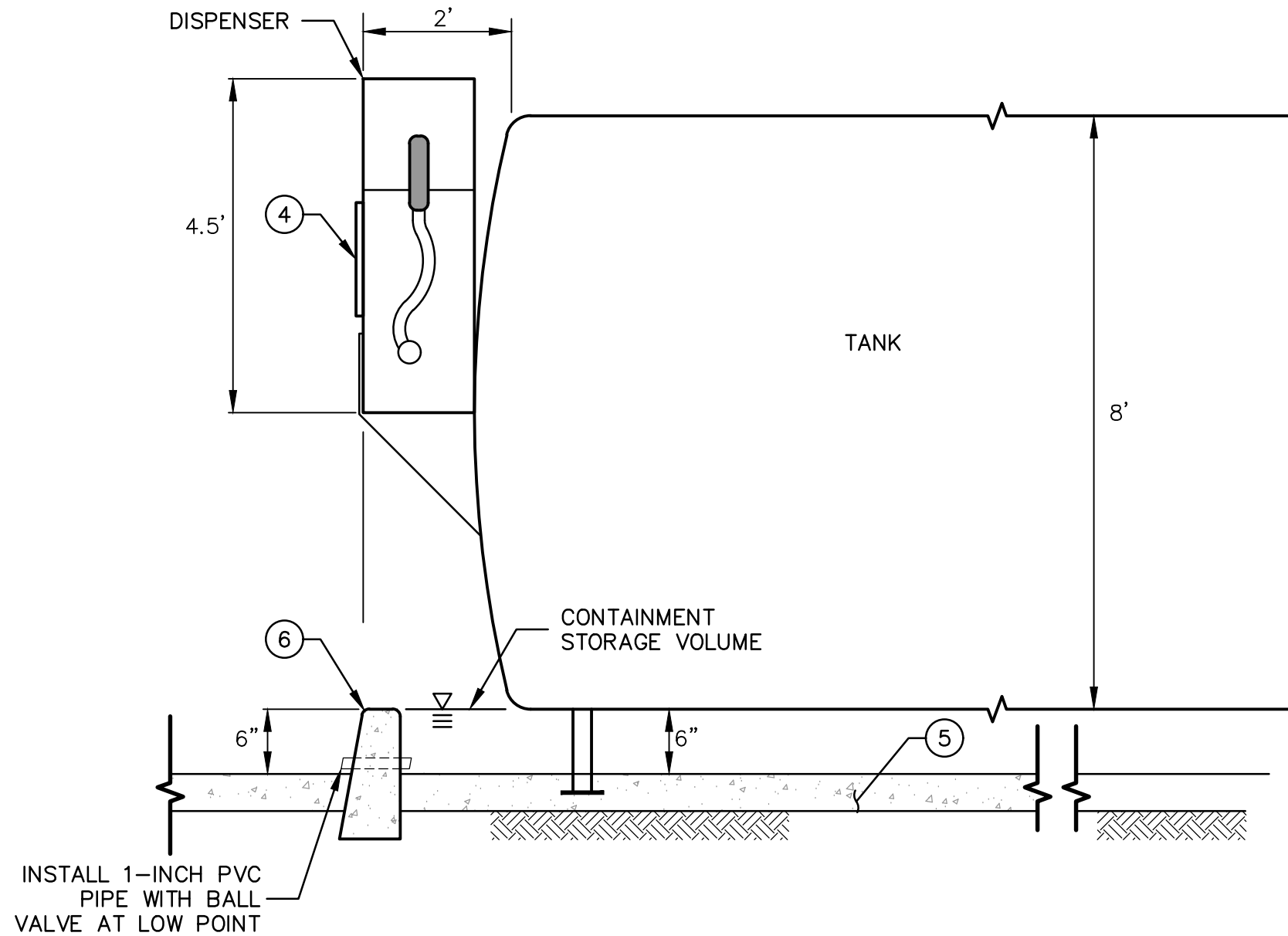
CIP NUMBER:

Project No:
2SAN020200

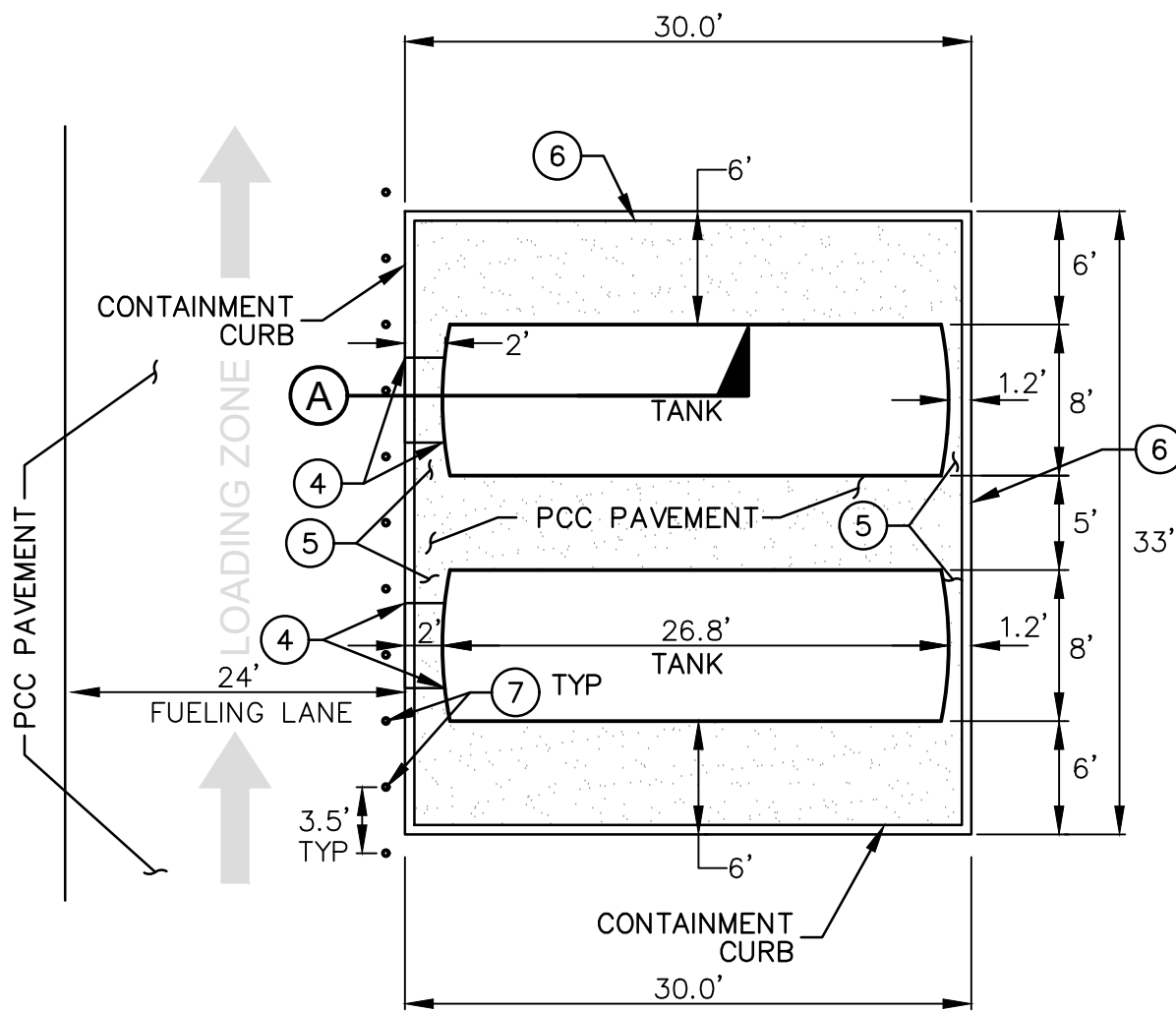
Project Address:
Fire Station 53
72734 Baker Blvd. Baker CA 92309

P S O M A S

3 Hutton Centre Drive
Suite 200
Santa Ana, CA 92707
(714) 751-7373 Fax(714) 545-8883



SECTION **A**
SCALE: 1"=2'



NOTES:
DOUBLE WALLED TANK WILL SATISFY SECONDARY CONTAINMENT REQUIREMENTS.
THE TRINARY CONTAINMENT CURB ONLY ADDRESS THE RAINFALL STORAGE.

- CONSTRUCTION NOTES**
- 4 INSTALL RELIANCE S1 DISPENSER PER DETAIL 4 ON SHT. 5
 - 5 CONSTRUCT 10" PCC CONCRETE PAD PER DETAIL 5 ON SHT. 7
 - 6 CONSTRUCTION 6" CONTAINMENT CURB (TYPE A1-6) PER APWA STD. PLAN 120-2. SEE DETAIL 6 ON SHT. 7
 - 7 INSTALL BOLLARD PER DETAIL 7 ON SHT. 7

3 TYPICAL FUEL TANKS LAYOUT - SINGLE SIDE
SCALE: 1"=10'

No.	REVISION	DATE

Drawing Title:
PRECISE GRADING PLAN

TANK LAYOUTS
SECTION

Revision Date:	
Scale:	
Drawn By:	MS
Reviewd By:	HN
Date:	12/18/19
Drawing Size:	24 x 36

Drawing Number

2.10
04 of 11 Sheets



- The Reliance S1 AST combines space-saving design with full-featured performance
- Compact size is ideal for AST shelf-attached applications and other special situations like marinas
 - Accurately records fuel usage with a weights and measures sealable meter
 - Available in an E85 compatible model for an easy transition to alternative fueling



Specifications

Model Number: Prefix / G6101D / Suffix 1 Options / Suffix 2 Options (e.g. / G6101D / 2JK / W1)

Standard model includes the following options as standard: 1" piping [2], J-box [J], hose hanger [K], solenoid valve [W1], Option prefix or suffixes are noted in the options below in [], A "1" (e.g. [W1]) indicates a suffix 2 option.

Performance: Up to 22 GPM (83 lpm).

Compatibility: For dispensing low viscosity petroleum fuels - diesel, biodiesel blends up to 20%; gasoline, including oxygenated blends; kerosene; AvGas, and jet fuel. See E85 option. Fuel must meet the applicable ASTM standard.

Note: Conform with fuel supplier on any fluid path metal restrictions before use. If aluminum, zinc, or red metals are not desired, the E85 option may be utilized.

Register: Non-computer mechanical register with power reset with interlock. Up to 999.9 gallons per delivery. Non-resettable accumulative totalizer up to 999999.9. Optional liters measure.

Meter: Reliable micro-accurate 2-piston positive displacement design. Weights & Measures sealable.

Solenoid Valve [W1]: 1" (2.5 cm) two-stage valve. Single stage valve with E85 option.

Electrical: 115VAC, 60 Hz. Optional 230VAC 50/60 Hz operation [Z].

Inlet Connection: 1 1/2" (3.8 cm) NPT. Bottom access hole sized for 1 1/2" emergency valve installation.

Discharge: 1" (2.5 cm) with 3/4" reducing bushing.

Mounting: Four 7/16" (1.1 cm) mounting holes in bottom. Optional shelf-mount kit.

Cabinet Construction: All panels are fabricated from galvanized steel for corrosion resistance. Front door includes lock and is removable for service. Outer sides, back, and top are removable for additional service access if required.

Cabinet Finish: Extremely durable powder-coated finish gives outstanding appearance and toughness. Metallic silver sides, top, and back. Blue door with black register decal. Optional black, brown, green, red, silver, yellow, or white doors.

Nozzle Boot and Hook: Fits standard UL interchangeable nozzles. Also fits Enno Winston 4015 and Husky V short spout balance vapor recovery nozzles. Hook extension kits- for QPW 11VF (p/n 892081-001) and Healy 400 (p/n 892080-001) long spout vapor recovery nozzles. Lift-to-start nozzle hook.

Hose Hanger [K]: Keeps hose off ground when not in use.

Actual Dimensions: 30.25"H x 16.75"W x 14"D (76.8cm H x 42.5cm W x 35.8cm D)

Pressure: Working pressure up to 50 psi.

Approvals: C-UL-US Listed. Sealable by U.S. Weights & Measures.

Options

Shelf-Mount Kit: Carbon steel shelf brackets for mounting dispenser to tank. Black powder coat finish. P/n 891839-001.

Pulsers: 10:1 [7A] and 100:1 [7B] ratio options.

E85" [E/ prefix]: Utilizes nickel-plating, hard anodizing, stainless steel, and special elastomers, which have been used successfully for E85 compatibility.

Hose Mast [JAJ]: Release hose to ease hose handling. Optional hose clamp kit- (p/n 890999-001) for Goodyear® vapor recovery hose.

External Filter Kit-: Installs on discharge. P/n 899921-002.

Stainless Steel: All exterior panels [J/S], all panels except painted galvanized steel doors [J/S1], or stainless steel doors only [J/S2].

Other Options: Liter measure [8] and 230VAC 50/60 Hz operation [Z].

Rear View Shown

V/R register with power reset (10:1 or 100:1 pulser option)

Removable service panels facilitate service

J-box for AC & pulser terminations

1" two-stage solenoid valve

Weights & Measures sealable 2-piston meter

Vertical strainer with 1 1/2" dispenser inlet

5" clearance hole for mounting 1 1/2" shear valve

*Note: Kits require field installation.

*Flow rates are maximum test rates at discharge. Actual rates will depend upon installation conditions, dispenser accessories and the size of the submersible or suction pump.

*E-models are UL listed for Class I liquids, which include gasoline and diesel. A UL listing specific to a new UL guideline for ethanol is pending. Select only hose and nozzle accessories that are expressly compatible with the fuel type being dispensed.



STANDARD TANK TOP PLATFORM AND LADDER



CUSTOM LADDER, PLATFORMS AND STAIRS

FUEL TECH CAN FABRICATE OSHA COMPLIANT LADDER AND CATWALK SYSTEMS IN MANY CUSTOMIZABLE CONFIGURATIONS. FROM STANDARD TANK-TOP PLATFORM AND LADDERS, TO COMPLETE FUEL FARM CATWALK SYSTEMS, FUEL TECH HAS THE EXPERTISE TO MAKE TANK AND FUEL FARM MAINTENANCE SAFE AND EFFICIENT!



TANK SUPPORT

TANK ACCESSORIES:

- ANCHOR BOLTS
- BULKHEADS AND BAFFLES
- CUSTOM NAME AND TECHNICAL DATA PLATES
- DISCHARGE PIPING
- EQUIPMENT PACKAGES
- GAUGE AND PUMP SHELVES
- GROUND LEVEL LOAD (REMOTE FILL)
- SIDE MOUNT LADDER / CATWALK
- PUMP PLATFORM 24" x 36"
- REINFORCING PADS
- SIGHT TUBES
- SPILL BOX
- WEAR PLATES

NOTE: PROVIDE GROUND LEVEL FILLING TO TOP OF TANK, WITH VENT.

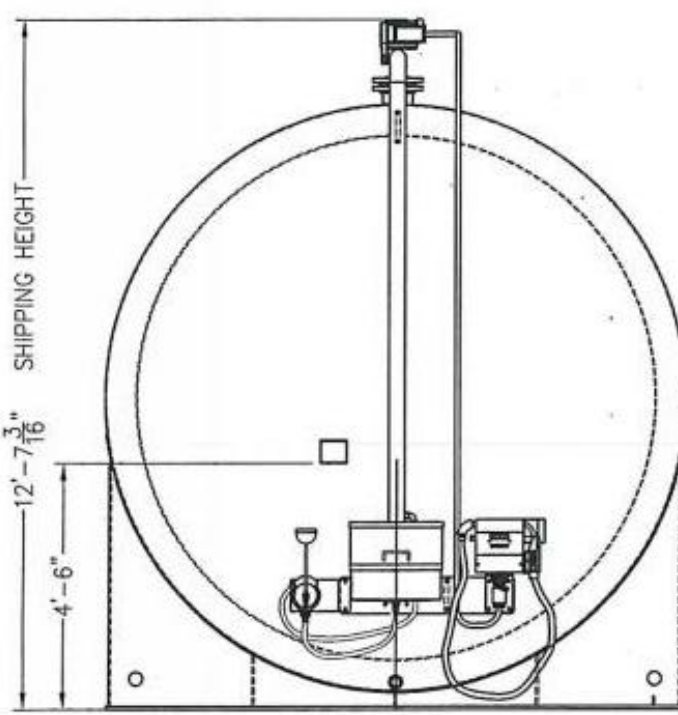
2C

RUNG LADDER AND 3' X 18' PLATFORM THAT EXTENDS TO BOTH ENDS OF EACH FUEL TANK - GALVANIZED

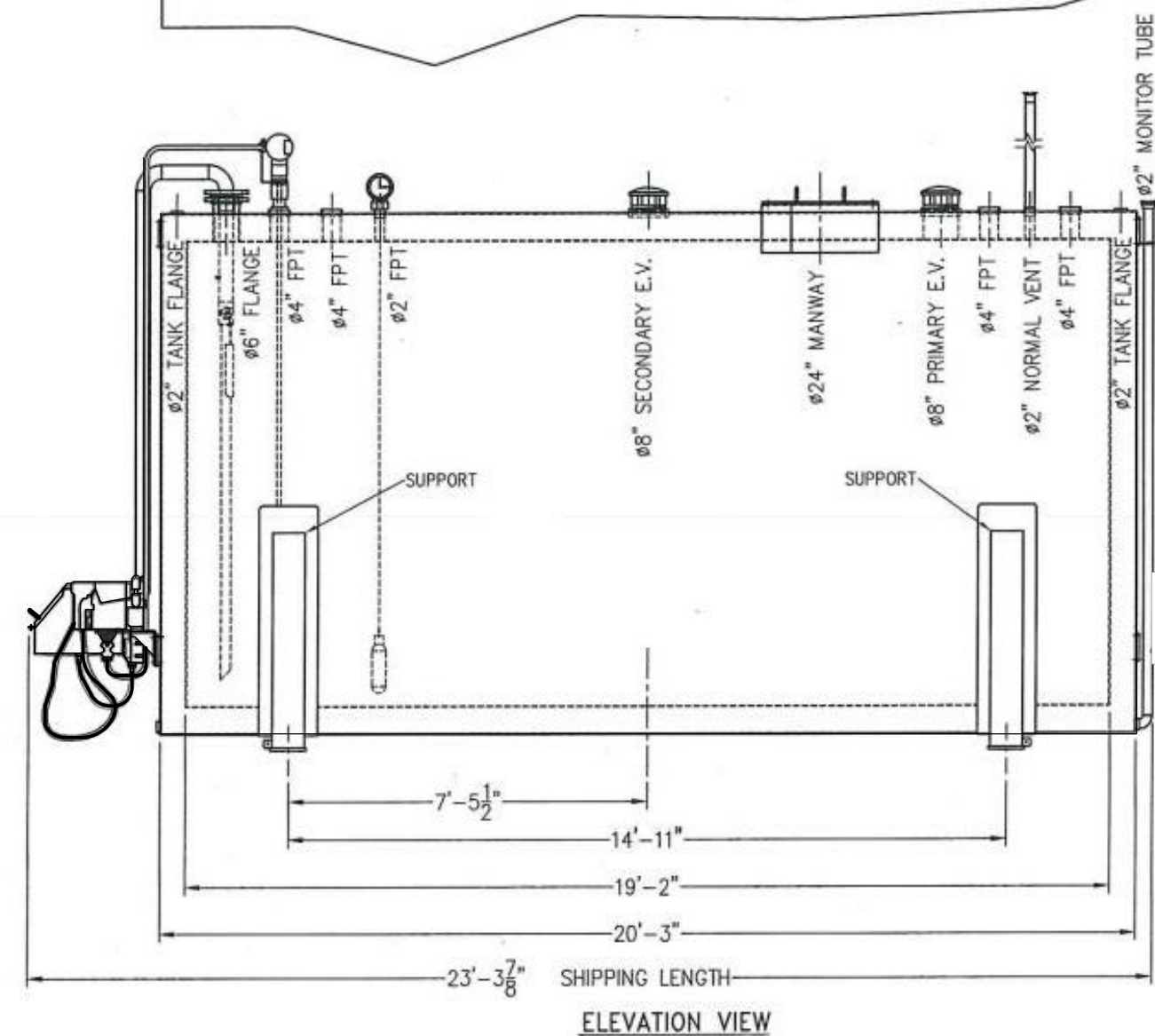
NOT TO SCALE

FUEL TANK PARTS

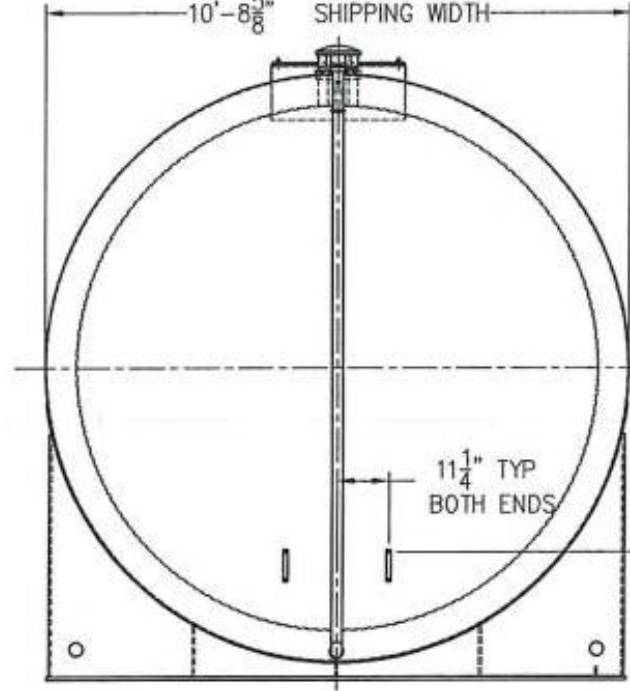
- | | |
|--------------|---|
| 133-MHC-1000 | 10,000 GALLON CYLINDRICAL TANK SUPER VAULT |
| 16SVEQ1005 | 2" MORRISON AUTOMATIC SHUTOFF VALVE EVR |
| 16SVGF30015 | HINGED GROUND LEVEL FILL SPILL PAN WITH HAND PUMP |
| 16SVGF10503 | MHC 3" D5 NON-CARB GROUND LEVEL FILL SYSTEM |
| 16SVGF20503 | MHC 3" D5 CARB GROUND LEVEL FILL SYSTEM |
| SVEQB0160 | GASOLINE PHASE I & II DISPENSING PACKAGE WITH SUCTION PUMP & W&M WAYNE TANK MOUNTED DISPENSER |
| L&P10KD5 | RUNG LADDER AND 3'x10' PLATFORM MCF STANDARD - GALVANIZED |
| TA-732A | SECONDARY ALARM & SENSORS |



LEFT END VIEW



ELEVATION VIEW



RIGHT END VIEW

CUSTOMER SIGNATURE: _____
DATE: _____
SHOP ORDER NO.: _____
EST. STEEL TANK WEIGHT: _____

MODEL NO. MHC-D5-10000

VENTING CAPACITY
PRIMARY: 372,600 SCFH
SECONDARY: 410,800 SCFH

2B

TANK ACCESSORIES

NOT TO SCALE

CONNECTION DIA.	PRIMARY TANK	CUT HOLE	SECONDARY TANK
#2" FPT	#2 1/2"	#2 7/8"	
#4" FPT	#5 11/16"	#5 3/8"	
#6" FPT	#6 3/4"	#7 5/8"	
#6" FLANGE	#6 3/4"	#6 3/4"	
#8" SEC. E.V.	-	#6 3/4"	
#8" PRIM. E.V.	#8 3/4"	#9 3/4"	
#24" MANWAY	#25 9/16"	#25 9/16"	

No.	REVISION	DATE

Drawing Title:
PRECISE GRADING PLAN

TANKS DETAILS

Revision Date: _____
Scale: _____
Drawn By: MS
Reviewed By: HN
Date: 12/18/19
Drawing Size: 24 x 36

Drawing Number

2.11
05 of 11 Sheets



COUNTY OF SAN BERNARDINO

ARCHITECTURE & ENGINEERING DEPARTMENT

385 NORTH ARROWHEAD AVENUE
SAN BERNARDINO, CA 92415-0184

Project Title:
BAKER FUEL SITE

CIP NUMBER:

Project No:
2SAN020200

Project Address:
Fire Station 53
72734 Baker Blvd. Baker CA 92309

P S O M A S

3 Hutton Centre Drive
Suite 200
Santa Ana, CA 92707
(714) 751-7373 Fax(714) 545-8883



Model 927/928/735DC Series & 9095A5201

SPECIFICATION SHEET

The Morrison 927 dry disconnect adaptor is installed at the fill point in the fill line of a fuel storage tank system. The internal spring loaded poppet assembly remains closed providing a liquid-tight seal when not connected to a dry disconnect adaptor.

The Morrison 928 dry disconnect coupler is installed on the end of delivery vehicle hose. When coupled, the 927 and 928 provide a liquid-tight connection enabling a dry connection and a dry disconnection.

The 735DC dust cap serves as a protective cover for the 927 adaptor when not in use.



I.D. Number	Size	Description	A	B	C	D	E	Cap Size	Weight (lbs)
927--0150 1A	1½"	Dry disconnect adaptor			A		N		1.63
927--0200 AA	2"	Dry disconnect adaptor, cam style			AA		N		1.68
927--0200AAEVR	2"	Dry disconnect adaptor, alum w/Viton®	2S	2½	A	V	Y	2½"	1.98
927--0300AAEVR	3"	Dry disconnect adaptor, alum w/Viton®	3N	4	A	V	Y	4"	3.50
927--0400AAEVR	4"	Dry disconnect adaptor, alum w/Viton®	4N	4	A	V	Y	4"	3.50
9095A5201AAEVR	4" x 2"	Dry disconnect adaptor, alum w/Viton®	4N	2½	A	V	Y	2½"	2.50
927B--0200 AA	2"	Dry disconnect adaptor, cam/groove style			B				
927S--0150 1A	1½"	Dry disconnect adaptor			SS				
927S--0200 1A	2"	Dry disconnect adaptor			SS				
927S--0300 1A	3"	Dry disconnect adaptor			SS				
928--0150ACEVR	1½"	Dry disconnect coupler, alum with Viton®	1N	2	A	V	Y		4.40
928--0200ACEVR	2"	Dry disconnect coupler, alum with Viton®	2N	2½	A	V	Y		6.0
928--0300ACEVR	3"	Dry disconnect coupler, alum with Viton®	3N	4	A	V	Y		12.60
735DC-2000ACEVR	2"	Dust cap, use w/ 1½" 927 adaptors			A	B	Y		1.0
735DCA2000ACEVR	2"	Dust cap, use w/ 1½" 927 adaptors			AA	B	Y		1.0
735DC-2500ACEVR	2½"	Dust cap, use w/ 2" 927 adaptors			A	B	Y		1.25
735DCA2500ACEVR	2½"	Dust cap, use w/ 2" 927 adaptors			AA	B	Y		1.25
735DC-3000ACEVR	3"	Dust cap, use w/ 3" adaptors			A	B	Y		1.50
735DCA3000ACEVR	3"	Dust cap, use w/ 3" adaptors			AA	B	Y		1.50
735DC-4000ACEVR	4"	Dust cap, use w/ 3" & 4" 927 adaptors			A	B	Y		2.50
735DCA4000ACEVR	4"	Dust cap, use w/ 3" & 4" 927 adaptors			AA	B	Y		2.50

SPECIFICATION OPTIONS:

A—Threads: 1½" NPT (1N); 2" NPT (2N); 2" NPS (2S); 3" NPT (3N); 4" NPT (4N)
B—Coupler Size
C—Body: Hard coated aluminum (A); Anodized aluminum (AA); Brass (B); Stainless steel (SS)
D—Seals: Viton® (V); Buna-N (B)
E—EVR: Yes (Y); No (N)

570 E. 7th Street, P.O. Box 238 | Dubuque, IA 52004-0238
t. 563.583.5701 | 800.553.4840 | f. 563.583.5028
www.morbro.com

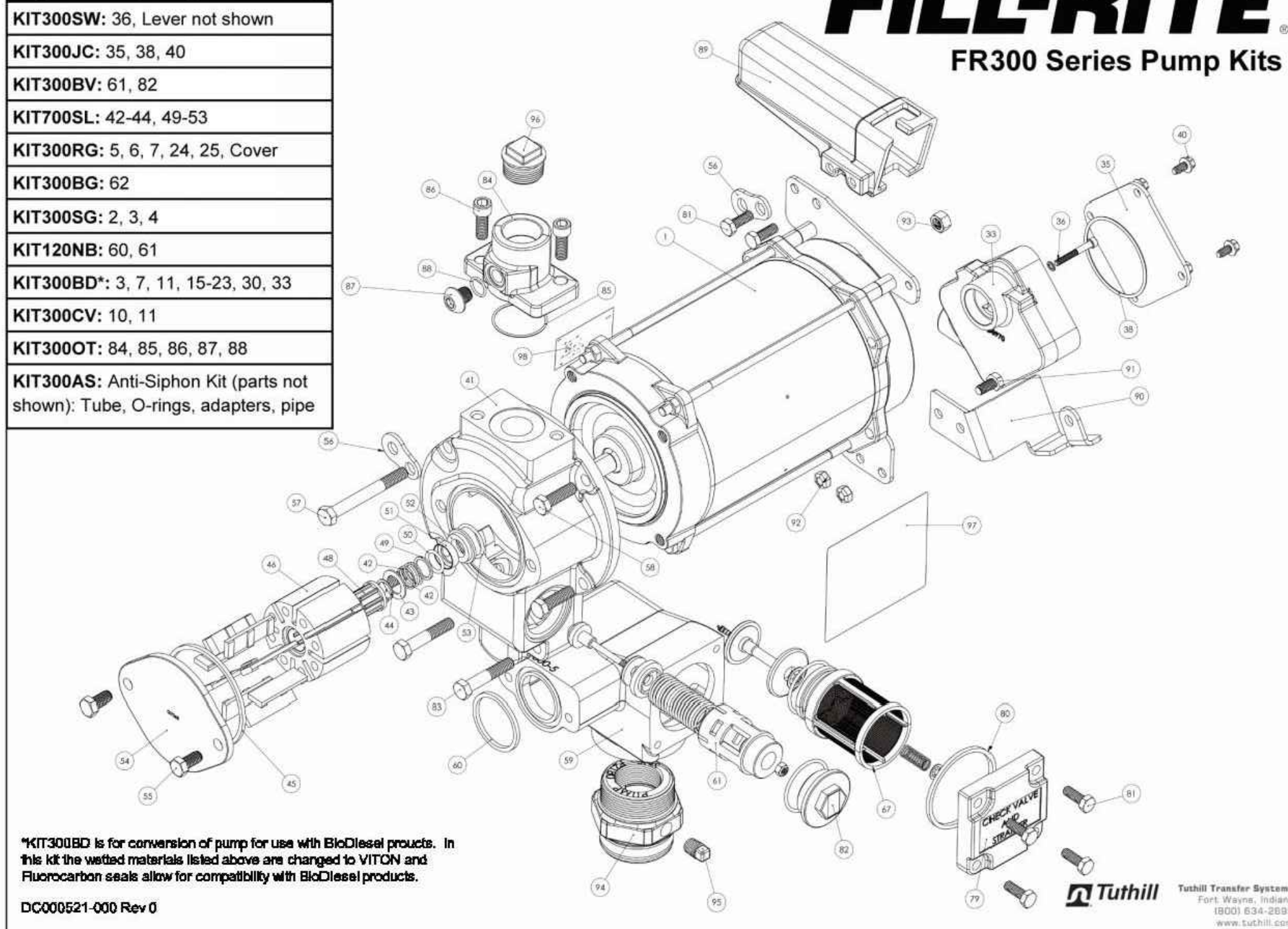
MORRISON BROS. CO.

2E MORRISON 927-0200AA 2" VALVE

Repair Kits (kit # / parts included)

KIT300SW:	36, Lever not shown
KIT300JC:	35, 38, 40
KIT300BV:	61, 82
KIT700SL:	42-44, 49-53
KIT300RG:	5, 6, 7, 24, 25, Cover
KIT300BG:	62
KIT300SG:	2, 3, 4
KIT120NB:	60, 61
KIT300BD:	3, 7, 11, 15-23, 30, 33
KIT300CV:	10, 11
KIT300OT:	84, 85, 86, 87, 88
KIT300AS:	Anti-Siphon Kit (parts not shown): Tube, O-rings, adapters, pipe

FILL-RITE®
FR300 Series Pump Kits



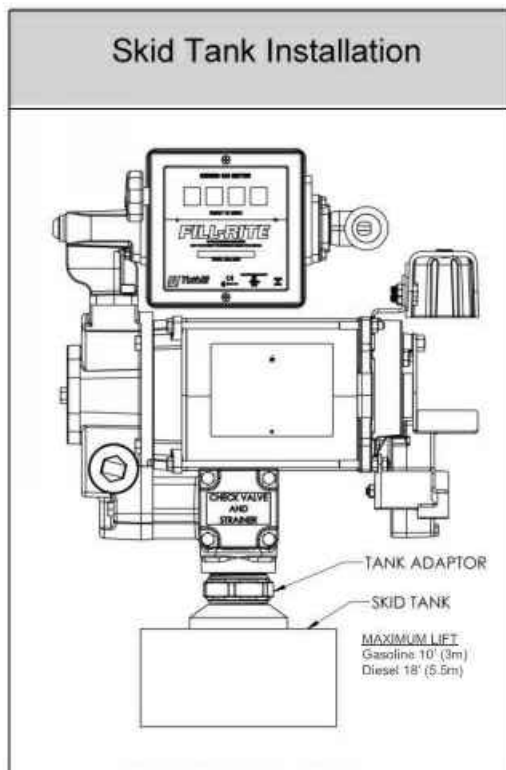
*KIT300BD is for conversion of pump for use with BioDiesel products. In this kit the wetted materials listed above are changed to VITON and Fluorocarbon seals allow for compatibility with BioDiesel products.
DC000521-000 Rev 0

Materials:

- 1-1/4" pipe cut to a length that will terminate at least 3" from the bottom of the tank when installed into the tank adapter with the tank adapter installed into the tank flange (see SKID TANK INSTALLATION diagram).
- Threaded pipe joint sealant appropriate for application.

Installation Procedure:

- Thread the 1-1/4" pipe into the tank adapter. Seal threads liquid tight with appropriate thread sealant.
- Install the tank adapter into the tank flange; seal threads liquid tight with appropriate thread sealant.
- Mount the pump on the adapter; seal threads liquid tight with appropriate thread sealant.
- Fill-Rite recommends installation of our Anti-Siphon Device (see page 7 for detailed information).



FILL-RITE® FR313V Technical Specifications

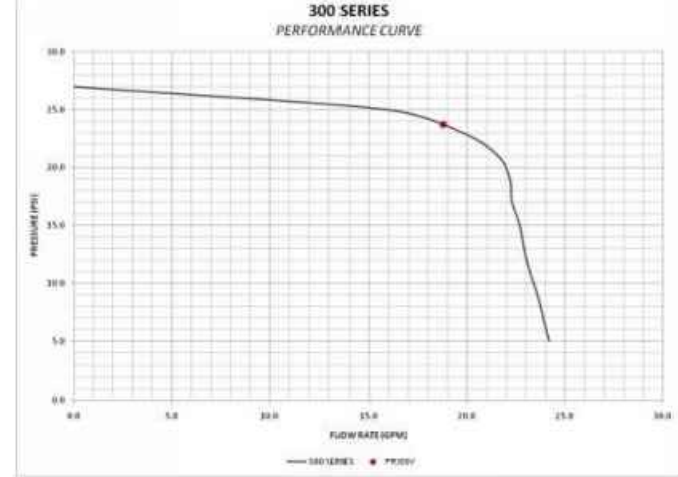
The Most Trusted Name in Pumps and Meters

Motor	
Power - AC	115, 230, 115/230
Hz	50, 60, 50/60
Power - DC	12, 24, 12/24
HP (horsepower) rating	3/4
Power cord length	None
Power cord gauge	N/A
Power cord DC battery connectors	N/A
Amps (FLA)	9.8/4.9/1.4/5.7 A
RPM	1725/1425
Duty cycle	30 min.
Thermal protection switch	Y
Circuit protection fuse	NONE
Certification	UL, cUL
Pump	
Type: rotary, diaphragm, gear, vane	Rotary Vane
GPM in supplied configuration	26.8
GPM open flow - no hose or nozzle	34.3
By-pass pressure rating (psi) - Max	26
Dry vac (in Hg)	14
Head- Max	60.06
Anti-siphon valve	Anti-siphon Ready
Inlet - Size / Thread	1 1/4"
Outlet - Size / Thread	NPT
Mount	Bung (NPT)
Materials of construction - pump housing	Cast Iron
Materials of construction - wetted material	Buna
Rotor materials of construction	80% Iron/20% Copper
Rotor vane material of construction	Carbon
Compatible fluids	Diesel, Gasoline, Bio-Diesel up to B20, E15, Kerosene
Strainer mesh size	40 x 40 x .008"
Warranty (yr)	2 Years
Accessories	
Suction pipe material	None
Suction pipe length- extended/not extended	None
Nozzle- size	None
Nozzle- manual / automatic	None
Hose liquid materials compatibility	None
Hose diameter	None
Hose length	None
Hose static wire (Y/N)	None
Logistics	
UPC	0-89404-07657-6
Length	19
Width	18
Height	18



FR313V

Sku/Kit #s	Small Pump Kits	Consists of
KIT300BD	Bio-Diesel	Special Shaft Seal Assembly, Gasket, Inlet Gasket, Bypass O-ring
KIT300BV	Bypass	Poppet, Spring, O-ring, Clip
KIT300JC	Junction Box	Junction Box Cover, O-Ring, Hardware
KIT300NB	Nozzle Boat	Nozzle Boot, Attaching Hardware
KIT300NR	Nozzle Retainer	Lockable Nozzle Retainer, Hardware
KIT300OT	Outlet	Outlet Flange, O-Ring Seal, hardware
KIT300RG	Rotary Gasket	Rotor, 8 Vanes, Rotor Key, Gasket, Rotor Cover, 4 Screws
KIT300SW	Switch Lever	Switch Lever, Nut
KIT700AS	Anti-Siphon	Anti-Siphon Hose and Hardware
KIT700BG	Inlet	Inlet Adapter
KIT700SL	Shaft Seal	8 Piece Assembly



Tuthill
Tuthill Transfer Systems
8825 Aviation Drive
Fort Wayne, IN 46809
(800) 634-2695
www.tuthill.com

- PUMP TO BE LOCATED AT TOP OF EACH TANK.

2D FILL-RITE 300 SERIES PUMP
NOT TO SCALE



COUNTY OF
SAN BERNARDINO

ARCHITECTURE &
ENGINEERING DEPARTMENT

385 NORTH ARROWHEAD AVENUE
SAN BERNARDINO, CA 92415-0184

Project Title:
BAKER FUEL SITE

CIP NUMBER:

Project No:
2SAN020200

Project Address:
Fire Station 53
72734 Baker Blvd. Baker CA 92309

P S O M A S

3 Hutton Centre Drive
Suite 200
Santa Ana, CA 92707
(714) 751-7373 Fax(714) 545-8883



No.	REVISION	DATE

Drawing Title:
PRECISE GRADING PLAN

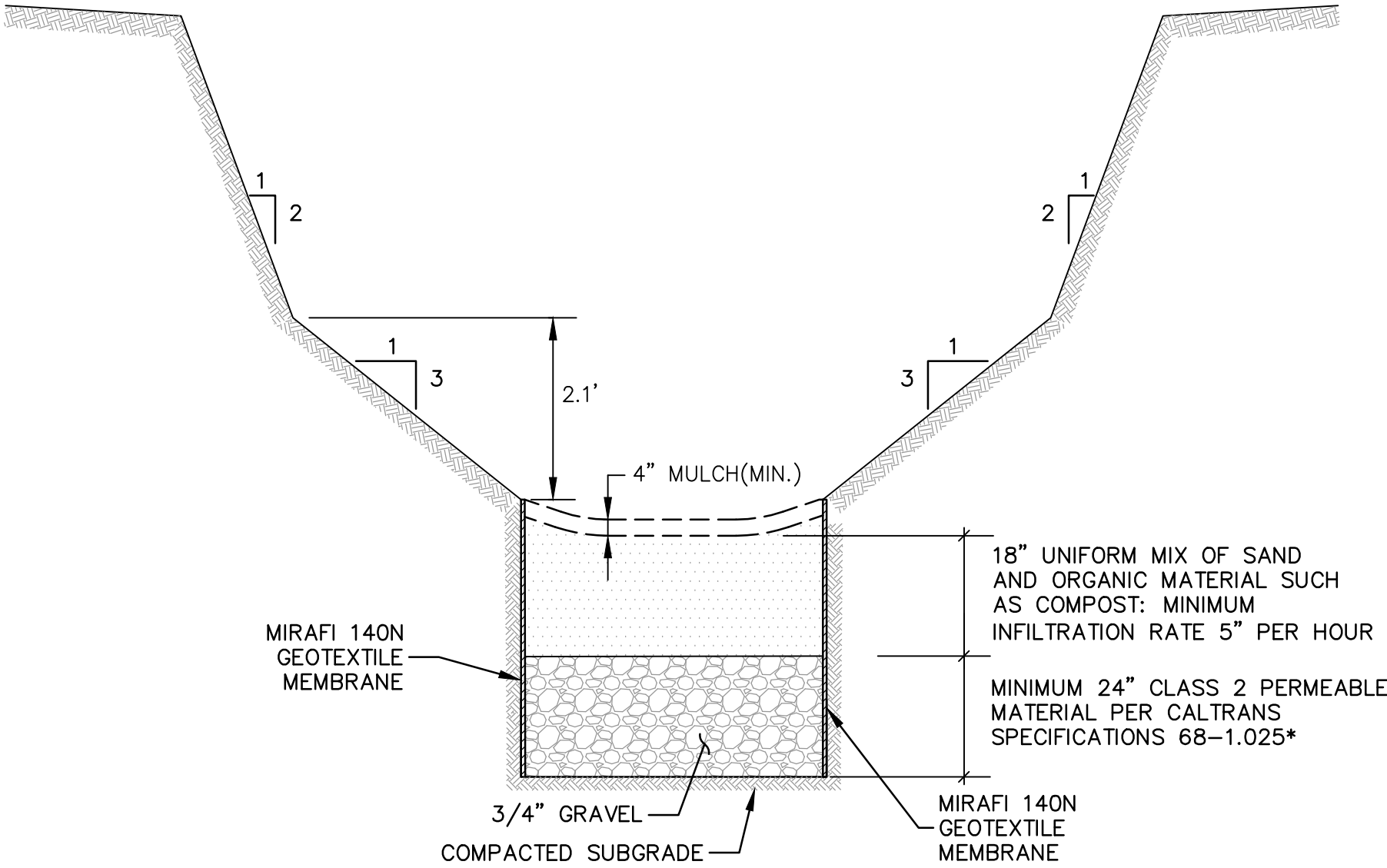
TANK
DETAILS

Revision Date:
Scale:
Drawn By: MS
Reviewed By: HN
Date: 12/18/19
Drawing Size: 24 x 36

Drawing Number

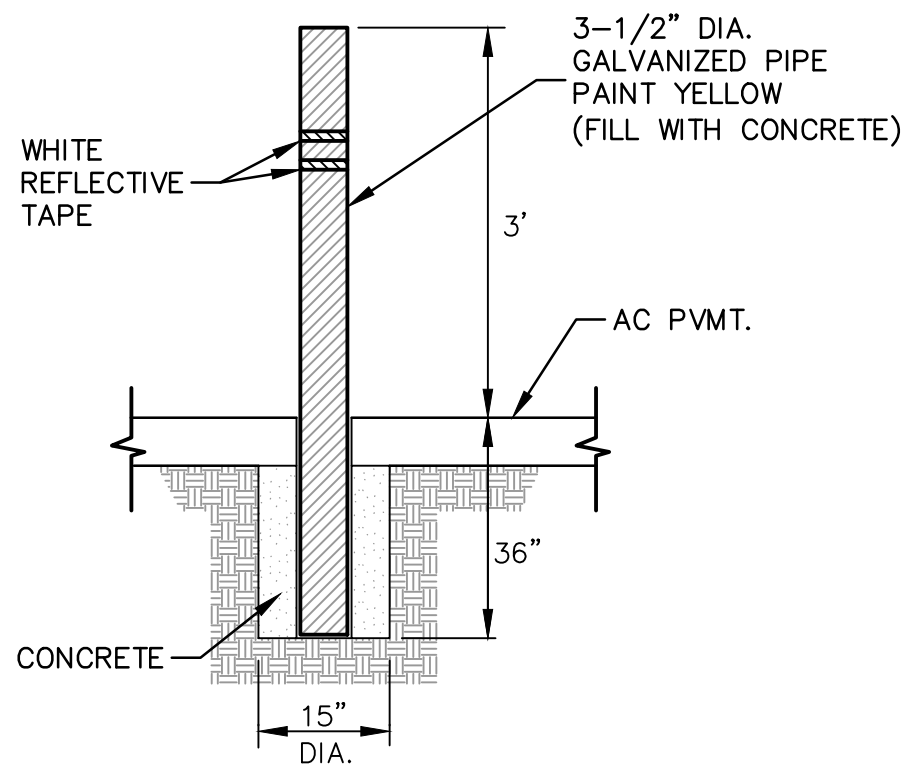
2.12
06 of 11 Sheets

Dec 16, 2019 - 7:47AM - M:\2SAN020200\ENGR\SHEETS\BAKER FUEL SITE LAYOUT PLAN\PL-BAKER_04-08 DET.DWG



LOCATION PER PLAN AND DETAIL

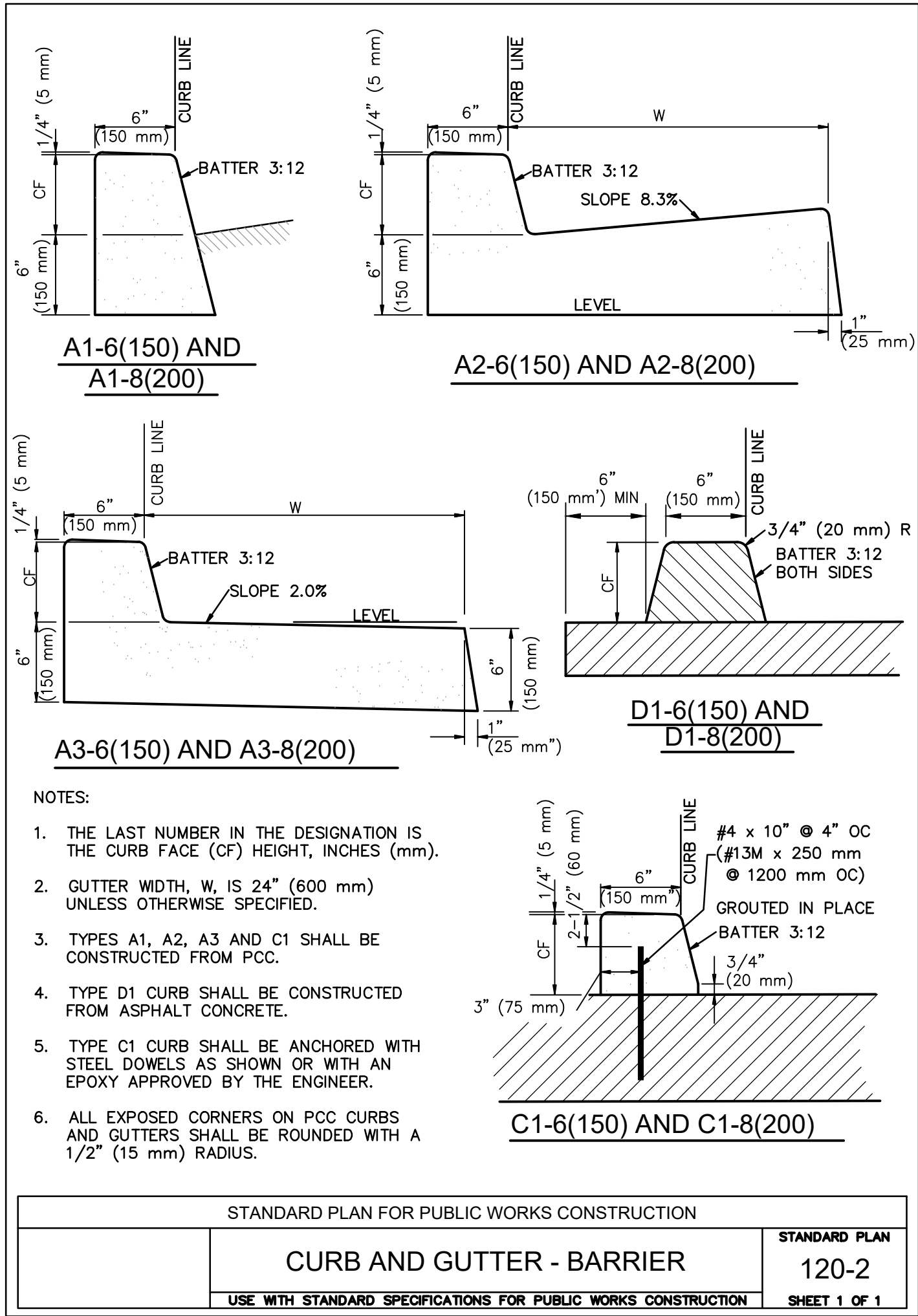
16 INFILTRATION BASIN DETAIL
NTS



NOTE:

1. CONCRETE $f_c' = 3000$ PSI @ 28 DAYS
2. PLACE BOLLARDS AT 3.5-FT O.C. (MAX).

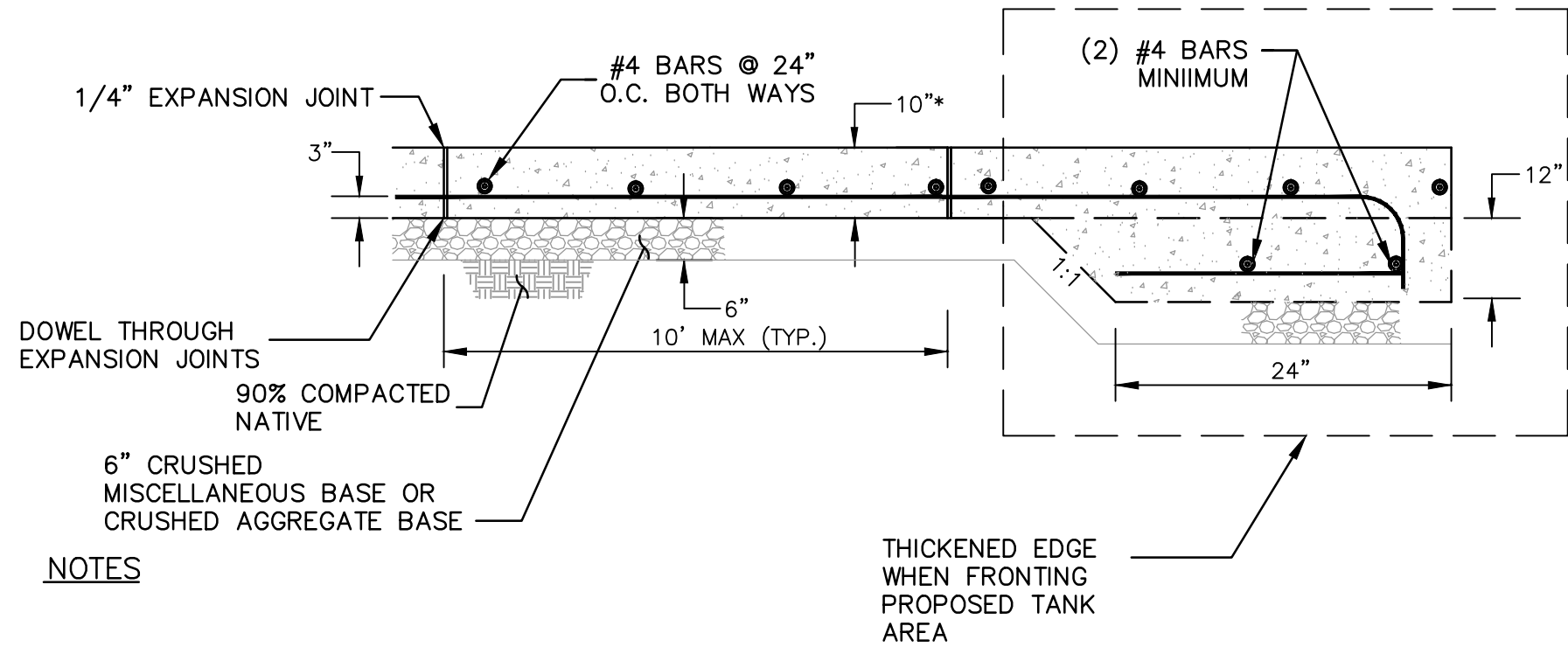
7 CONCRETE BOLLARD DETAIL
NOT TO SCALE



NOTE:

- * PLACE 1"-INCH PVC DRAIN AT LOW POINT WITH MANUAL BALL VALVE TO ALLOW DRAINAGE.

6 CONTAINMENT CURB (TYPE A1-6)
NOT TO SCALE



NOTES

1. BOTH TRANSVERSE AND LONGITUDINAL JOINTS SHOULD BE SPACED ON MAXIMUM 10 FEET INTERVALS. THE DEPTH OF TRANSVERSE WEAKENED PLANE JOINTS SHOULD BE AT LEAST 1/4 OF THE PAVEMENT THICKNESS. THE DEPTH OF LONGITUDINAL JOINTS SHOULD BE AT LEAST 1/4 OF THE PAVEMENT THICKNESS PLUS 1/2".
2. EXTERIOR CONCRETE SHOULD BE SUPPORTED ON NON-EXPANSIVE, COMPACTED FILL. THE USE OF CLAYEY SOILS IN THE SLAB SUBGRADE SHOULD NOT BE PERMITTED WITHIN 1 FOOT OF THE FINISHED SUBGRADE.
3. REFER TO THE GEOTECHNICAL REPORT (IF PROVIDED)

- * CONCRETE THICKNESS WILL BE VERIFIED BY THE SOIL ENGINEER AFTER GRADING (DEPENDING ON THE R-VALUE AND THE EXPANSIVITY INDEX OF THE SOIL)

5 10" CONCRETE PAVEMENT DETAIL
NTS



COUNTY OF
SAN BERNARDINO

ARCHITECTURE &
ENGINEERING DEPARTMENT

385 NORTH ARROWHEAD AVENUE
SAN BERNARDINO, CA 92415-0184

Project Title:
BAKER FUEL SITE

CIP NUMBER:

Project No:
2SAN020200

Project Address:
Fire Station 53
72734 Baker Blvd. Baker CA 92309

P S O M A S

3 Hutton Centre Drive
Suite 200
Santa Ana, CA 92707
(714) 751-7373 Fax(714) 545-8883



No.	REVISION	DATE

Drawing Title:
PRECISE GRADING PLAN

TANK LAYOUT
DETAILS

Revision Date:	
Scale:	
Drawn By:	MS
Reviewed By:	HN
Date:	12/18/19
Drawing Size:	24 x 36

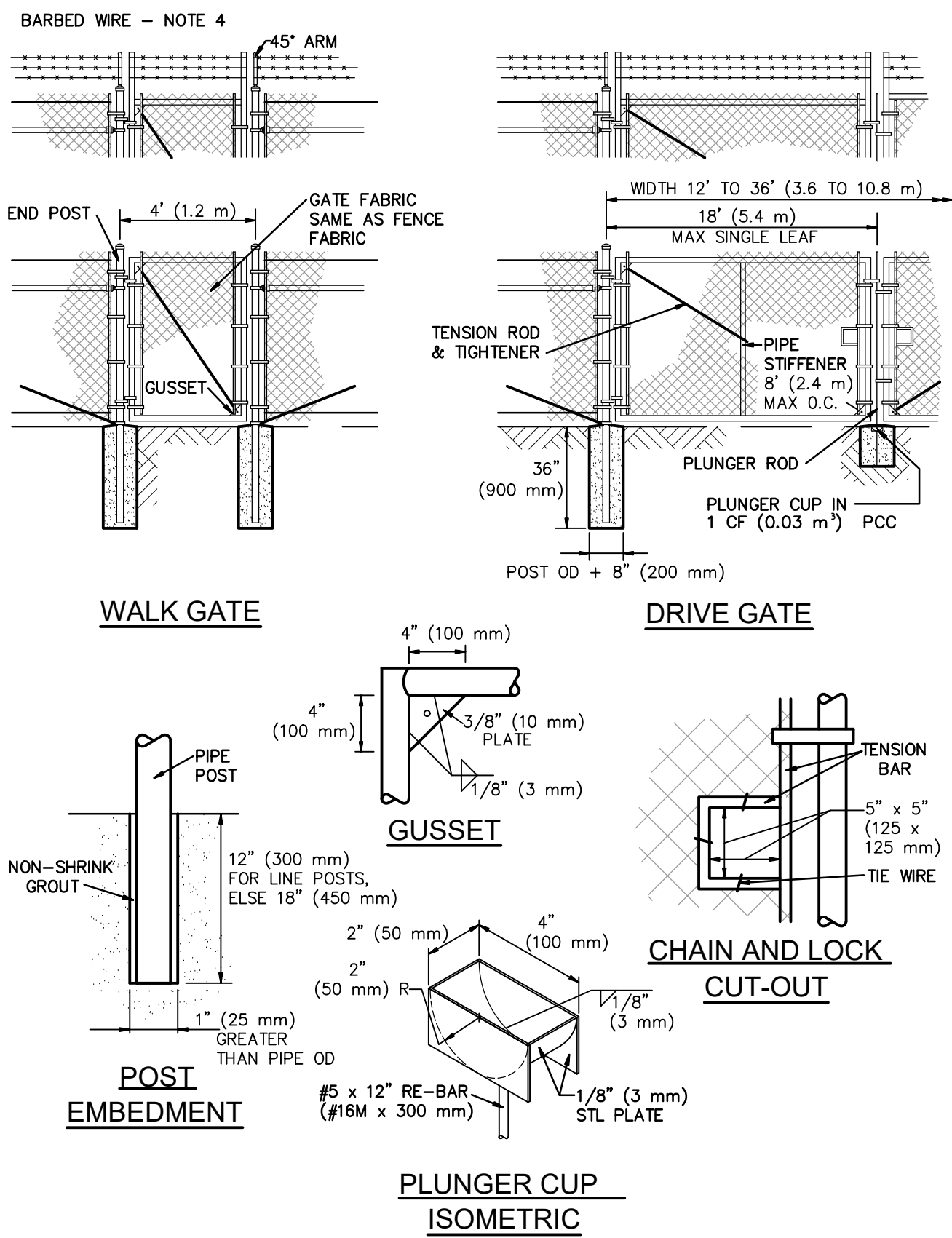
Drawing Number

2.13
07 of 11 Sheets

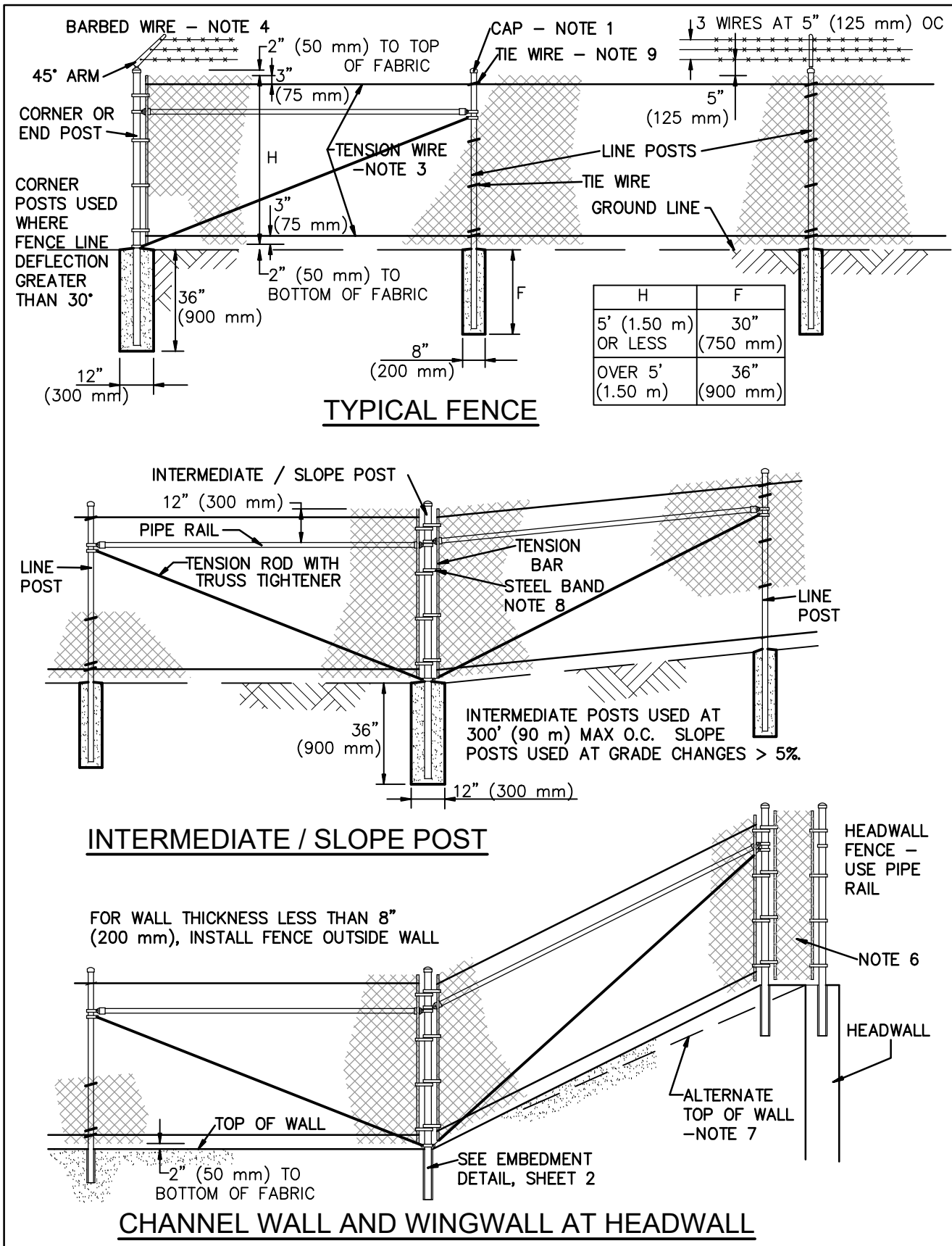
Dec 16, 2019 -- 7:47AM -- M:\25AND20200\ENGR SHEETS\BAKER FUEL SITE LAYOUT PLAN\PL-BAKER_04-08.DET.DWG

NOTES:

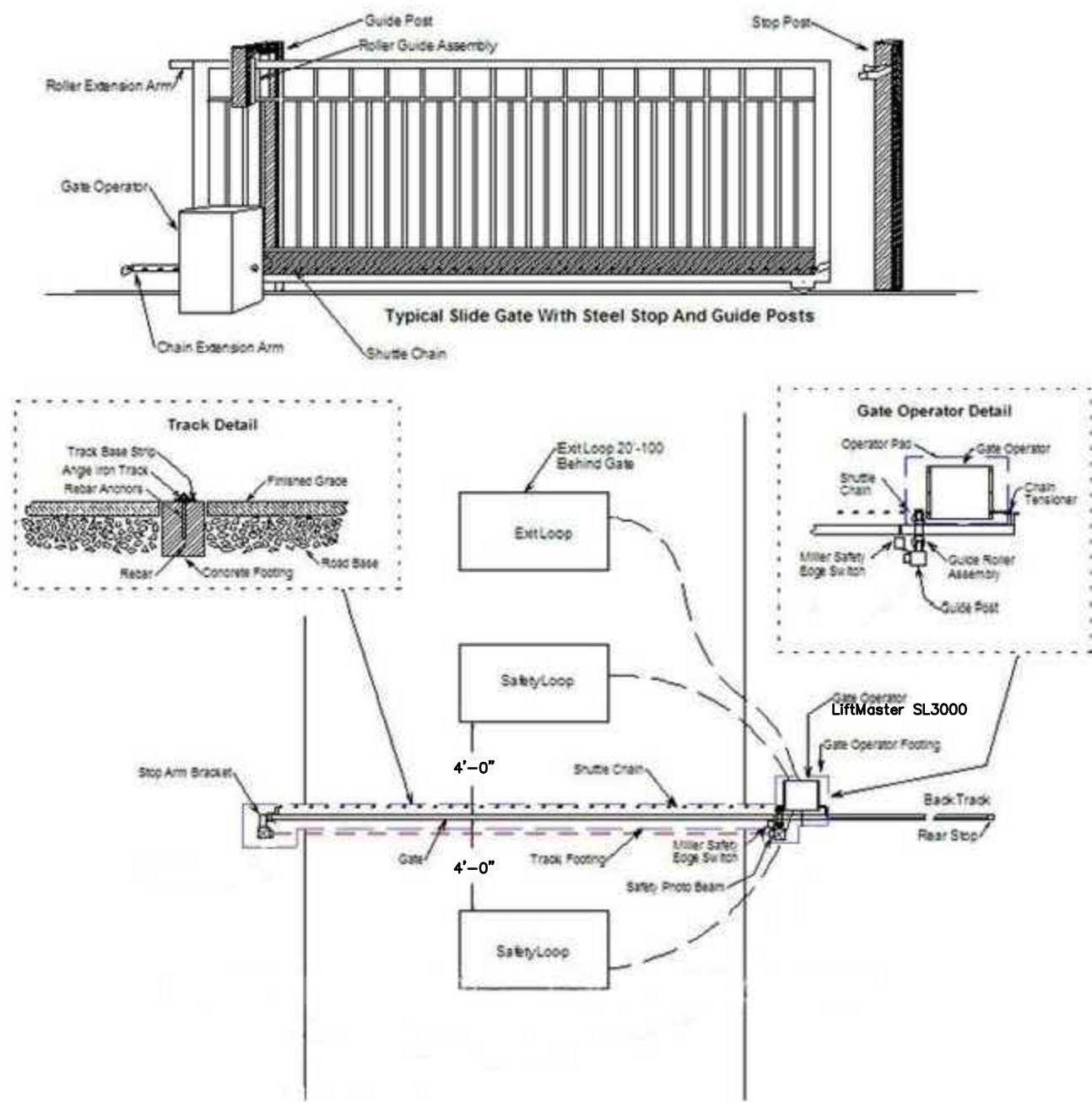
1. SECURE DRIVE-FIT GALVANIZED CAP TO POST WITH 1/4" (6 mm) ROUND-HEAD RIVET.
2. H DENOTES FABRIC WIDTH AND NOMINAL FENCE HEIGHT. H = 5' (1.5 m) UNLESS OTHERWISE NOTED.
3. IF FENCE WITH TOP RAIL IS SPECIFIED, DELETE STEEL TENSION WIRE AT TOP, AND PIPE RAILS AT INTERMEDIATE, SLOPE, END AND CORNER POSTS. EXTEND TENSION ROD TO TOP RAIL.
4. BARBED WIRE SHALL BE USED ONLY WHEN SPECIFIED.
5. POST SPACING IS MAXIMUM 10' (3.0 m).
6. FILL CLEAR OPENINGS GREATER THAN 3" (75 mm) WITH FABRIC. FOR OPENINGS LESS THAN 18" (450 mm), TIE FABRIC TO POSTS.
7. USE ONE POST FOR COMBINED SLOPE AND CORNER POST IF TOP OF CHANNEL WALL IS CONSTRUCTED AS SHOWN FOR "ALTERNATE".
8. STEEL BANDS AT TENSION BARS SHALL BE 1/8" x 1" (3 x 25 mm), MINIMUM, SPACED AT MAXIMUM 16" (400 mm).
9. SECURE TENSION WIRES TO EACH LINE POST WITH TIE WIRES.



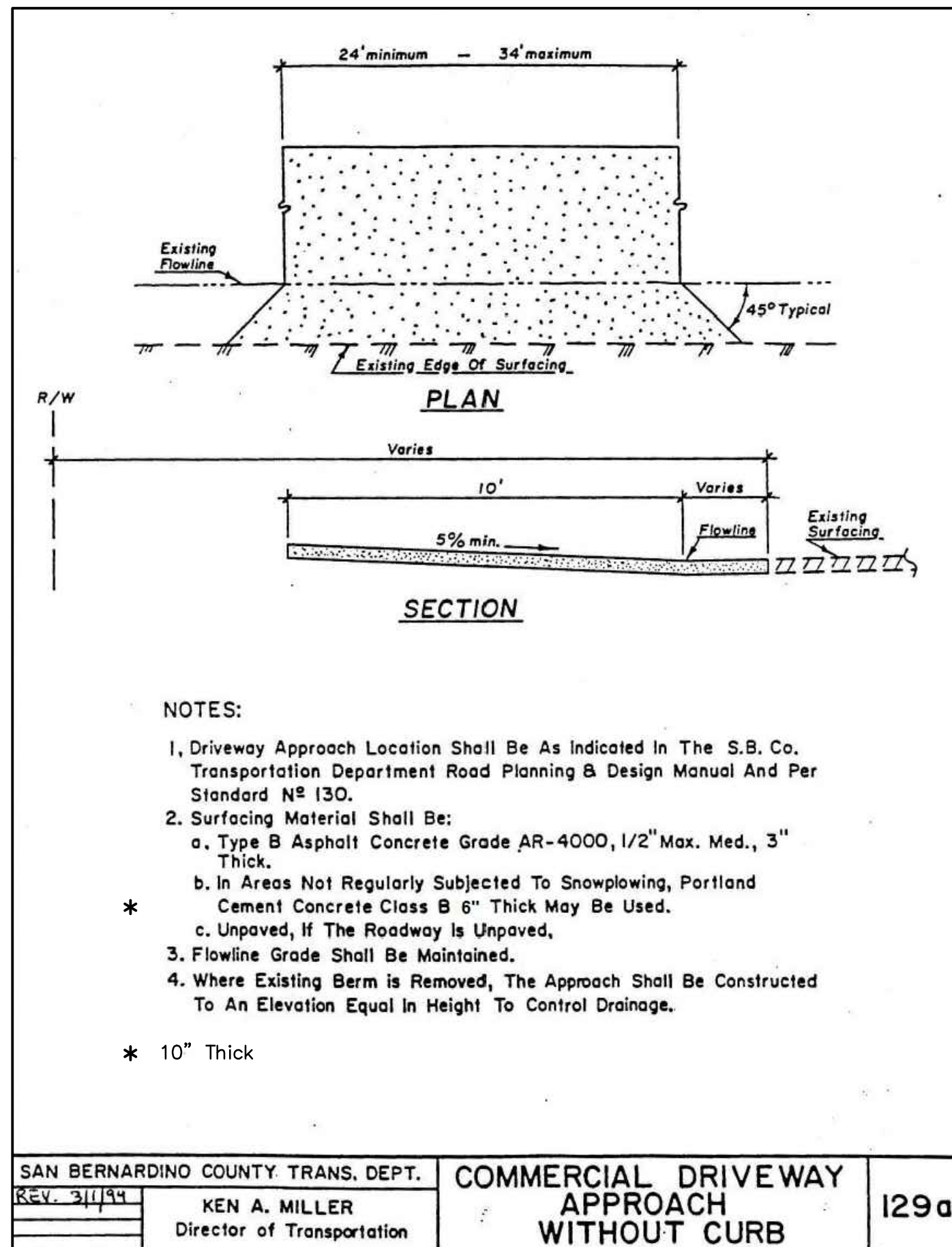
15 14 TYPICAL CHAIN LINK FENCE AND GATES
NOT TO SCALE



STANDARD PLANS FOR PUBLIC WORKS CONSTRUCTION	
CHAIN LINK FENCE AND GATES	600-3
USE WITH STANDARD SPECIFICATIONS FOR PUBLIC WORKS CONSTRUCTION	
SHEET 1 OF 3	



13 12 11 SLIDING GATE LAYOUT
NOT TO SCALE



SAN BERNARDINO COUNTY TRANS. DEPT.		COMMERCIAL DRIVEWAY APPROACH WITHOUT CURB	129a
REV. 3/1/99	KEN A. MILLER Director of Transportation		

10 DRIVEWAY APPROACH
NOT TO SCALE



COUNTY OF
SAN BERNARDINO

ARCHITECTURE &
ENGINEERING DEPARTMENT

385 NORTH ARROWHEAD AVENUE
SAN BERNARDINO, CA 92415-0184

Project Title:
BAKER FUEL SITE

CIP NUMBER:

Project No:
2SAN020200

Project Address:
Fire Station 53
72734 Baker Blvd. Baker CA 92309

P S O M A S

3 Hutton Centre Drive
Suite 200
Santa Ana, CA 92707
(714) 751-7373 Fax(714) 545-8883



No.	REVISION	DATE

Drawing Title:
PRECISE GRADING PLAN

SITE
DETAILS

Revision Date:	
Scale:	
Drawn By:	MS
Reviewed By:	HN
Date:	12/18/19
Drawing Size:	24 x 36

Drawing Number

2.14

08 of 11 Sheets

A	AT	SCHED.	SCHEDULE
ABV	AMPERES	SHT	SHEET
A/C	ABOVE	SOL	SOLENOID
AF	AIR CONDITIONING	SPKR	SPEAKER
AFC	AMP FUSE OR AMP FRAME	SQ. FT.	SQUARE FEET
A.F.F.	AVAILABLE FAULT CURRENT (SYMMETRICAL)	STD.	STANDARD
ARCH.	ABOVE FINISHED FLOOR	SURF.	SURFACE
AS	ARCHITECT	SW.	SWITCH
AT	AMP SWITCH	SWBD	SWITCHBOARD
ATS	AMP TRIP	SYS.	SYSTEM
AUTO	AUTOMATIC TRANSFER SWITCH	TAC	TENANT AIR CONDITIONING
BKBD	AUTOMATIC	TEL	TELEPHONE
C	BACKBOARD	TEMP.	TEMPORARY OR TEMPERATURE
C	CONDUIT	TRANSF.	TRANSFORMER
CAP.	CAPACITY	TTB	TELEPHONE TERMINAL BACKBOARD
CATV	COMMUNITY ANTENNA TELEVISION	TV	TELEVISION
CB	CIRCUIT BREAKER	TYP	TYPICAL
CCTV	CLOSED CIRCUIT TELEVISION	U.G.	UNDERGROUND
C.I.	CAST IRON	U.O.N.	UNLESS OTHERWISE NOTED
CKT	CIRCUIT		
CLG.	CEILING	V	VOLT
CLR.	CLEAR	VA	VOLT AMPERES
C.O.	CONDUIT ONLY	V.D.	VOLTAGE DROP
COMPR.	COMPRESSOR	VERT.	VERTICAL
CONC.	CONCRETE	W	WATTS OR WIRE OR WIDE
CONDR.	CONDENSER	W/O	WITH
CONN.	CONNECT OR CONNECTION	W/O	WITHOUT
CONT.	CONTINUOUS/CONTINUATION	W.P.	WEATHERPROOF
C.W.	COLD WATER		
D	DEPTH		
DET.	DETAIL		
DIA.	DIAMETER		
DISC.	DISCONNECT		
DN	DOWN		
DWG	DRAWING		
EA	EACH		
EDF	ELECTRIC DRINKING FOUNTAIN		
ELEC	ELECTRIC OR ELECTRICAL		
ELEV	ELEVATION OR ELEVATOR		
EMERG.	EMERGENCY		
EQUIP.	EQUIPMENT		
EXIST.	EXISTING		
EXT.	EXTERIOR		
FA	FIRE ALARM		
FDR.	FEEDER		
FIXT.	FIXTURE		
FLA	FULL LOAD AMPERES		
FLR	FLOOR		
FLUOR.	FLUORESCENT		
GALV.	GALVANIZED		
GEN	GENERATOR		
GFCI	GROUND FAULT CIRCUIT INTERRUPTER		
GFI	GROUND FAULT INTERRUPTER		
GND	GROUND		
H	HIGH OR HEIGHT		
HORIZ.	HORIZONTAL		
HP	HORSEPOWER		
HTR	HEATER		
HVAC	HEATING, VENTILATING AND AIR CONDITIONING		
I.C.	INTERCOM		
I.G.	ISOLATED GROUND		
INCAND.	INCANDESCENT		
IND.	INDICATED		
INT.	INTERIOR		
JB	JUNCTION BOX		
KVA	KILOVOLT AMPERES		
KW	KILOWATT		
KWH	KILOWATT HOUR		
L	LENGTH		
LCL	LONG CONTINUOUS LOAD		
LOC.	LOCATION		
LTG	LIGHTING		
L.V.	LOW VOLTAGE		
MAC	MALL AIR CONDITIONING		
MAX	MAXIMUM		
MCC	MOTOR CONTROL CENTER		
MECH	MECHANICAL		
MFR.	MANUFACTURER		
MH	MANHOLE		
MIN	MINIMUM OR MINUTES		
MTD	MOUNTED		
MTG	MOUNTING		
MTG. HT.	MOUNTING HEIGHT		
NA	NOT APPLICABLE		
N/A	NON-AUTOMATIC		
NF	NON FUSIBLE		
N.L.	NIGHT LIGHT		
NTS	NOT TO SCALE		
OL	OVERLOADS		
P	POLE		
PA	PUBLIC ADDRESS		
PB	PULLBOX		
P.C.	PHOTOCELL		
PNL	PANEL		
P.O.C.	POINT OF CONNECTION		
PR	PAIR		
PWR.	POWER		
RECEPT	RECEPTACLE		
REQ'D	REQUIRED		
RM	ROOM		

BRANCH CIRCUIT PANELBOARD

SWITCHBOARDS, TRANSFORMATION PANELBOARD OR MOTOR CONTROL CENTER TRANSFORMER, SIZE AS INDICATED ON PLAN

CONDUIT RUN CONCEALED IN CEILING OR WALL (SEE SPECIAL SYSTEMS AND DEFINITION SYMBOLS FOR RACEWAY CODING)

CONDUIT RUN EXPOSED

CONDUIT RUN BELOW FLOOR SLAB OR GRADE

#10

HASH MARKS INDICATE THE QUANTITY OF CONDUCTORS REQUIRED. UNLESS OTHERWISE NOTED, NO HASH MARKS INDICATE 2 #12 AWG (#10 AWG CONDUCTORS INDICATED), WHERE A NUMBER IS NOT INDICATED, THE CONDUCTORS ARE #12 AWG (MIN).

CONDUIT SIZE SHALL BE AS FOLLOWS:

	CONDUCTORS			
MIN. RACEWAY SIZE	12	10	8	
THREE-QUARTER INCH (MIN)	1 to 6	1 to 6	1 to 3	
ONE INCH	9 to 13	7 to 11	4 to 5	

*QUANTITY OF CONDUCTORS AS INDICATED (TYP.)

INDICATES A HOMERUN TO PANEL 2LA, CIRCUITS 1-3-5 WITH SHARED NEUTRAL AND CIRCUIT 7 WITH DEDICATED NEUTRAL

FLEXIBLE CONDUIT

CABLE OR CORD

ARROW INDICATES A PLUG-IN CONNECTION

—G—

GROUND CONDUCTOR

NOTES: 1) MOUNTING HEIGHTS NOTED ARE DISTANCES MEASURED FROM THE DEVICE CENTERLINE TO THE FINISH FLOOR OR FINISH GRADE, UNLESS OTHERWISE NOTED.

2) CIRCLE WITH A NUMBER INSIDE REFERS TO A SPECIAL NOTE ON THE DRAWING WHERE IT IS INDICATED.

○

CONDUIT BEND UP TOWARD OBSERVER

●

CONDUIT BEND DOWN AWAY FROM OBSERVER

WITH MOUNTING HEIGHT +46" (U.O.N.)

<input type="checkbox"/>	DISCONNECT SWITCH WITH OVERCURRENT PROTECTION. SIZE AS REQUIRED BY EQUIPMENT MANUFACTURER. U.O.N.
<input checked="" type="checkbox"/>	COMBINATION MOTOR STARTER-DISCONNECT DEVICE, WITH OVERCURRENT PROTECTION UNLESS OTHERWISE NOTED
<input checked="" type="checkbox"/>	MAGNETIC MOTOR STARTER.
S _m	MANUAL MOTOR SWITCH WITH THERMAL OVERLOAD PROTECTION.
S _T	MOTOR RATED TOGGLE DISCONNECT SWITCH.

EP ④ SURFACE MOUNTED JUNCTION BOX, EP INDICATE EXPLOSION PROOF

EP ④ ABOVE GROUND JUNCTION BOX 12" ABOVE FINISH FLOOR,
EP INDICATE EXPLOSION PROOF.

3. TYPICAL N.E.C. ARTICLE 514 CLASS 1 LOCATION (UNDERGROUND TANK – FILL OPENING) EXTENT OF CLASS 1, GROUP D, DIVISION 1 LOCATION:
ANY PIT, BOX OR SPACE BELOW GRADE LEVEL, ANY PART OF WHICH IS WITHIN THE DIVISION 1 OR 2 CLASSIFIED LOCATION. EXTENT OF CLASS 1, GROUP D, DIVISION 2 LOCATION:
UP TO 18 INCHES ABOVE GRADE LEVEL WITHIN A HORIZONTAL RADIUS OF 10 FEET FROM A LOOSE FILL CONNECTION AND WITHIN A HORIZONTAL RADIUS OF 5 FEET FROM A TIGHT FILL CONNECTION.
2. TYPICAL N.E.C. ARTICLE 514 CLASS 1 LOCATION (UNDERGROUND TANK – VENT-DISCHARGE UPWARD) EXTENT OF CLASS 1, GROUP D, DIVISION 1 LOCATION:
WITHIN 3 FEET OF OPEN END OF VENT, EXTENDING IN ALL DIRECTIONS. EXTENT OF CLASS 1, GROUP D, DIVISION 2 LOCATION:
SPACE BETWEEN 3 FEET AND 5 FEET OF OPEN END OF VENT, EXTENDING IN ALL DIRECTIONS.
3. TYPICAL N.E.C. ARTICLE 514 CLASS 1 LOCATION (REMOTE PUMP – OUTDOOR) EXTENT OF CLASS 1, GROUP D, DIVISION 1 LOCATION:
ANY PIT, BOX, OR SPACE BELOW GRADE LEVEL, ANY PART OF WHICH IS WITHIN THE DIVISION 1 OR 2 CLASSIFIED LOCATION. EXTENT OF CLASS 1, GROUP D, DIVISION 2 LOCATION:
WITHIN 3 FEET OF ANY EDGE OF PUMP, EXTENDING IN ALL DIRECTIONS. ALSO UP TO 18 INCHES ABOVE GRADE LEVEL WITHIN 10 FEET HORIZONTALLY FROM ANY EDGE OF PUMP.
4. TYPICAL N.E.C. ARTICLE 514 CLASS 1 LOCATION (DISPENSING DEVICE – PITS) EXTENT OF CLASS 1, GROUP D, DIVISION 1 LOCATION:
ANY PIT, BOX, OR SPACE BELOW GRADE LEVEL, ANY PART OF WHICH IS WITHIN THE DIVISION 1 OR 2 CLASSIFIED LOCATION.
5. TYPICAL N.E.C. ARTICLE 514 CLASS 1 LOCATION (DISPENSING DEVICE – DISPENSER) EXTENT OF CLASS 1, GROUP D, DIVISION 2 LOCATION:
WITHIN 18 INCHES HORIZONTALLY IN ALL DIRECTIONS EXTENDING TO GRADE FROM (1) THE DISPENSER ENCLOSURE OR (2) THAT PORTION OF THE DISPENSER ENCLOSURE CONTAINING LIQUID HANDLING COMPONENTS.
6. TYPICAL N.E.C. ARTICLE 514 CLASS 1 LOCATION (DISPENSING DEVICE – OUTDOOR) EXTENT OF CLASS 1, GROUP D, DIVISION 2 LOCATION:
UP TO 18 INCHES ABOVE GRADE LEVEL WITHIN 20 FEET HORIZONTALLY OF ANY EDGE OF ENCLOSURE.
7. TYPICAL N.E.C. ARTICLE 514 CLASS 1 LOCATION (DISPENSING DEVICE – OUTDOOR) EXTENT OF CLASS 1, GROUP D, DIVISION 1 LOCATION:
VAPOR PROCESSING SYSTEM PITS ANY PIT OR BOX BELOW GRADE LEVEL, ANY PART OF WHICH IS WITHIN A DIVISION 1 OR DIVISION 2 CLASSIFIED LOCATION OR THAT HOSES ANY EQUIPMENT USED TO TRANSPORT OR PROCESS VAPORS.
8. TYPICAL N.E.C. ARTICLE 514 CLASS 1 LOCATION (DISPENSING DEVICE – OUTDOOR) EXTENT OF CLASS 1, GROUP D, DIVISION 2 LOCATION:
VAPOR PROCESSING EQUIPMENT LOCATED WITHIN PROTECTIVE ENCLOSURES WITHIN ANY PROTECTIVE ENCLOSURE HOUSING VAPOR PROCESSING EQUIPMENT.
9. TYPICAL N.E.C. ARTICLE 514 CLASS 1 LOCATION (DISPENSING DEVICE – DISPENSER) EXTENT OF CLASS 1, GROUP D, DIVISION 1 LOCATION:
SPACE CLASSIFICATION INSIDE THE DISPENSER ENCLOSURE IS COVERED IN ANSI/UL 87, "POWER OPERATED DISPENSING DEVICES FOR PETROLEUM PRODUCTS."

1. ALL MATERIALS AND EQUIPMENT SHALL BE NEW AND SHALL BEAR THE UNDERWRITERS' LABEL (UL) AND SHALL BE INSTALLED IN THE MANNER FOR WHICH THEY ARE DESIGNED AND APPROVED.
2. ALL DEVICES INSTALLED OUTSIDE OR IN DAMP LOCATIONS SHALL BE APPROVED WEATHERPROOF.
3. ALL WIRE SHALL BE COPPER. ALL WIRE SHALL BE UL LISTED, RATED FOR 600 VOLTS, TYPE THHN/THWN INSULATION, NO. 12 MINIMUM SIZE EXCEPT FOR CONTROLS.
4. PROVIDE SUPPORT FOR ALL FIXTURES AND ELECTRICAL EQUIPMENT TO COMPLY WITH SEISMIC REQUIREMENTS OF THE CALIFORNIA BUILDING CODE.
5. PROVIDE AN ENCLOSURE OF EQUAL FIRE RESISTANT RATING AROUND ALL FIXTURES AND EQUIPMENT INSTALLED IN OR PENETRATING THROUGH FIRE RATED SEPARATIONS.
6. FOR PURPOSES OF CLEARNESS AND LEGIBILITY, THE ELECTRICAL DRAWINGS ARE ESSENTIALLY DIAGRAMMATIC TO THE SIZE AND LOCATION OF EQUIPMENT IS SHOWN TO SCALE WHEREVER POSSIBLE. VERIFY ALL CONDITIONS DATA INFORMATION AS INDICATED ON THE DRAWINGS AND IN THE SPECIFICATIONS SECTIONS WHERE ELECTRICAL WORK INTERFACES WITH OTHER TRADES.
7. WIRING IN JUNCTION BOXES, USED TO FEED SURFACE MOUNTED FIXTURES, ETC., SHALL BE ACCESSIBLE WITHOUT THE REMOVAL OF FIXTURES.
8. SEE ARCHITECTURAL PLANS FOR EXACT LOCATION OF ALL RECEPTACLES AND SWITCHES.
9. PAY ALL COST ASSOCIATED WITH CONSTRUCTION INCLUDING BONDS, INSURANCE, PERMITS AND INSPECTION FEES.



385 NORTH ARROWHEAD AVENUE
SAN BERNARDINO, CA 92415-0184

Project Title:

FLEET MANAGEMENT FUEL TANK REPLACEMENT PROJECT - PHASE I

CIP NUMBER: 15-009

Project No: 4SAN030303

Project Address

Fire Station 53
72734 Baker Blvd. Baker CA

3 Hutton Centre Drive
Suite 200
Santa Ana, CA 92707
(714) 751-7373 Fax(714) 545-8883



421 East Huntington Drive
Monrovia, California 91016
P: 626.930.1383 F: 626.930.1385

Job No: 18035

No.	REVISION	DATE
	BID DRAWINGS	

Drawing Title:

BAKER
Fire Station 53

Revision Date:	
Scale:	1" = 40'
Drawn By:	
Reviewd By:	
Date:	12/18/19
Drawing Size:	24 x 36

Drawing Number

E0.01

09 of 11 Sheets

100% CONSTRUCTION DOCUMENTS

INSTALL EQUIPMENT GREEN GROUNDING
CONDUCTOR, SIZED PER N.E.C. 250-122
IN ALL CONDUITS. GROUND WIRES ARE NO
SHOWN ON DRAWINGS OR IN SYMBOL LIST