

9438 COMMERCE WAY  
ADELANTO, CA 92301

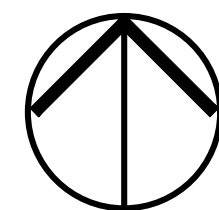


Project Scope  
**Adelanto Detention Center**  
**Generator Replacement**  
 9438 COMMERCE WAY  
 Adelanto, CA 92301  
 Prepared for  
**County of San Bernardino**



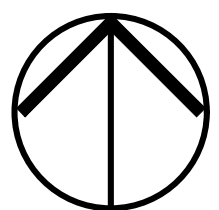
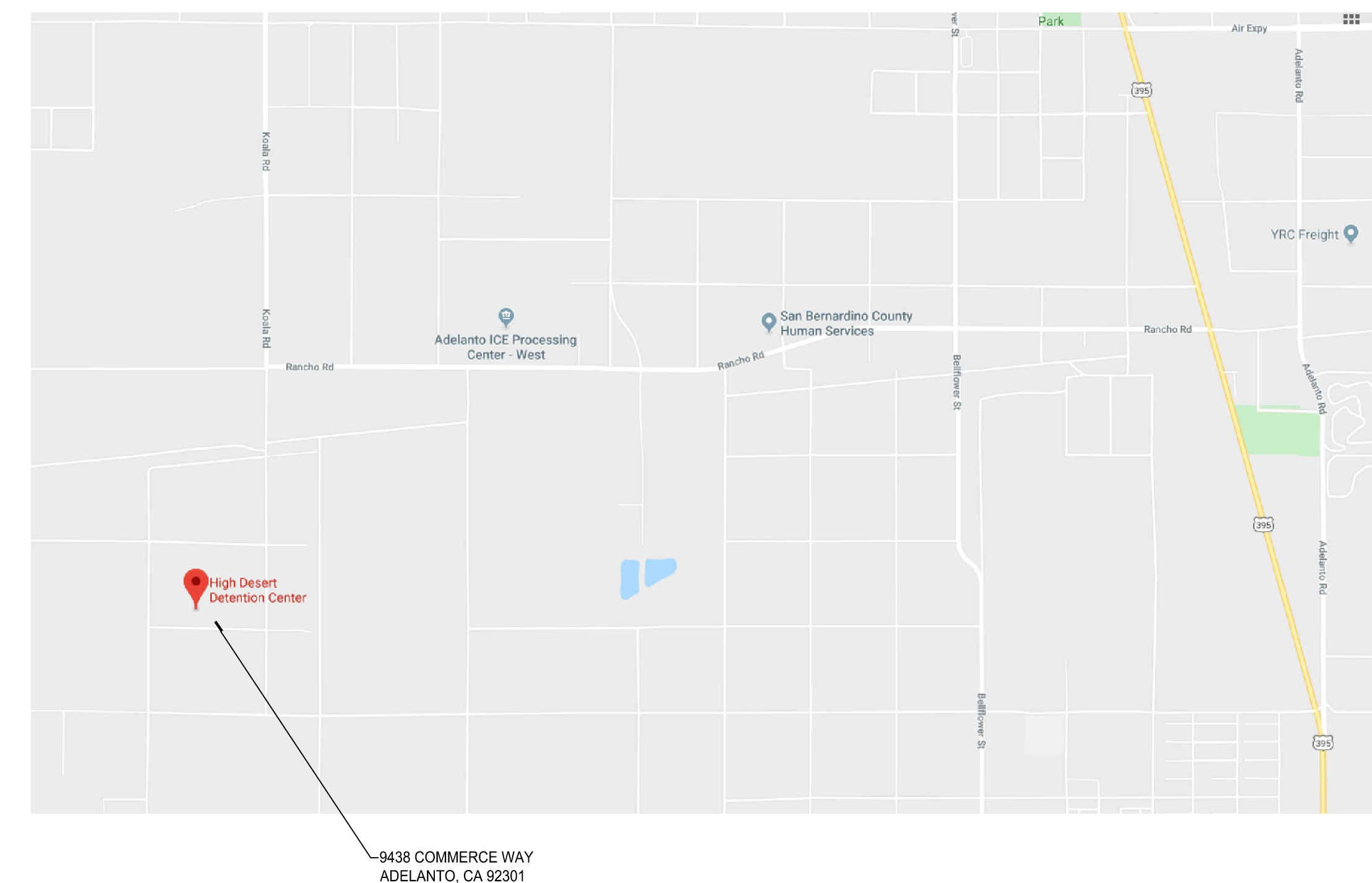
5 W. Hospitality Lane, Suite #100  
 San Bernardino, CA 92408  
 Phone: 909.890.3700  
 Fax: 909.890.3770  
 Email: cadd@designwesteng.com

DESIGN WEST ENGINEERING  
MECHANICAL • ELECTRICAL • ENERGY CONSULTANTS



LOCATION MAP

SCALE: NONE



VICINITY MAP

SCALE: NONE

SHEET INDEX	
Sheet Number	Sheet Title
E-0.0	COVER SHEET
E-0.1	ELECTRICAL LEGENDS & NOTES
E-0.2	SINGLE LINE DIAGRAM & LOAD SUMMARIES
E-1.1	ELECTRICAL SITE PLAN
E-2.1	ELECTRICAL DETAILS
E-2.2	GENERATOR DETAILS

## PROJECT ENGINEER

DESIGN WEST ENGINEERING  
275 W. HOSPITALITY LANE  
SUITE 100  
SAN BERNARDINO, CA 92408

LEONARD MAYA  
E.E. - #19480

## SCOPE OF WORK

CONTRACTOR SHALL FURNISH AND INSTALL NEW 1.250KW STAND-BY DIESEL GENERATOR SET AND RELOCATE EXISTING 900KW SET. NEW 1600A ATS AND PANELBOARD SHALL BE CONTRACTOR FURNISHED AND CONTRACTOR INSTALLED. ALL EQUIPMENT SHALL BE LOCATED AT THE SAN BERNARDINO COUNTY ADELANTO DETENTION CENTER. CONTRACTOR SHALL INCLUDE ALL COST ASSOCIATED WITH INSTALLATION OF NEW GENERATOR AND REMOVAL/INSTALLATION OF RELOCATED GENERATOR. ALL EQUIPMENT AND INSTALLATION MATERIALS SHALL BE INCLUDED IN CONTRACTORS BID. THIS INCLUDES BUT IS NOT LIMITED TO CRANES, MOVING VEHICLES AND EQUIPMENT.



No.	Issue Description	Date
-----	-------------------	------

No.	Revision Description	Date
#1	Revised Switchgear Feeds	8/16/19

Drawn by: JM      Reviewed by: LM

Project No: — — — —

Sheet Titles:

COVER SHEET

Sheet Number:

**E-0.0**



## GENERAL NOTES

1. ALL MATERIALS AND WORKMANSHIP SHALL CONFORM TO THE LATEST CALIFORNIA CODE OF REGULATIONS (CCR), NATIONAL ELECTRICAL CODE EDITION AND ALL APPLICABLE LOCAL CODES AND REGULATIONS.
2. ALL PANELS, SWITCHES, ETC. SHALL HAVE SUFFICIENT CUTTER SPACE AND LUGS IN COMPLIANCE TO UL REQUIREMENTS TO ACCOMMODATE CONDUCTORS SHOWN.
3. WHERE WIRE SIZES ARE INDICATED ON PLANS, FOR INDIVIDUAL CIRCUITS, THE WIRE SIZE INDICATED SHALL APPLY TO THE COMPLETE CIRCUIT, UNLESS OTHERWISE NOTED.
4. CONTRACTOR SHALL VERIFY THE EXACT LOCATION OF MECHANICAL, PLUMBING AND OTHER EQUIPMENT REQUIRING ELECTRICAL CONNECTION PRIOR TO ANY WORK.
5. CONTRACTOR SHALL EXTEND WIRING FROM ALL JUNCTION BOXES, SWITCHES, ETC. AND MAKE FINAL CONNECTION AS REQUIRED TO ALL BUILDING EQUIPMENT REQUIRING ELECTRICAL CONNECTIONS.
6. LOCATION OF WALL MOUNTED SWITCHES ARE SUBJECT TO MODIFICATIONS, AT OR NEAR DOORS, INSTALL SWITCHES ON ONE SIDE OPPOSITE TO DOOR HINGE. VERIFY FINAL HINGE LOCATION IN FIELD PRIOR TO ANY WORK.
7. DRAWINGS ARE DIAGRAMMATIC AND INDICATE GENERAL ARRANGEMENT OF SYSTEMS AND WORK INCLUDED. FOLLOW DRAWINGS IN LAYING OUT WORK AND CHECK DRAWINGS OR OTHER TRADES RELATING TO WORK TO VERIFY SPACE TO WHICH WORK WILL BE INSTALLED. MAINTAIN HEADROOM AND MINIMUM CODE REQUIRED WORK CLEARANCES AT ALL TIMES.
8. CONTRACTOR SHALL COORDINATE THE LOCATION OF ALL WALL OUTLET BOXES FOR SWITCHES, BELL/STROBES, FIRE ALARM PULL STATIONS, RECEPTACLES ETC. WITH CABINETS, FURNITURE, EQUIPMENT ETC., TO AVOID CONFLICT.
9. WHERE ELECTRIC MOTORS OR HEATERS ARE INSTALLED IN HUNG CEILINGS, PROVIDE DISCONNECT SWITCH IN HUNG CEILING WITHIN REACH FROM SERVICE POINT.
10. FURNISH APPROVED EXPANSION FITTINGS WHERE RACEWAY CROSSES BUILDING EXPANSION JOINTS.
11. FURNISH PULL STRING IN EACH RACEWAY RUN OVER 10' IN LENGTH, IN WHICH PERMANENT WIRING IS NOT INSTALLED.
12. NOT MORE THAN THREE LIGHTING OR CONVENIENCE OUTLET CIRCUITS ARE PERMITTED IN ONE CONDUIT. PROVIDE SEPARATE CONDUIT FOR EACH HOMERUN TO THE DRAWING, UNLESS INDICATED OTHERWISE.
13. PROVIDE PULL BOXES WHEREVER NECESSARY TO FACILITATE PULLING OF CONDUCTORS. COORDINATE LOCATIONS OF BOXES WITH OTHER TRADES TO AVOID CONFLICT. PULL BOXES SHALL BE ACCESSIBLE. THE SIZE OF PULL BOX SHALL COMPLY WITH N.E.C. REQUIREMENTS.
14. OUTLET BOXES FOR FIXTURES RECESSED IN HUNG CEILING SHALL BE ACCESSIBLE THROUGH OPENING CREATED BY REMOVAL OF MECHANICAL.
15. SEE FURNISH FURNISH DRAWINGS AND SPECIFICATION FOR ADDITIONAL CONNECTION REQUIREMENTS TO CONTROL SYSTEMS, CONTACTORS, TRANSFORMERS, POWER FOR CONTROL SYSTEM AND RE SWITCHES, TIME CLOCKS, VALVES, STAYS, RELAYS, DUCT SMOKE DETECTOR LOCATIONS, ETC. INDICATED ON CONTROL WIRING DIAGRAMS. ELECTRICAL CONTRACTOR SHALL VERIFY FINAL CONTROL WIRING REQUIREMENTS WITH MECHANICAL AND PLUMBING CONTRACTORS PRIOR TO ANY WORK AND PROVIDE ALL NECESSARY DEVICES AND CONNECTIONS AS REQUIRED.
16. ALL EXTERIOR ELECTRICAL DEVICES AND EQUIPMENT INCLUDING THOSE THAT ARE EXPOSED TO OUTSIDE ENVIRONMENT (UP TO 16") SHALL BE WEATHERPROOF TYPE, NEMA 3P.
17. NO CONDUIT RUNS SHALL BE ALLOWED IN CONCRETE SLABS. ALL CONDUITS WILL BE PLACED ABOVE ACCESSIBLE CEILING SPACES UNLESS SPECIFICALLY INDICATED TO BE UNDERGROUND.
18. LIGHTING, POWER, TELEPHONE AND COMMUNICATIONS OUTLETS SHALL NOT BE PLACED BACK-TO-BACK.
19. WHERE MORE THAN ONE LIGHT SWITCH OCCURS AT SAME LOCATION, SWITCHES SHALL BE MOUNTED IN A MULTIPLE GANG BOX UNDER A SINGLE COVER PLATE. PLATES WITH MORE THAN (3) LIGHT SWITCHES SHALL BE LABELED TO INDICATE THE LIGHT FIXTURES CONTROLLED.
20. DISCONNECT SWITCHES SHALL BE MOUNTED ON INDIVIDUAL SUPPORTS, OR OTHERWISE DIRECTLY ON EQUIPMENT, PROVIDED NO MODIFICATION TO EQUIPMENT IS NECESSARY.
21. ALL ELECTRICAL POWER LIGHTING, TELEPHONE OR SIGNAL WIRING IN FIRE RATED WALL IS TO BE INSTALLED IN A METALLIC CONDUIT SYSTEM.
22. ALL ELECTRIC MATERIAL SHALL BE LISTED BY "UL" FOR THE TYPE OF APPLICATION AND "UL" LABEL SHALL APPEAR ON ALL ELECTRICAL EQUIPMENT.
23. ALL DISTRIBUTION AND CONTROL EQUIPMENT (SUCH AS CB'S, SWITCHES, CONTACTORS, ETC.), TERMINATIONS SHALL BE FULLY RATED PER UL AS FOLLOWS:
  - a. 125A OR LESS : 60% OR MORE.
  - b. MORE THAN 125A : 75% OR MORE.
24. CONDUCTORS SHALL HAVE UNDERWRITERS LABORATORIES, INC.(UL) LISTED, 800 VOLT INSULATION OF TYPE SPECIFIED BELOW OR ELSEWHERE IN THE SPECIFICATIONS. CONDUCTORS SHALL BE COPPER.
  1. BRANCH CIRCUITS - LIGHTING AND POWER.
    - a. #10 AWG AND SMALLER, SOLID WIRE TYPE THW OR THWN/THHN, THHN/THHN FOR DRY LOCATION ONLY.
    - b. #8 AWG TO #2 AWG, STRANDED TYPE THW OR THHN/THHN.
    - c. #1 AWG AND LARGER, STRANDED TYPE THHN.
  2. FEEDERS : TYPE THW OR THWN/THHN, OR THHN.
25. PROVIDE GREEN INSULATED GROUNDING CONDUCTOR IN EACH RACEWAY INCLUDING CONDUITS, PLUG STRIPS, WIREMOLD. SIZE OF GROUNDING SHALL BE IN ACCORDANCE WITH NATIONAL ELECTRIC CODE ARTICLE 250.
26. WIRING METHOD SHALL BE ENT ABOE GROUND AND MOUNTED IN CONCEALED SPACES AND SCHEDULE-40 PVC FOR UNDERGROUND INSTALLATION. USE RIGID WHEN ENCASED IN CONCRETE OR SUSCEPTIBLE TO DAMAGE.
27. USE 10AWG CONDUCTORS FOR 20 AMPERE, 120V BRANCH CIRCUITS LONGER THAN 75 FEET.  
USE 10AWG CONDUCTORS FOR 20 AMPERE, 277V BRANCH CIRCUITS LONGER THAN 200 FEET.

## ABBREVIATIONS

A	AMPERE	NEMA	NATIONAL ELECTRICAL MANUFACTURER'S ASSOCIATION
AF	AMPERE FRAME RATING (CIRCUIT BREAKER)		
AFB	ABOVE FINISHED FLOOR	NEW (N)	NEW, TO BE FURNISHED AND INSTALLED BY CONTRACTOR
AFG	ABOVE FINISHED GRADE		
AFU	AMPERE FUSE RATING (FUSE)	NF	NON-FUSED
AIC	AMPERE INTERRUPTING CAPACITY	NIC	NOT IN CONTRACT
AS	AMPERE SWITCH RATING (FUSE)	N/L	NUMBER LIGHT
AT	AMPERE TRIP RATING (CIRCUIT BREAKER)	NO	NUMBER, NORMALLY OPEN
AWG	AMERICAN WIRE GAUGE	NTS	NOT TO SCALE
BKG	BACKBOARD	OC	ON CENTER
BLDG	BUILDING	OD	OUTSIDE DIAMETER
BWR	BREXEMER	P	POLE
C	CONDUIT	PB	PULL BOX
CB	CIRCUIT BREAKER	PF	POWER FACTOR
CKT	CIRCUIT	PNL	PANEL
CFSO	COMBINATION FIRE SMOKE DAMPER	POC	POINT OF CONNECTION
CO	CONDUIT ONLY	PP	POWER POLE
CONC	CONCRETE	PMR	POWER
CT	CURRENT TRANSFORMER	PVC	POLYVINYL CHLORIDE
CU	COPPER	QAD	QUADRIplex
Q	CERTINERNE	QTY	QUANTITY
DISC	DISCONNECT	REQD	REQUIRED
DISTR	DISTRIBUTION SECTION	REQMT	REQUIREMENT
DIN	DOWN	RCS	RIGID GALVANIZED STEEL
DWG	DRAWING	RMC	RIGID METALLIC CONDUIT
EA	EACH	RM	ROOM
EC	ELECTRICAL CONTRACTOR	RNC	RIGID NONMETALLIC CONDUIT
EM	EMERGENCY	SHT	SHEET
	ELECTRICAL METALLIC TUBING	SN	SOLID NEUTRAL
EXIST. (E)	EXISTING	SPEC	SPECIFICATIONS
EXO	EXTERNAL OPERABLE DISCONNECT	SPDT	SINGLE POLE, DOUBLE THROW
F	FUSE	SPST	SINGLE POLE, SINGLE THROW
FA	FIRE ALARM	SW	SWITCH
FACP	FIRE ALARM CONTROL PANEL	SWBD	SWITCHBOARD
FF	FINISHED FLOOR	TC	TIME CLOCK
FG	FINISHED GRADE	TEL	TELEPHONE
FLA	FULL LOAD CURRENT	TERM	TERMINAL
FLUOR	FLUORESCENT	TP	TEMPORARY POLE
GEN	GENERATOR	TYP	TYPICAL
GFO	GROUND FAULT CIRCUIT INTERRUPTER	UGPS	UNDERGROUND PULL SECTION
GPD	GROUND FAULT PROTECTION	UL	UNDERWRITERS LABORATORY
GND	GROUND	UPS	UNINTERRUPTIBLE POWER SUPPLY
HCA	HAND-OFF-AUTOMATIC	UGN	UNLESS OTHERWISE NOTED
HP	HORSE POWER	V	VOLT, VOLTAGE
HV	HIGH VOLTAGE	VA	VOLT-AMPERE
IDF	INTERMEDIATE DISTRIBUTION FRAME	VFC	VARIABLE FREQUENCY CONTROLLER
IG	ISOLATED/INSULATED GROUND	VPD	VARIABLE FREQUENCY DRIVE
INCAND	INCANDESCENT	W	WATT
ISC	SHORT CIRCUIT CURRENT AVAILABLE IN RMS SYMMETRICAL AMPERES	WH	WATT-HOUR
		WT	WEATHERPROOF
J-BOX	JUNCTION BOX	WT	WEATHERTIGHT
KOML	THOUSAND CIRCULAR MILS	WW	WIREWAY
KW	KILOWATT	XP	EXPOSURE PROOF
KV	KILO VOLT	Z	IMPEDANCE
KVA	KILO VOLT-AMPERE		
LDC	LOCAL DISTRIBUTION CABINET	4W	FOUR-WIRE
LDF	LOCAL DISTRIBUTION FRAME	3W	THREE-WIRE
LCL	LONG CONTINUOUS LOAD	SS	JUNCTION BOX
LGT	LIGHTING		(4 11/16" SQUARED X2 1/8" DEEP)
LV	LOW VOLTAGE	Ø	DIAMETER, PHASE
MFR	MANUFACTURER	#	NUMBER
MAX	MAXIMUM	°	DEGREE CELSIUS
MCC	MOTOR CONTROL CENTER		
MIN	MINIMUM	(E)	EXISTING DEVICE TO REMAIN
MH	MANHOLE / METAL HALIDE	(R)	REMOVE EXISTING DEVICE AND ASSOCIATED CONDUIT AND WIRE
M/M	MAIN AND MAIN SECTION	(E)	REMOVE EXISTING DEVICE AND RELOCATE SHOWN ON PLAN
MULTI	MULTI-METER SECTION		
NV	NOMINAL VOLTAGE	(NL)	NEW LOCATION OF RELOCATED DEVICE
NC	NORMALLY CLOSED		
NEC	NATIONAL ELECTRICAL CODE		

## POWER LEGEND AND SYMBOLS

SYMBOL	DESCRIPTION
	WEATHERPROOF DUPLEX RECEPTACLE OUTLET, CONVENIENCE (20 AMPS, 125 VOLTS) MOUNTED +15" A.F.F. TO BOTTOM OF DEVICE, U.O.N.
	ABOVE CEILING, CONCEALED, JUNCTION BOX, WITH COVER, PER NATIONAL ELECTRICAL CODE (NEC) TABLE 314.16(A)/(B), 4" SQUARE DEEP, WITH PLASTER RING.
	RECESSED WALL MOUNTED JUNCTION BOX, WITH COVER, PER NATIONAL ELECTRICAL CODE (NEC) TABLE 314.16(A)/(B), 4" SQUARE DEEP, WITH PLASTER RING.
	SPECIALTY OUTLET, VERIFY NEMA CONFIGURATION AS NOTED ON PLANS.
	BRANCH PANELBOARD, WALL MOUNTED, SEE PLANS AND SCHEDULE. (SURFACE MOUNTED)
	BRANCH PANELBOARD, WALL MOUNTED, SEE PLANS AND SCHEDULE. (RECESSED MOUNTED)
	MAIN SWITCHBOARD, POWER OR LIGHT, FLOOR, STANDING ENCLOSURE, (SEE SINGLE LINE DIAGRAM AND LOAD SUMMARY)
	DISCONNECT SWITCH (P.L., RATED 600 VOLTS RATED, "F" INDICATES FUSE TYPE, FUSES PER APPROVED MANUFACTURERS SHOP DRAWINGS.
	MAGNETIC MOTOR STARTER H.P. RATED (NUMBER INDICATES NEMA SIZE)
	CONDUIT TURNED DOWN
	CONDUIT TURNED UP
	CONDUIT STUBBED AND CAPPED
	RACEWAY CONCEALED IN WALLS OR ABOVE CEILING
	CONDUIT CONCEALED IN OR UNDER FLOOR, COORDINATE WITH G.C.; OR, BURIAL CONDUIT UNDERGROUND IN SCHEDULE - 40 PVC, U.O.N. VERIFY DEPTH AND TRENCHING WITH G.C.
	DETAIL REFERENCE
	EQUIPMENT REFERENCE
	EXISTING CONDUIT AND WIRING TO REMAIN
	PULL-OUT WIRES AND ABANDON CONDUIT, CUT AND CAPPED FLUSH WALL OR SLAB.
	EXISTING CONDUIT TO REMAIN
	EXISTING CONDUIT AND WIRE TO BE REMOVED
	ELECTRICAL UTILITY PRIMARY
	ELECTRICAL UTILITY SECONDARY
	UTILITY TELEPHONE
	TEMPORARY OVERHEAD CABLING
	HOMERUN TO CIRCUITS #1 AND #3 IN PANEL "A". (CROSSMARKS INDICATE NUMBER OF PHASES AND NEUTRAL, PROVIDE GROUND WIRE.)
	3/4" CONDUIT WITH 2 #12 & 1 #12 GND WIRES, U.O.N.
	3/4" CONDUIT WITH 3 #12 & 1 #12 GND WIRES, U.O.N.
	3/4" CONDUIT WITH 4 #12 & 1 #12 GND WIRES, U.O.N.
	3/4" CONDUIT WITH 5 #12 & 1 #12 GND WIRES, U.O.N.
	3/4" CONDUIT WITH 2 #10 & 1 #10 GND WIRES (#10 INDICATING WIRE SIZE)
	3/4" CONDUIT WITH 3 #10 & 1 #10 GND WIRES (#10 INDICATING WIRE SIZE)
	3/4" CONDUIT WITH 4 #10 & 1 #10 GND WIRES (#10 INDICATING WIRE SIZE)
	3/4" CONDUIT WITH 5 #10 & 1 #10 GND WIRES (#10 INDICATING WIRE SIZE)
	1" CONDUIT WITH 6 #10 & 1 #10 GND WIRES (#10 INDICATING WIRE SIZE)
	GROUND WELL
	EXISTING (DASH INDICATES) ELECTRICAL EQUIPMENT
	MOLDED CASE CIRCUIT BREAKER
	SWITCH AND FUSE ASSEMBLY
	UTILITY COMPANY PULL SECTION LUGS
	GROUNDING CONNECTION TO MAIN BUILDING GROUND SYSTEM, U.O.N.
	GROUNDING CONNECTION AT SWITCHGEAR/DISTRIBUTION BOARD WITH NEUTRAL BONDING.
	IN-LINE UTILITY COMPANY METER
	UTILITY METER WITH CIRCUIT TRANSFORMERS (CT'S) METER
	SOLID STATE DEVICE CONNECTED TO THE POWER DISTRIBUTION SYSTEM
	GROUND FAULT PROTECTION DEVICE CONNECTED TO THE POWER DISTRIBUTION SYSTEM
	TRANSFORMER WITH SECONDARY GROUND
	ON-SITE GENERATOR SET
	CONDUIT WIRING DESCRIPTION PER FEEDER SCHEDULE ON OTHER PLAN
	CONDUIT WIRING DESCRIPTION PER FEEDER SCHEDULE ON OTHER PLAN
	CONCRETE ELECTRICAL PULL BOX WITH LID APPROPRIATE FOR INSTALLATION LOCATION, LID SHALL BE LABELED "ELECTRICAL" OR "COMM" ACCORDING TO USE.

## NOTE TO CONTRACTOR

DO NOT SCALE DRAWINGS

CONTRACTOR SHALL VERIFY PLANS AND EXISTING DIMENSIONS AND CONDITIONS ON THE JOB SITE AND SHALL IMMEDIATELY NOTIFY THE ARCHITECT IN WRITING OF ANY DISCREPANCIES BEFORE PROCEEDING WITH THE WORK OR BE RESPONSIBLE FOR THE SAME.

## APPLICABLE CODES

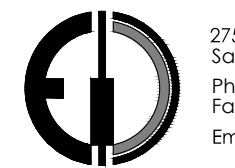
1. 2016 BUILDING STANDARDS ADMINISTRATIVE CODE, PART 1, TITLE 24 C.C.R.
2. 2016 CALIFORNIA BUILDING CODE (CBC) PART 2, TITLE 24 C.C.R. (2015 IBC WITH AMENDMENTS)
3. 2016 CALIFORNIA ELECTRICAL CODE (CEC), PART 2, TITLE 24 C.C.R. (2014 NEC WITH AMENDMENTS)
4. 2016 CALIFORNIA MECHANICAL CODE (CMC), PART 4, TITLE 24 C.C.R. (2015 UMC WITH AMENDMENTS)
5. 2016 CALIFORNIA PLUMBING CODE (CPC), PART 5, TITLE 24 C.C.R. (2015 UPC WITH AMENDMENTS)
6. 2016 CALIFORNIA FIRE CODE, PART 9, TITLE 24 C.C.R. (2015 IFC WITH AMENDMENTS)
7. 2016 CALIFORNIA REFERENCED STANDARDS, PART 12, TITLE 24 C.C.R.
8. 2016 TITLE 19 C.C.R., PUBLIC SAFETY, STATE FIRE MARSHAL REGULATIONS.
9. 2016 CALIFORNIA ENERGY CODE (PART 6, TITLE 24 C.C.R.)
10. 2016 CALIFORNIA GREEN BUILDING STANDARDS CODE (CGSBO), PART 11, TITLE 24 C.C.R.



Project Scope  
Adelanto Detention Center  
Generator Replacement  
9438 COMMERCE WAY  
Adelanto, CA 92301

Prepared for  
County of San Bernardino

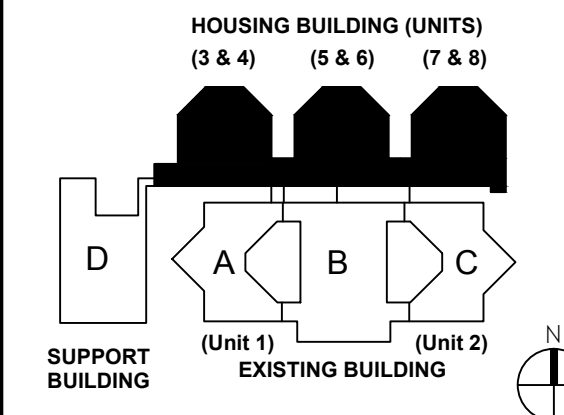
**Engineer**



275 W. Hospitality Lane, Suite #100  
San Bernardino, CA 92408  
Phone: 909.890.3700  
Fax: 909.890.3770  
Email: cadd@designwesteng.com

DESIGN WEST ENGINEERING  
MECHANICAL • ELECTRICAL • ENERGY CONSULTANTS

### Key Plan



## Professional Seal

[illegible]

Drawn by: JM      Reviewed by: LM  
Project No: — — — —

**Sheet Titles:**

## ELECTRICAL LEGENDS & NOTES

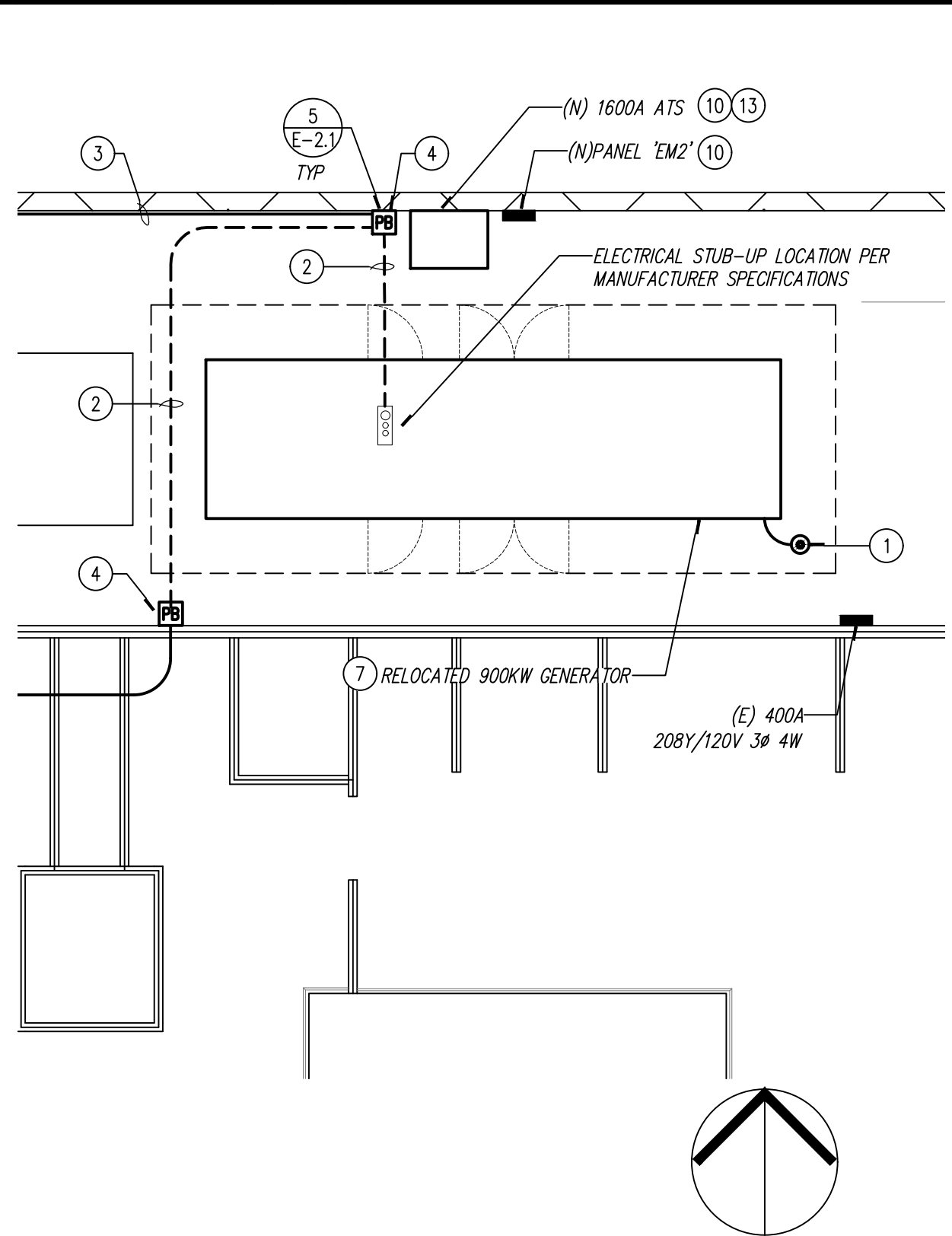
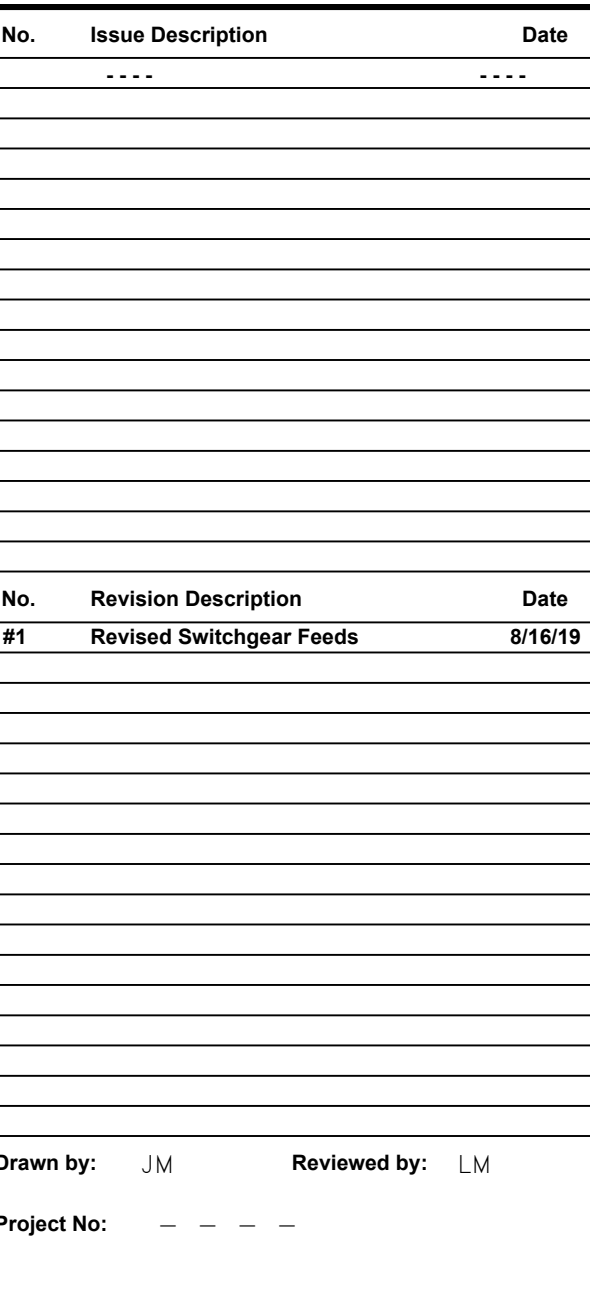
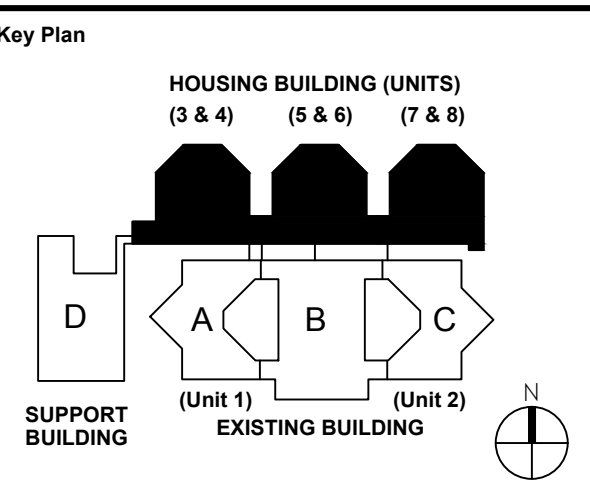
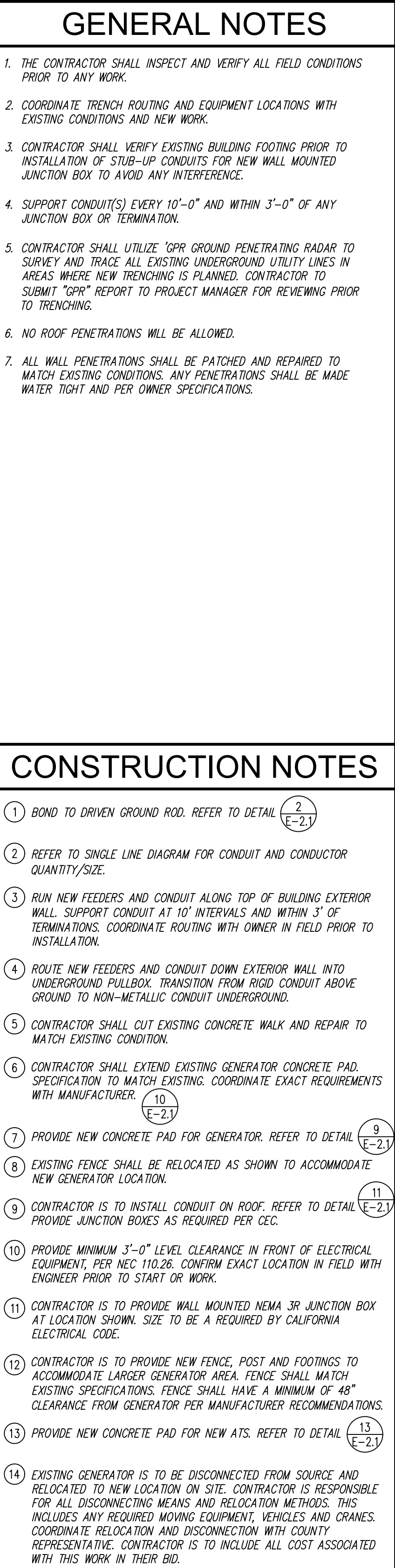
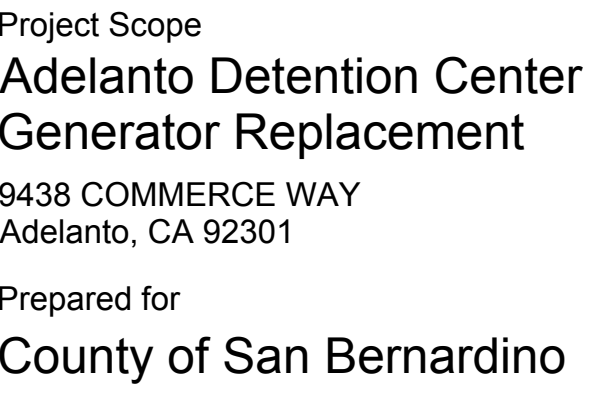
Sheet Number:

# E-0.1









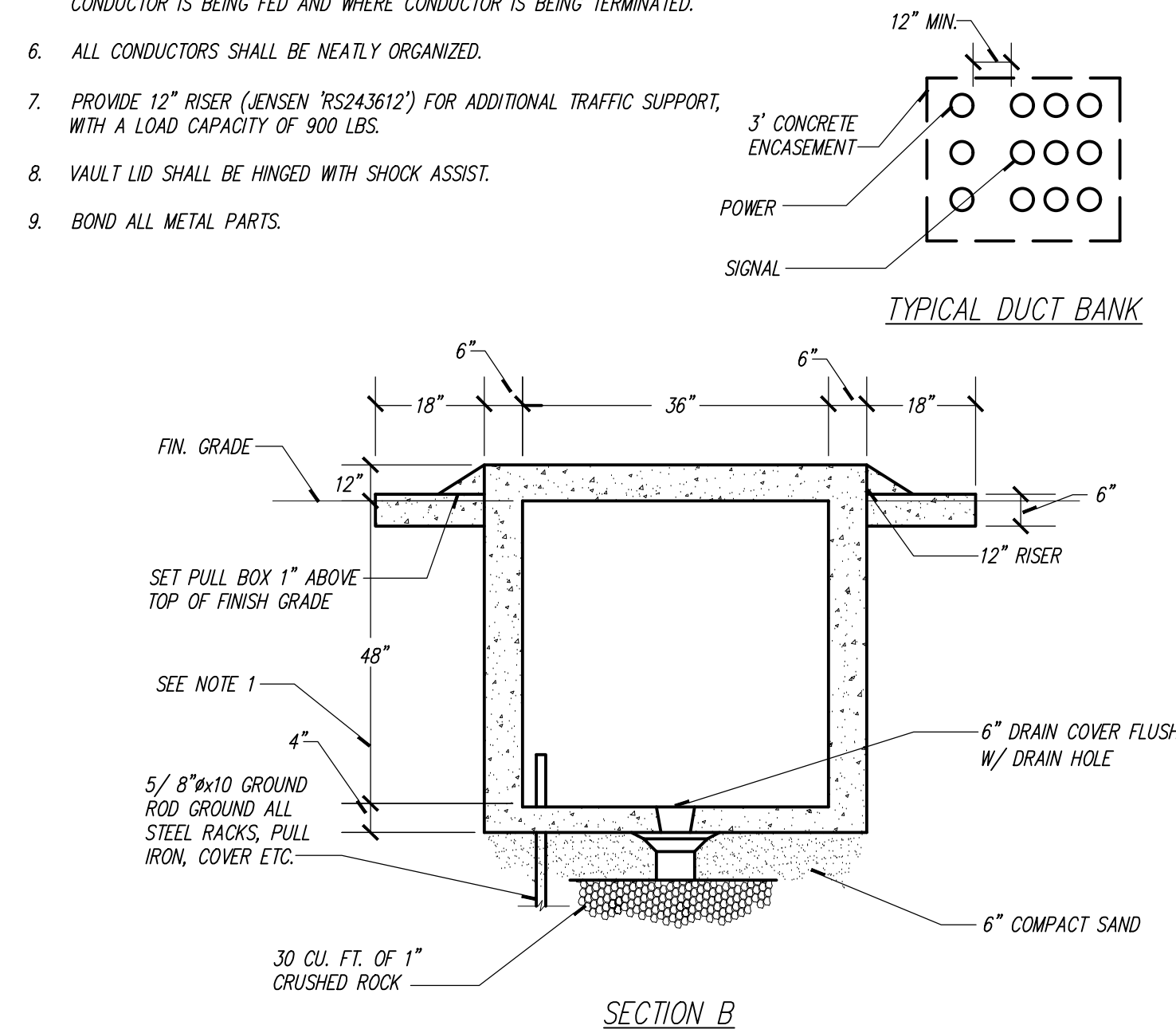




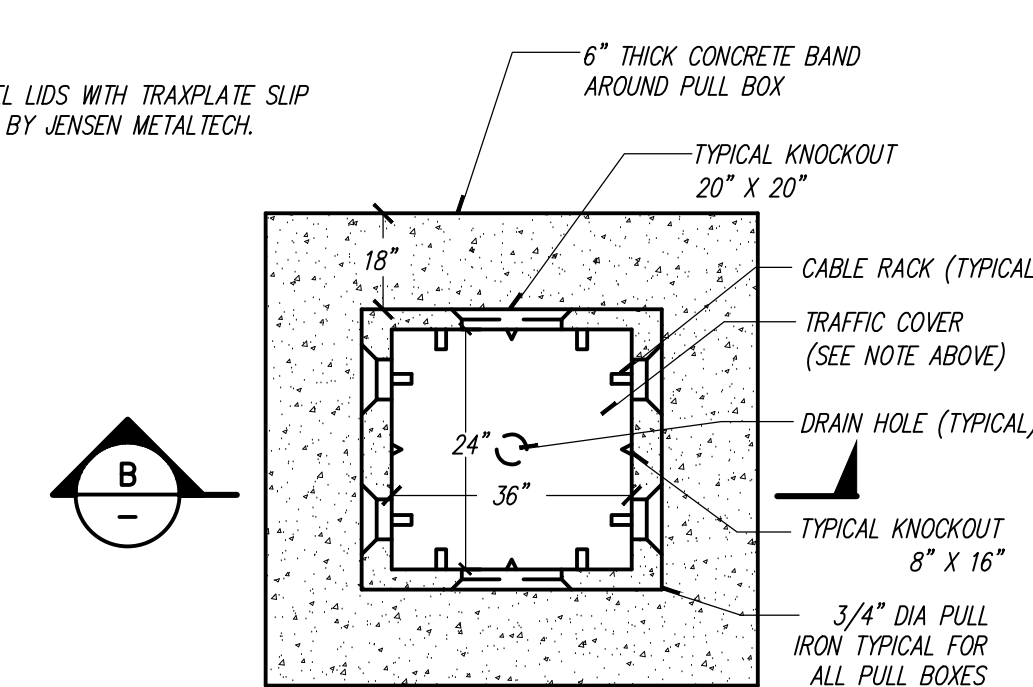
1. PROVIDE OSHA DANGER SIGN, "NO SMOKING WITHIN 50 FEET" SEE SAMPLE ABOVE. SIGN TO BE 20"x24" PRESSURE SENSITIVE VINYL. CHAMPION AMERICA INC. (1-800-527-7000) PN 3062HF. MOUNT ON BOTH SIDES OF GENERATOR ENCLOSURE.
2. PROVIDE OSHA DANGER SIGN, "THIS EQUIPMENT STARTS AND STOPS AUTOMATICALLY" SEE SAMPLE ABOVE. SIGN TO BE 14"x10" CHAMPION AMERICA INC. (1-800-527-7000) SENSITIVE VINYL, PN 5136HF, OR APPROVED EQUIVALENT. MOUNT ON BOTH SIDES OF GENERATOR ENCLOSURE. SIGN IS TO BE INSTALLED SO IT IS VISIBLE TO PEDESTRIANS AT ALL TIMES.

1. DEPTH OF PULLBOX MAY VARY, PROVIDE EXTENSION SECTIONS AS REQUIRED TO CLEAR EXISTING UNDERGROUND UTILITIES.
2. PROVIDE JENSEN PRECAST CONCRETE PULLBOXES, WITH "LOCKUD" LID, FURNISH AND INSTALL CABLE RACKS ON WALL INDICATED, EACH RACK SHALL BE EQUIPPED WITH THREE PORCELAIN CABLE HOLDERS ON A VERTICAL SET, MOUNTING BAR, BOLT HOLES SHALL BE PRECAST, PULLBOXES SHALL BE EQUIPPED WITH STAINLESS STEEL FLAT-HEAD SCREWS AND SELF-CLEANING HOLES. LOOP ALL CABLES AROUND THE LONGEST LENGTH IN THE PULLBOX 2" x 3" PULLBOX SHALL BE QUICKSET SERIES 1000.
3. PROVIDE PULL ROPE FOR ALL SPARE CONDUITS.
4. SEAL OFF AND GROUT ALL CONDUIT KNOCKOUT PENETRATIONS AND SPARE CONDUIT OPENINGS.
5. ALL CONDUCTORS ENTERING UNDERGROUND PULL BOX SHALL BE LABELED WHERE CONDUCTOR IS BEING FED AND WHERE CONDUCTOR IS BEING TERMINATED.
6. ALL CONDUCTORS SHALL BE NEATLY ORGANIZED.
7. PROVIDE 12" RISER (JENSEN "PS243612") FOR ADDITIONAL TRAFFIC SUPPORT, WITH A LOAD CAPACITY OF 900 LBS.
8. VAULT LID SHALL BE HINGED WITH SHOCK ASSIST.
9. BOND ALL METAL PARTS.

3" CONCRETE ENCASMENT  
POWER



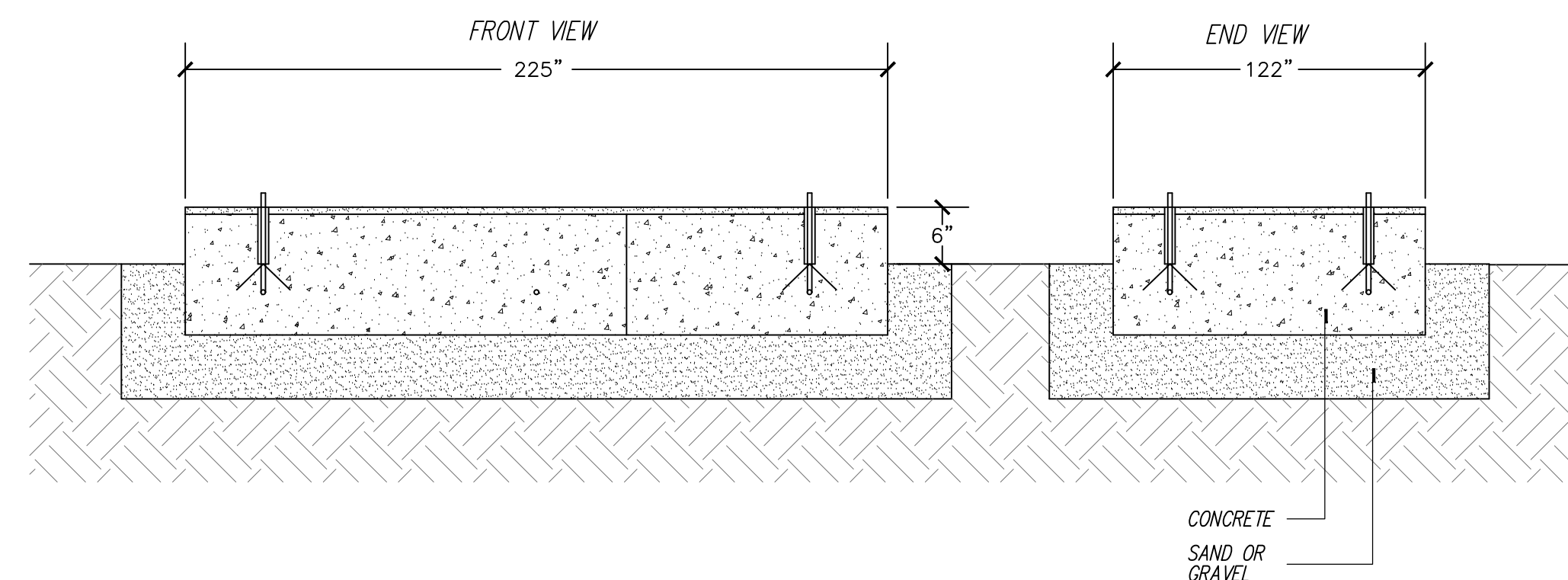
PROVIDE STEEL DIAMOND PLATE STEEL LIDS WITH TRAXPLATE SLIP  
RESISTANT SURFACE MANUFACTURED BY JENSEN METALTECH.



PROVIDE 3/4" CRUSHED ROCK  
6" OUT FROM ALL SIDES OF  
PULLBOX AND 12" DEEP.

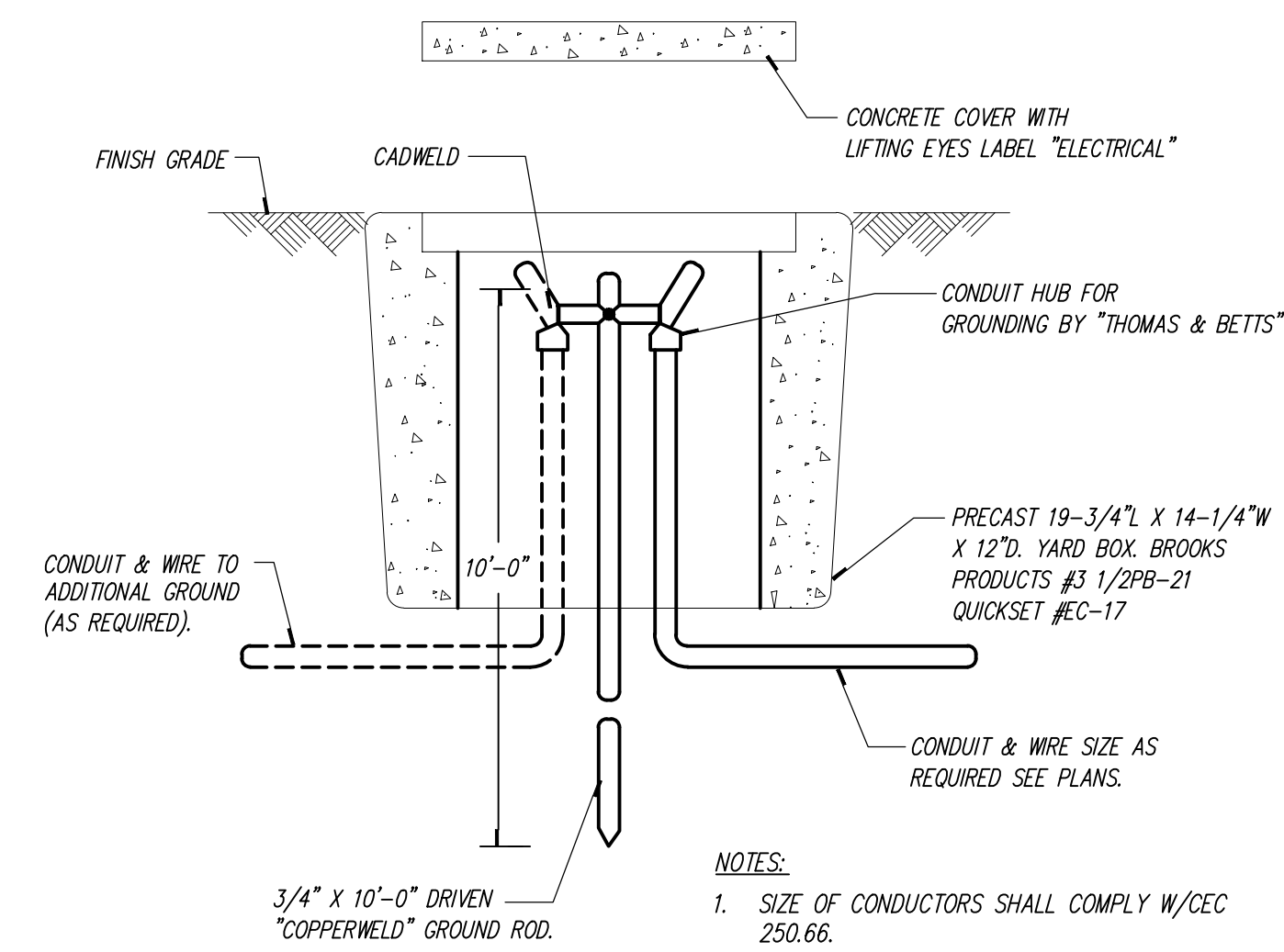
1. PULLBOX TO BE SIZED PER NEC, U.O.N.
2. PROVIDE COVER LABELED WITH "POWER" OR "DATA" DESIGNATION.
3. PULLBOX MUST MEET H2O LOAD REQUIREMENTS IF LOCATED IN DRIVE PATH OF FIRE TRUCKS.

8
---



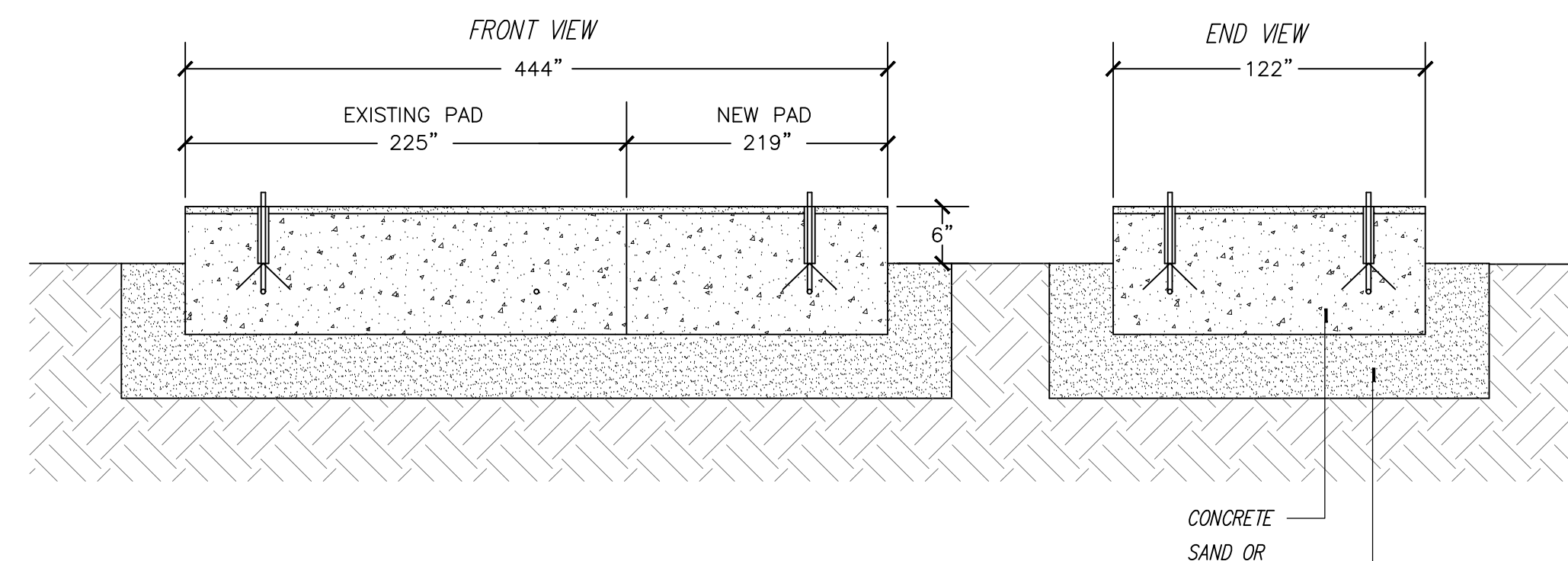
1. CONCRETE PAD 18" DEEP, WITH #4 BARS AT 12" O.C., 4000P.S.I. WITH 10" BED OF SAND OR GRAVEL.
2. BASE FUEL TANK TO BE ATTACHED TO PAD PER MANUFACTURERS INSTALLATION INSTRUCTIONS. CONTRACTOR IS PROVIDE SHOP DRAWINGS FOR APPROVAL.
3. CONDUITS TO STUB OUT FROM PAD. REFER. TO SINGLE LINE DIAGRAM FOR QUANTITY AND SIZES.
4. PROVIDE FUEL CONTAINMENT CURB ALONG PERIMETER OF GENERATOR PAD.

## 1



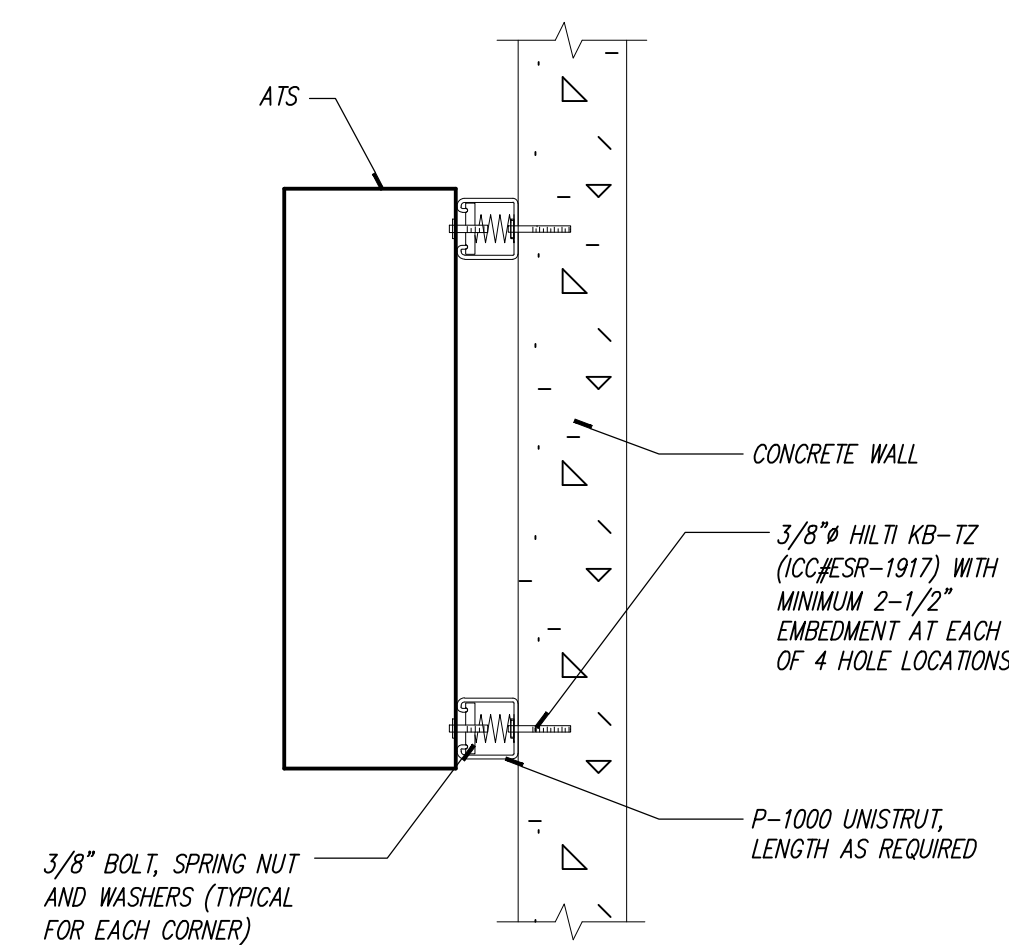
1. SIZE OF CONDUCTORS SHALL COMPLY W/CEC 250.66.
2. CHECK RESISTANCE TO GROUND. IF RESISTANCE EXCEEDS 25 OHMS, INSTALL ADDITIONAL GROUND RODS W/CONDUCTORS AS SHOWN. SEPARATE AT LEAST 6'-0" UNTIL RESISTANCE IS REDUCED TO 25 OHMS OR LESS (CEC 250.56)

9
---

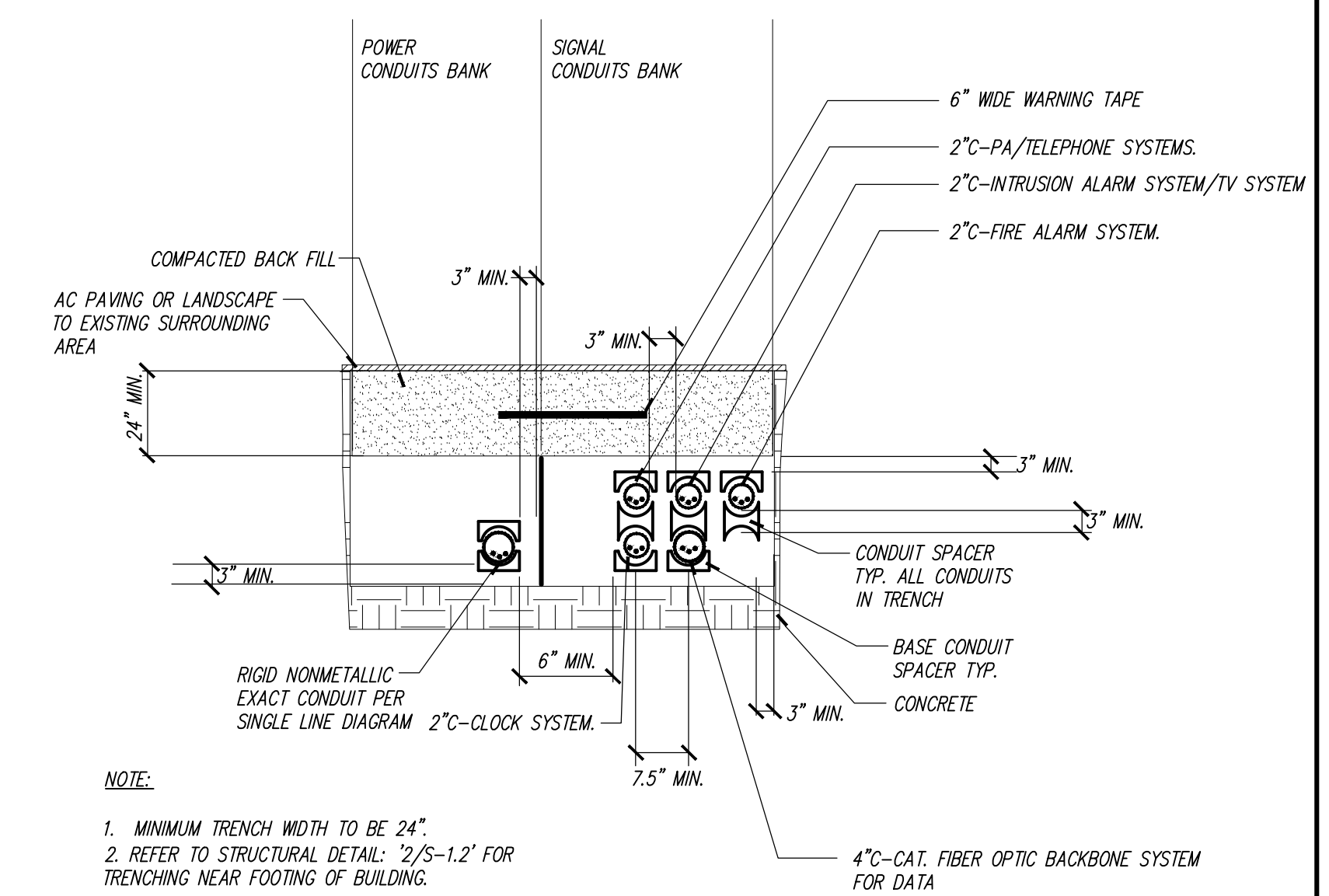


1. CONCRETE PAD 18" DEEP, WITH #4 BARS AT 12" O.C., 4000P.S.I. WITH 10" BED OF SAND OR GRAVEL.
2. BASE FUEL TANK TO BE ATTACHED TO PAD PER MANUFACTURERS INSTALLATION INSTRUCTIONS. CONTRACTOR IS PROVIDE SHOP DRAWINGS FOR APPROVAL.
3. CONDUITS TO STUB OUT FROM PAD. REFER. TO SINGLE LINE DIAGRAM FOR QUANTITY AND SIZES.
4. PROVIDE FUEL CONTAINMENT CURB ALONG PERIMETER OF GENERATOR PAD.

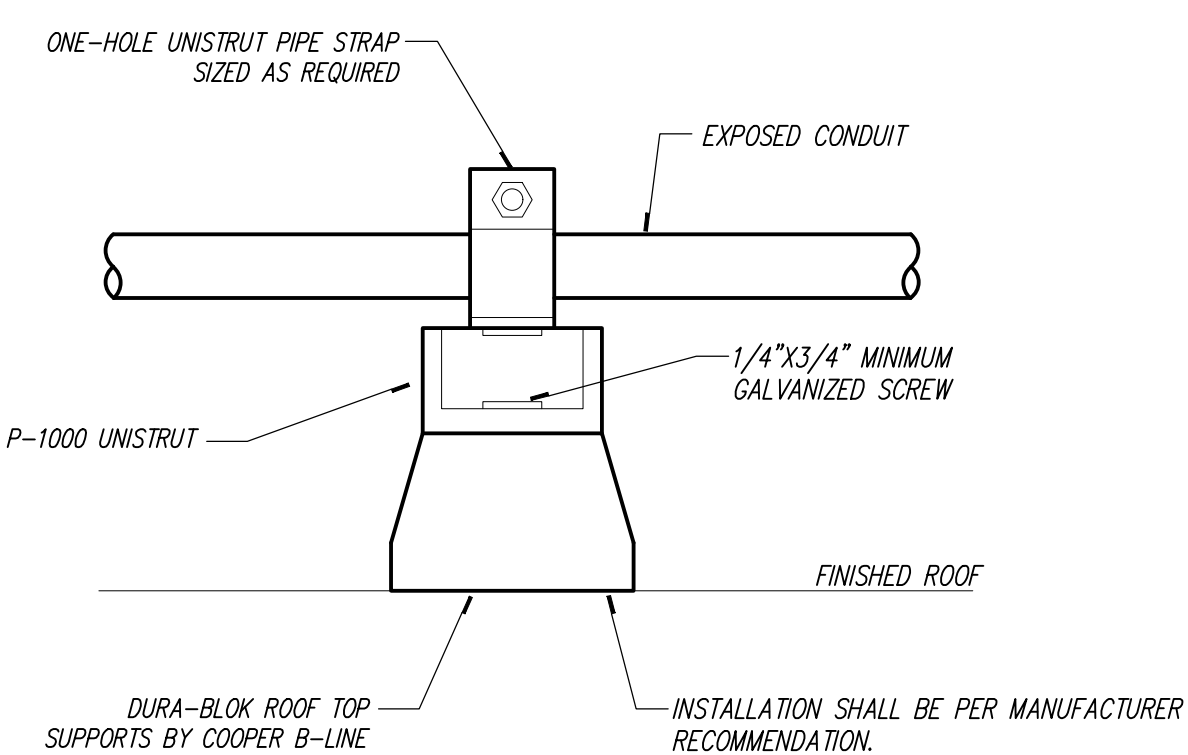
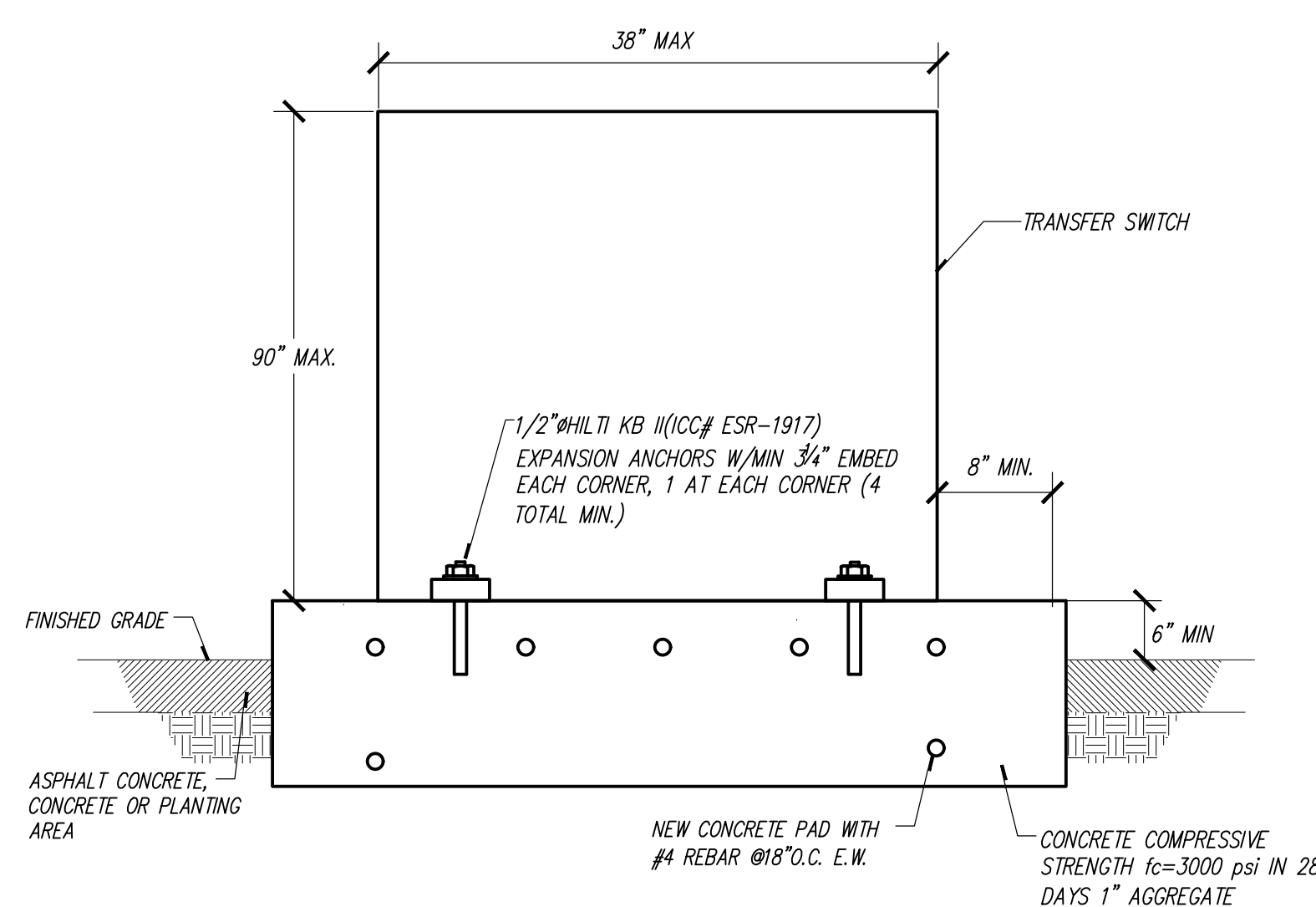
5
---



## 2



10
----



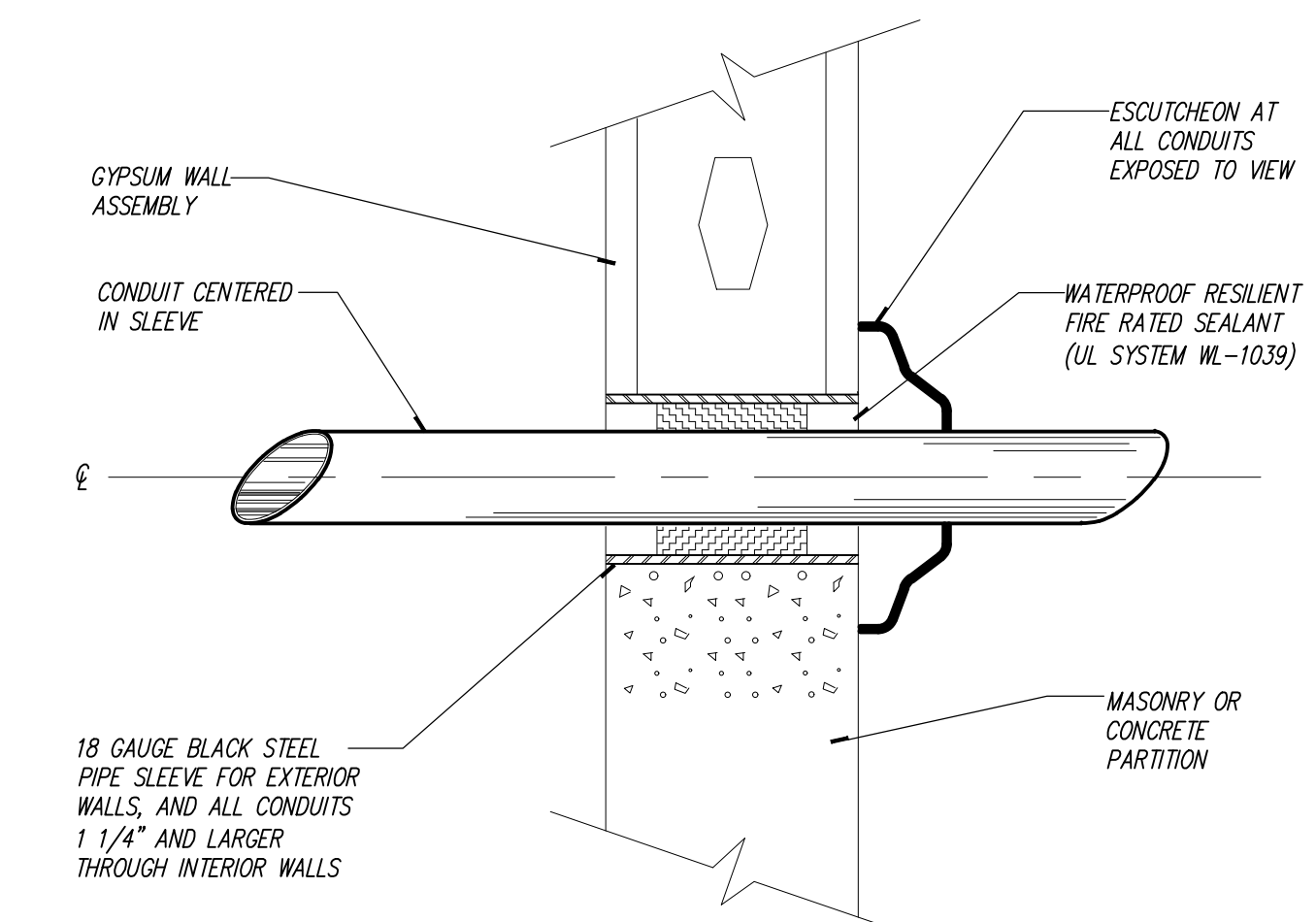
1. COORDINATE THE INSTALLATION OF EXPOSED CONDUITS WITH GENERAL CONTRACTOR TO ENSURE DAMAGE TO ROOF SYSTEM IS PREVENTED.

	6
--	---

STANDBY POWER  
SOURCE LOCATED IN  
GENERATOR YARD  
LOCATED AT NORTH  
EAST CORNER  
OF BUILDING

1. PROVIDE SIGN AT MAIN ELECTRICAL SERVICE TO DESCRIBE THAT BUILDING IS SUPPLIED BY AN ON-SITE GENERATOR WITH A DIRECTORY INDICATING THE LOCATION OF THE DISCONNECT SERVING THE ON-SITE GENERATOR.

## 3



13
----

11
----

	7
--	---

## 4





