



Public Works
Solid Waste Management

Public Hearing Pursuant to Proposition 218 and Amendment to Solid Waste Handling Franchise Agreements

Brendon Biggs

Interim Director

June 9, 2020

www.SBCounty.gov

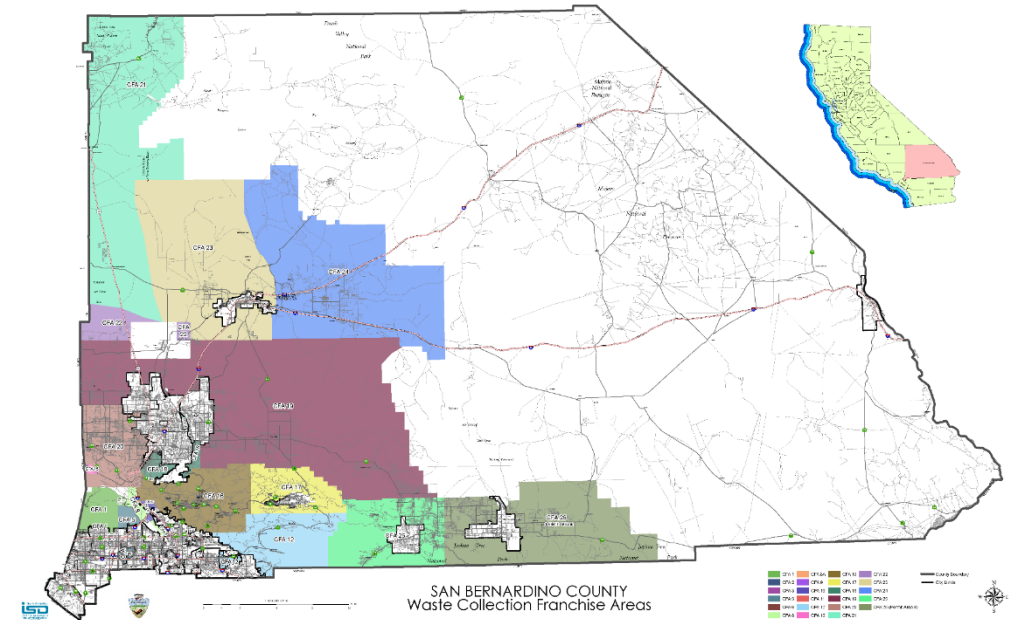
- Amending twenty solid waste handling franchise agreements
 - Includes renewing the current annual rate adjustment methodology
 - Includes amending agreements to add an organic waste recycling program and add/revise rates

- Notices were mailed out giving each owner/resident at least 45 days to submit a written protest to the new rates and annual rate adjustment methodology

- Rate adjustments effective July 1, 2020 reflect an average increase of \$0.69 per month for residential customers.
- Annual Cost of Living Adjustment (COLA)
 - Renewal of the Rate Methodology proposes annual adjustments effective July 1, 2020 through July 1, 2024
- Rate Methodology compares the average annual change in the Consumer Price Index (CPI) and is applied to specific weighted factors to adjust rates
- Rates are region and hauler specific rather than a one-size-fits-all approach

➤ Changes to Franchise Hauler Agreements include:

- Add and update definitions
- Add a Commercial Organic Waste Recycling Program
- Add new voluntary commercial food waste collection service rates in certain Valley area County Franchise Areas
- Revise Clean Mountain service rate in the communities of Crestline, Running Springs, Lake Arrowhead, Green Valley Lake, and Blue Jay to address an increase in County permitting fees
- Add green waste and recycling collection service rates in Bloomington, Devore, and Johnson Valley-Landers



SUMMARY OF PROTESTS RECEIVED

County Franchise Area (CFA)	General Service Area	Total # of Accounts	# Protests needed to stop action (50% +1)	# of Valid Protests Received	Percentage Protests Received	Supervisory District
CFA 1	San Antonio Hts./Mt. Baldy/portions of Lytle Creek	1,727	864.5	1	0.06%	2nd
CFA 2	Sphere of Montclair/upland	1,951	976.5	3	0.15%	4th
CFA 3	Sphere of Chino	953	477.5	4	0.42%	4th
CFA 5	Sphere of Fontana	5,684	2,843.0	1	0.02%	2nd
CFA 6	Bloomington	6,060	3,031.0	4	0.07%	5th
CFA 8	Muscoy/South Cajon Pass/Sphere of San Bernardino	4,075	2,038.5	9	0.22%	2nd/3rd/5th
CFA 9	El Rancho Verde	511	256.5	0	0.00%	5th
CFA 10	Devore/Sphere of San Bernardino	6,867	3,434.5	7	0.10%	2nd/3rd/5th
CFA 11	Sphere of Loma Linda	179	90.5	0	0.00%	3rd
CFA 12	Mentone/Oak Glen/Sphere of Redlands/Forest Falls/Mountain Home/Angelen Oaks	3,321	1,661.5	7	0.21%	3rd
CFA 16	Crestline/Running Springs/Lake Arrowhead/Green Valley Lake/Blue Jay	21,610	10,806.0	105	0.49%	2nd/3rd
CFA 17	Fawnskin, Baldwin Lake, Lake Williams	216	109.0	0	0.00%	3rd
CFA 18	Spring Valley Lake/Oak Hills/ Sphere of Hesperia and Apple Valley	4,917	2,459.5	8	0.16%	1st
CFA 19	Sphere of Victorville, Apple Valley, and Adelanto/Landers/Lucerne Valley	5,163	2,582.5	6	0.12%	1st/3rd
CFA 20	Portions of Phelan and Pinon Hills/Sphere of Adelanto	1,792	897.0	0	0.00%	1st
CFA 21	Trona/Windy Acres/Four Corners/Red Mountain	182	92.0	1	0.55%	1st
CFA 22	Sphere of Adelanto	94	48.0	0	0.00%	1st
CFA 23	Sphere of Barstow/Lenwood-Hinkley	2,616	1,309.0	0	0.00%	1st/3rd
CFA 24	Yermo/Daggett/Newberry Springs	1,180	591.0	0	0.00%	1st/3rd
CFA 25	Joshua Tree/Sphere of Yucca Valley/Morongo Valley	4,346	2,174.0	13	0.30%	3rd
Totals		73,444		169	0.23%	