



Public Works
Solid Waste Management Division

COUNTY OF SAN BERNARDINO
BOARD OF SUPERVISORS WORKSHOP
SEPTEMBER 1, 2020



WORKSHOP TOPICS

- Landfill Operations Overview
- Landfill Life Expectancy
- SWMD Financing
- Safety Enhancements
- Operational Efficiencies
- New Legislation
- Franchise Hauler Agreements
- Waste Disposal Agreements





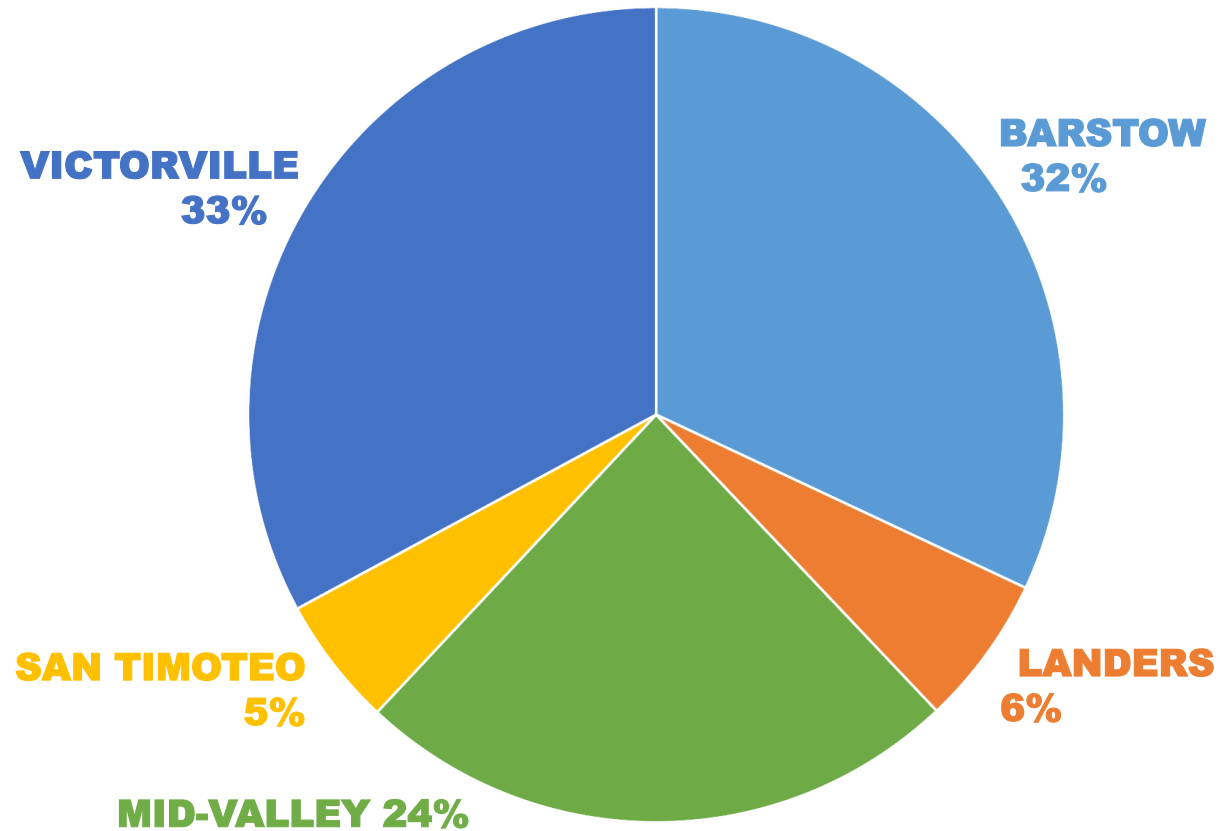
Public Works

LANDFILL LIFE EXPECTANCY



The available airspace at the County's landfills could fill over 300 Rose Bowl Stadiums with a projected life of more than 80 years.

PERCENTAGE OF SYSTEM-WIDE CAPACITY BY SITE



SYSTEM-WIDE REMAINING CAPACITY –

- 236 MILLION CUBIC YARDS OF AIRSPACE

VICTORVILLE

- Receives 16% of the annual waste disposed.
- Remaining airspace is 77.4 million cubic yards.

SAN TIMOTEO

- Receives 13% of the annual waste disposed.
- Remaining airspace is 11 million cubic yards.

BARSTOW

- Receives 3% of the annual waste disposed.
- Remaining airspace is 75.8 million cubic yards.

LANDERS

- Receives 3% of the annual waste disposed.
- Remaining airspace is 14 million cubic yards.

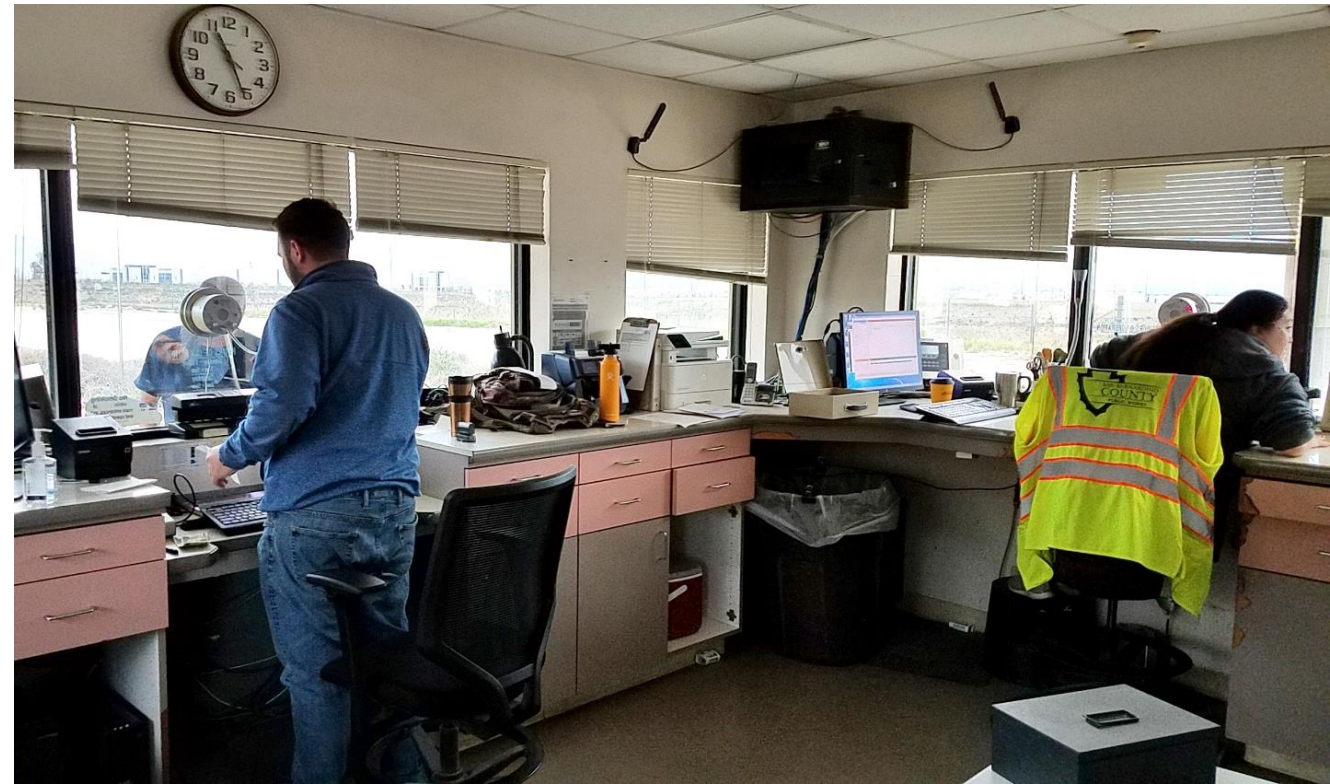
MID-VALLEY

- Receives 65% of the annual waste disposed.
- Remaining airspace is 57.8 million cubic yards.
- Future Unit 4 capacity is 33 million cubic yards.
- Future Unit 5 capacity is 21.5 million cubic yards.

Continuation of Page 5 Information Due to Slide Animation

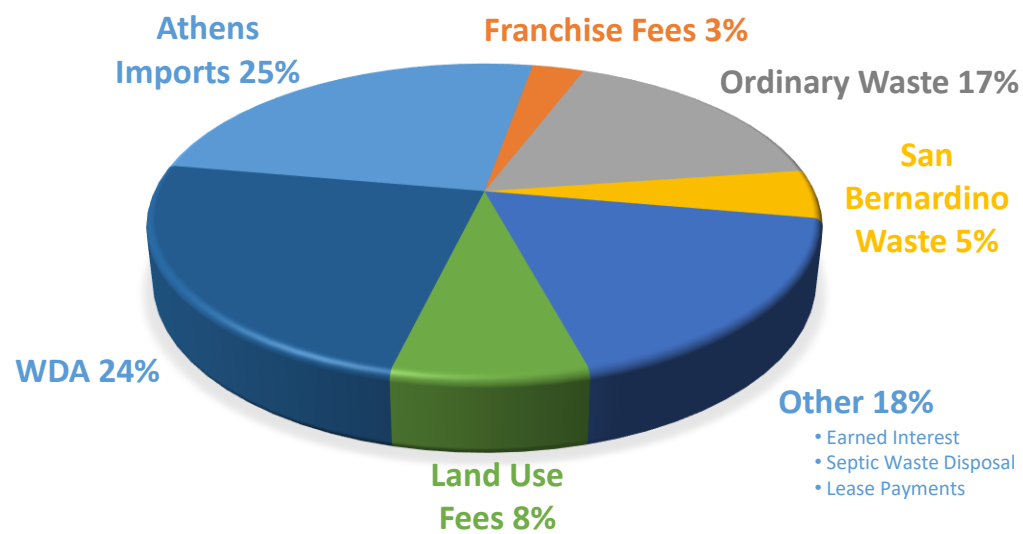
SWMD FINANCING

- Enterprise Fund
- Financed by fee revenue



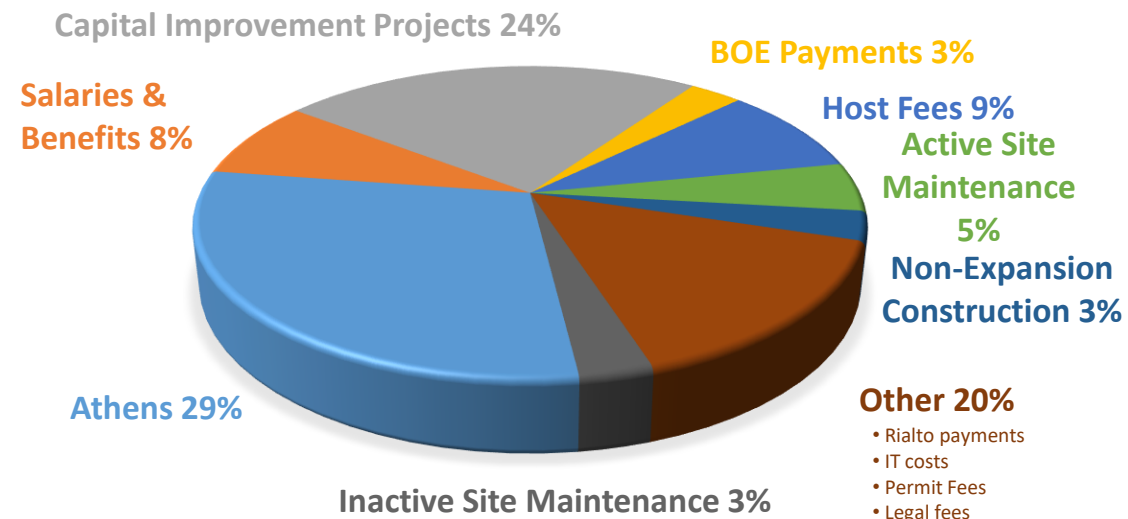
SWMD FINANCING - FY 18/19 - REVENUE VS EXPENSES

FY 18/19 REVENUE



Revenues = \$97,000,000

FY 18/19 EXPENDITURES

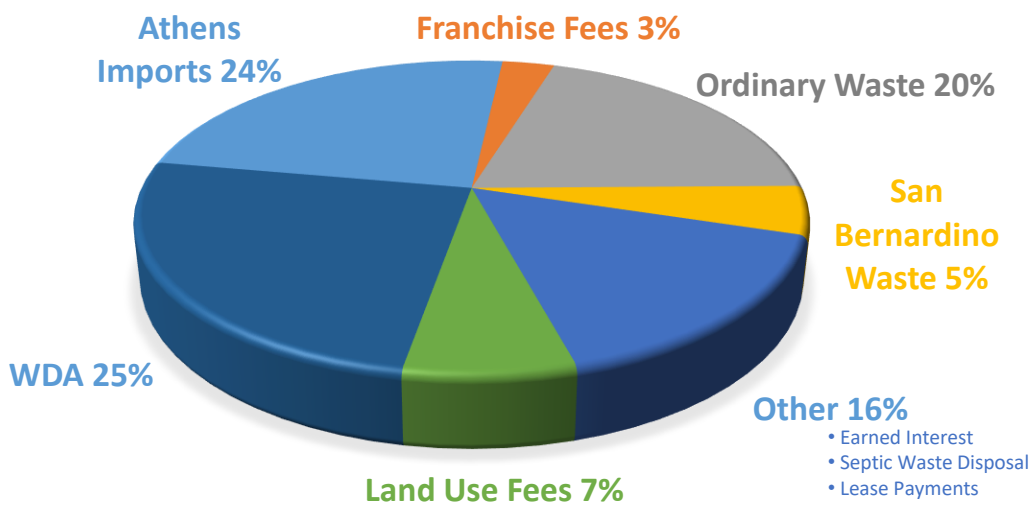


Expenses = \$90,000,000

Available Reserves as of June 30, 2019 was \$152M

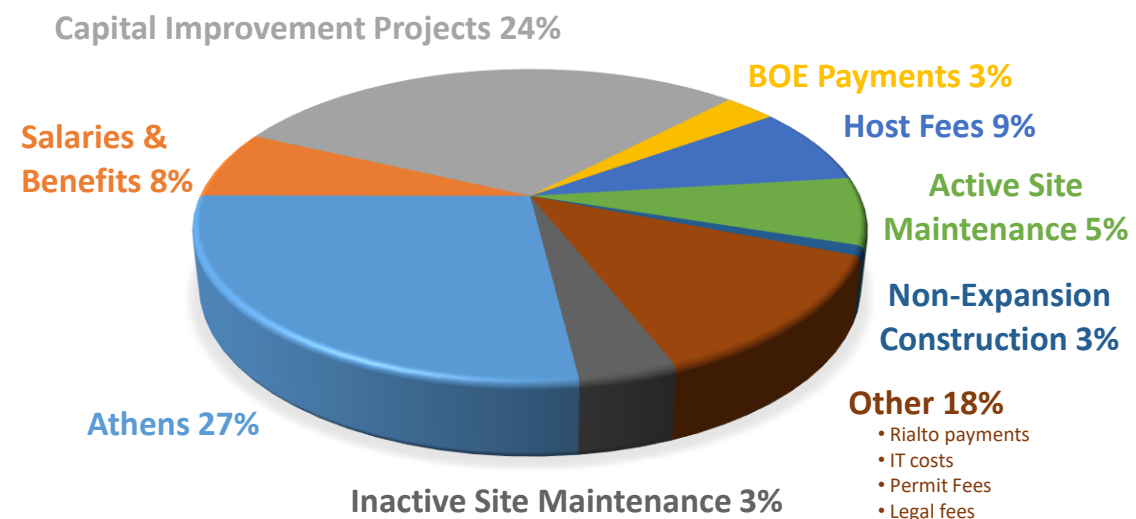
SWMD FINANCING - FY 19/20 - REVENUE VS EXPENSES

FY 19/20 REVENUE



Revenues = \$99,000,000

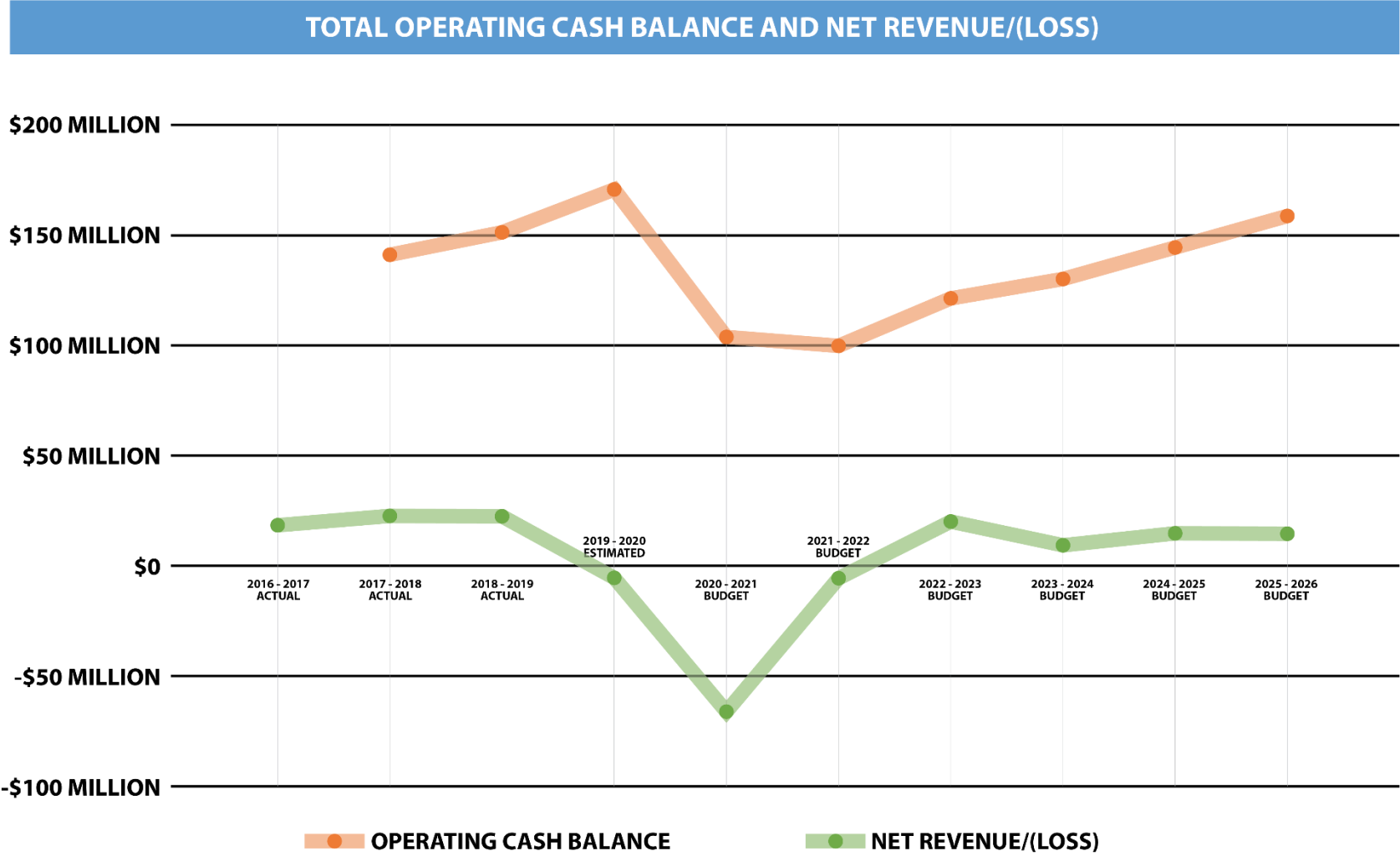
FY 19/20 EXPENDITURES



Expenses = \$103,000,000*

*Increased expenditures for FY 19/20 are contributed to the rare occurrence of three landfill liner construction projects occurring during the same time period.

Available Reserves as of June 30, 2020 was \$171M



Periods of increased reserves, followed by increase in costs due to planned capital improvement projects, which lowers reserves until projects are completed and reserves build back up.

Expenditures may exceed revenues in certain years due to capital projects. Cash reserves have been accumulated in previous years for this reason.

Current Construction Projects

- Two Construction Projects currently in progress; estimated cost of \$42M
 - Liner construction at Mid-Valley and San Timoteo Landfills

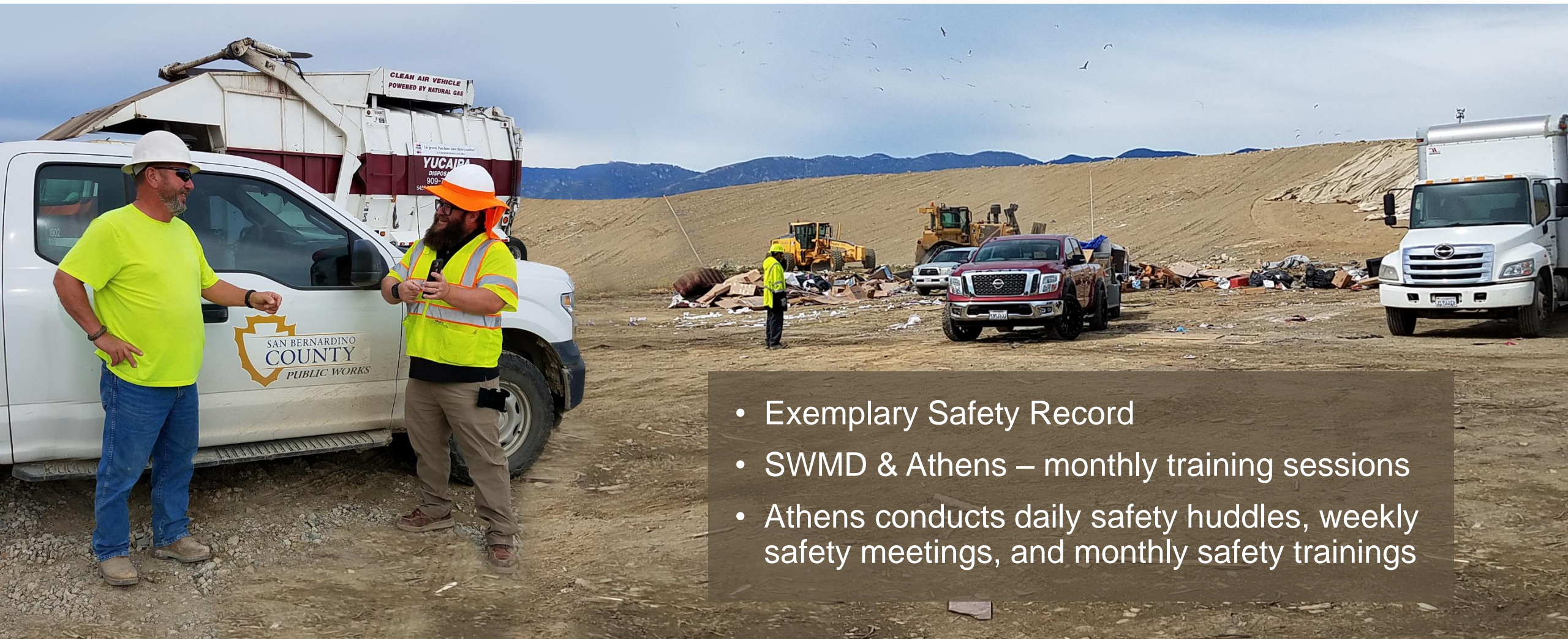
Planned Construction Projects

- Nine Projects over the next five years; estimated cost of \$80M:
 - Barstow Expansion
 - Colton Final Closure
 - Landers Expansion
 - Landers Landfill Gas System
 - San Timoteo Scalehouse Improvements
 - San Timoteo Entrance/Access Road Improvements
 - Mid-Valley Expansion Ph. 2
 - Mid-Valley Expansion Ph. 3
 - Heaps Peak Slope Repair



SAFETY ENHANCEMENTS - SAFETY TRAINING

Page 11



- Exemplary Safety Record
- SWMD & Athens – monthly training sessions
- Athens conducts daily safety huddles, weekly safety meetings, and monthly safety trainings

Implemented New Safety Measures as recommended in the Blue Ridge Services study:

- Increased distance between equipment and vehicles
- Added more safety spotters directing vehicles
- Increased traffic control and signage





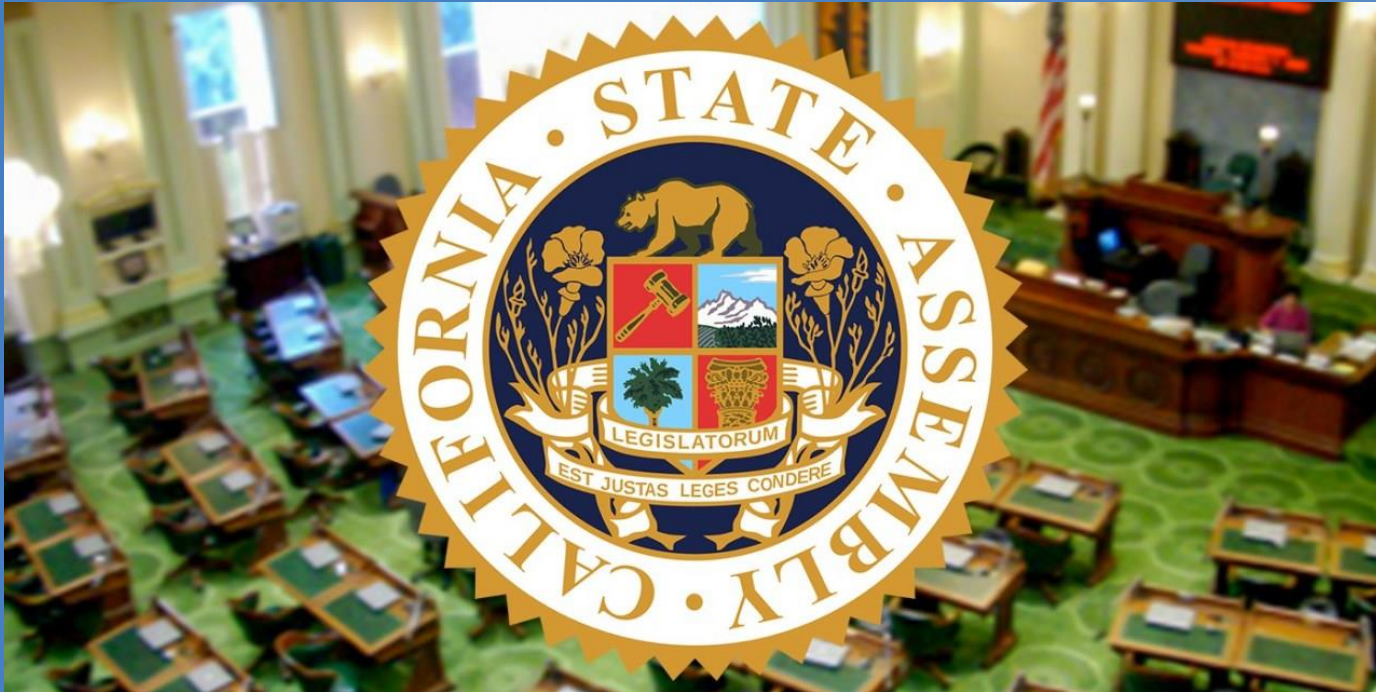
Recommendations in the Blue Ridge Services study:

- Requirement to perform full re-builds on heavy equipment and replace equipment at set intervals (included in Athens' Amendment No. 2 approved 2/11/20)
- Current negotiations with Athens focused on operational efficiencies to maximize airspace (future amendment with Athens)

NEW STATE LEGISLATION

Page 14

- AB1826 - Mandatory Commercial Organics Recycling Law
- SB1383 - Organic Waste Methane Emissions Reductions



AB1826 – Mandatory Commercial Organic Waste Recycling Law

- Requires qualifying businesses and multi-family dwellings generating 4 cubic yards or more of total waste to arrange for organic recycling services
- Includes schools, hospitals, grocery stores, restaurants, and residential dwellings with 5+ units
- State-wide goal of 50% reduction in organics disposal from 2014 levels by 2020 which is currently under evaluation by the State
- If not met, organic recycling requirements may be extended to generators of 2 cubic yards or more of total waste
- County is responsible for having an organic waste recycling program which includes education and outreach to affected businesses and monitoring and reporting organics recycling efforts to the State





SB1383 – Organic Waste Methane Emissions Reductions Law of 2016

- Impacts all generators of organic waste, including residential
- 50% reduction statewide in organics disposal by 2020 and 75% by 2025
- 20% recovery of edible food by 2025
- Final Regulations have not been adopted. Regulations will go into effect January 1, 2022



SB1383 – Organic Waste Methane Emissions Reductions Law of 2016

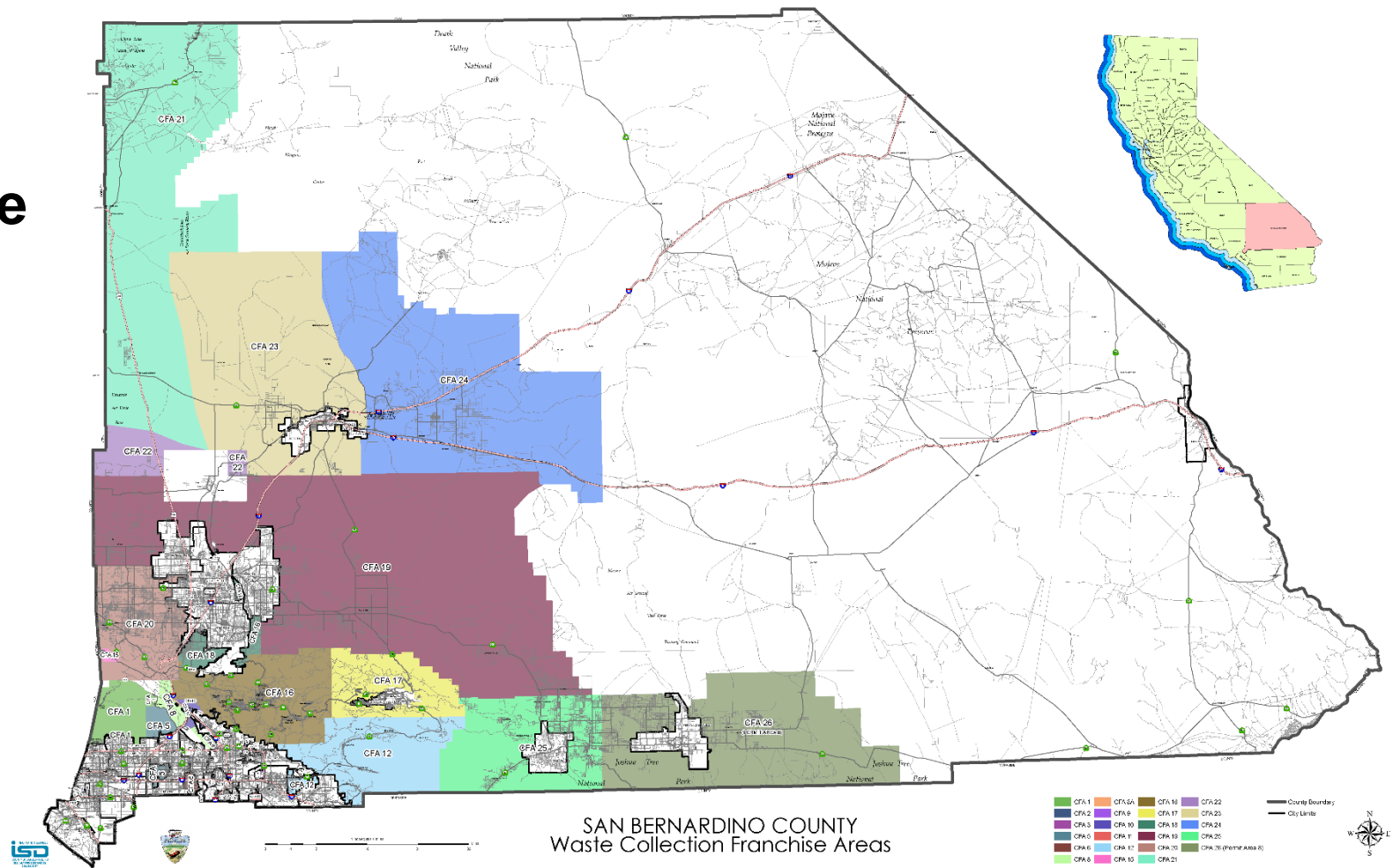
- Some areas currently without mandatory service will be required to have collection services
- Overall organic program implementation will result in increased costs to generators
- County is currently working with our franchise haulers and our consultant to develop a SB1383 plan
- Potential for some unincorporated areas to receive waivers for all or some of the requirements based on low population or high elevation (above 4,500 feet), if approved by CalRecycle

SB 1383 REQUIREMENTS FOR COUNTY

- Provide Organics Collection Services
- Adopt Ordinances and Policies
- Inspections and Enforcement
- Establish Edible Food Recovery Program
- Procure Recycled Organic Products
- Conduct Education and Outreach to Community by:
 - Provide information in franchise hauler newsletters
 - Social Media/Webistes
 - Community Workshops
 - Prop 218 hearing notices for proposed changes in collection service rates

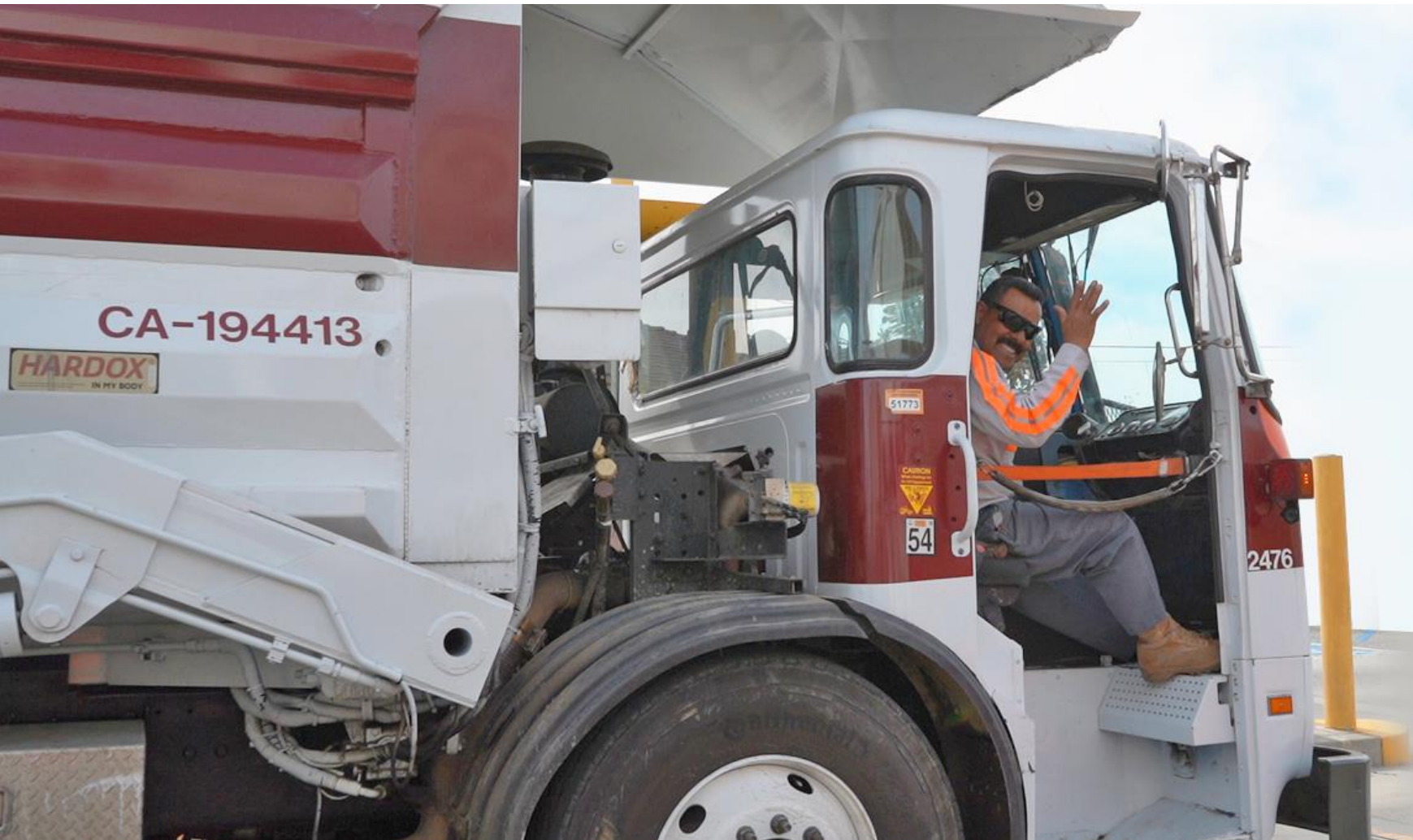


20 Franchise Hauler Collection Areas



FRANCHISE HAULER AGREEMENT AMENDMENTS

Page 20



- SWMD worked with the haulers to develop amendment language to the agreements to address AB1826
- The amendments were approved by the Board June 9, 2020
- SWMD is working with HF&H Consultants on future amendments to address SB 1383

WASTE DISPOSAL AGREEMENTS (WDAs) WITH 15 CITIES/TOWNS

Page 21



WDAs

- Originally 15-year agreements, which started in 1997
- Obligated the cities/towns to deliver their waste to the County's Disposal System in exchange for a reduced disposal rate

WDA Cities/Town include:

- | | | |
|-----------------|-----------------|--------------------|
| • Adelanto | • Fontana | • Rialto |
| • Apple Valley | • Grand Terrace | • Twentynine Palms |
| • Barstow | • Hesperia | • Victorville |
| • Big Bear Lake | • Highland | • Yucaipa |
| • Colton | • Loma Linda | • Yucca Valley |

WASTE DISPOSAL AGREEMENTS (WDAs) WITH 15 CITIES/TOWNS

Page 22



- The Board approved extensions to the WDAs in 2012 and again in 2016
- Current WDAs expire June 30, 2021
- SWMD is working on continuing our partnerships with the Cities/Towns and collaborating on extending the agreements

WASTE DISPOSAL AGREEMENTS (WDAs) WITH 15 CITIES/TOWNS

Page 23

Benefits to the County and the Cities:

- Cities are indemnified
- County is able to keep the waste in the disposal system which helps out financially and helps keep the gate rate lower
- Having other disposal agreements to bring waste into our disposal system also helps keep the WDA rate lower



Moving forward in the future:

- SWMD will continue to be proactive at adapting to the evolving changes in the waste industry
- Explore innovative and advanced ideas to manage the waste in an efficient and environmentally friendly manner



