

# REDISTRICTING SAN BERNARDINO

## COMMISSION MAP 3

DRAFT

	District 1	District 2	District 3	District 4	District 5
2020 Census Count*	445,485	428,010	440,921	430,528	435,208
Deviation #	9,455	-8,020	4,891	-5,502	-822
Deviation %	2.2%	-1.8%	1.1%	-1.3%	-0.2%
2010 Census Count	407,602	404,982	410,988	401,885	409,716
2019 CVAP*	267,918	279,144	300,926	271,173	241,851
2010 CVAP	235,838	235,142	271,256	231,039	202,617

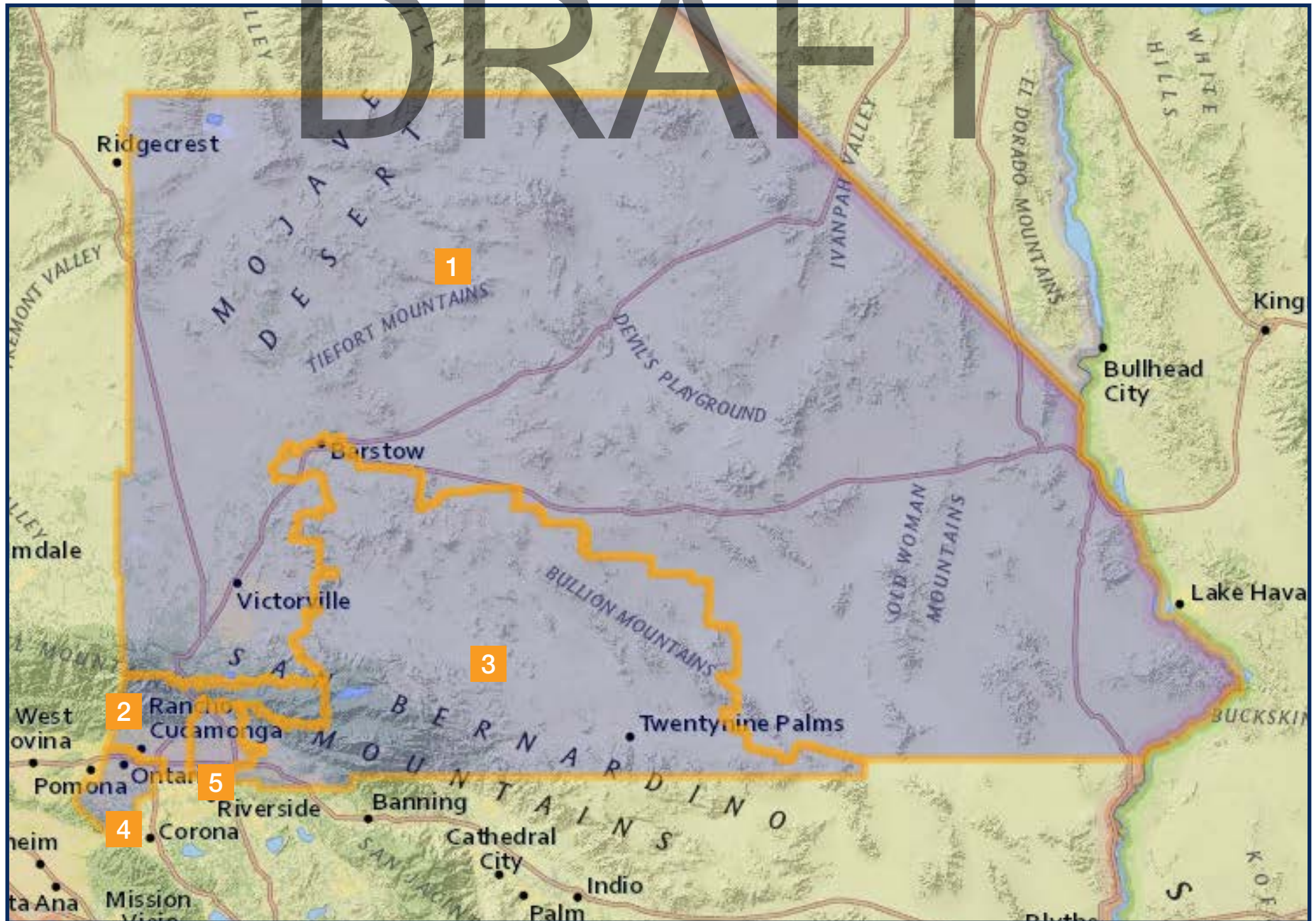
### Notes

- Silverwood is split between Districts 1 and 2 along Pilot Rock Ridge Rd and Pilot Rock Truck Trail
- The Northern section of West Cajon Valley is split between Districts 1 and 2 along Census geography
- Devore is split between Districts 3 and 5 along Deercrest Rd and Census geography
- Glen Helen is split between Districts 3 and 5 along the 15 Freeway
- The Eastern section of Wonder Valley is split between Districts 1 and 3 along Census geography
- Upland is split between Districts 2 and 4 along W Foothill Blvd
- Fontana is split between Districts 2 and 5 along Sierra Ave to Jurupa Ave, then Jurupa Ave to Juniper Ave, then Juniper Ave to Boyle Ave, then Boyle Ave to Cypress Ave, then Cypress Ave to the 10 Freeway, then the 10 Freeway to Sierra Ave, then Sierra Ave to the 15 Freeway
- San Bernardino is split between Districts 3 and 5 along the 10 Freeway in the South and then again along Tippecanoe Ave to E Base Line St, then E Base Line St to N Waterman Ave, then N Waterman Ave to Arrowhead Rd, the Arrowhead Rd to Census geography, then Census geography to N Waterman Ave/Rim of the World Hwy, then Rim of the World Hwy to Arrowhead Springs Rd, then Arrowhead Springs Rd to Census geography, then Census geography to Old Waterman Canyon Rd, then Old Waterman Canyon Rd to Census geography, then Census geography to Rim of the World Hwy
- Colton is split between Districts 3 and 5 along the 215 Freeway to the 10 Freeway

\*Adjusted for prisoner reallocation

REDISTRICTING SAN BERNARDINO  
COMMISSION MAP 3

DRAFT

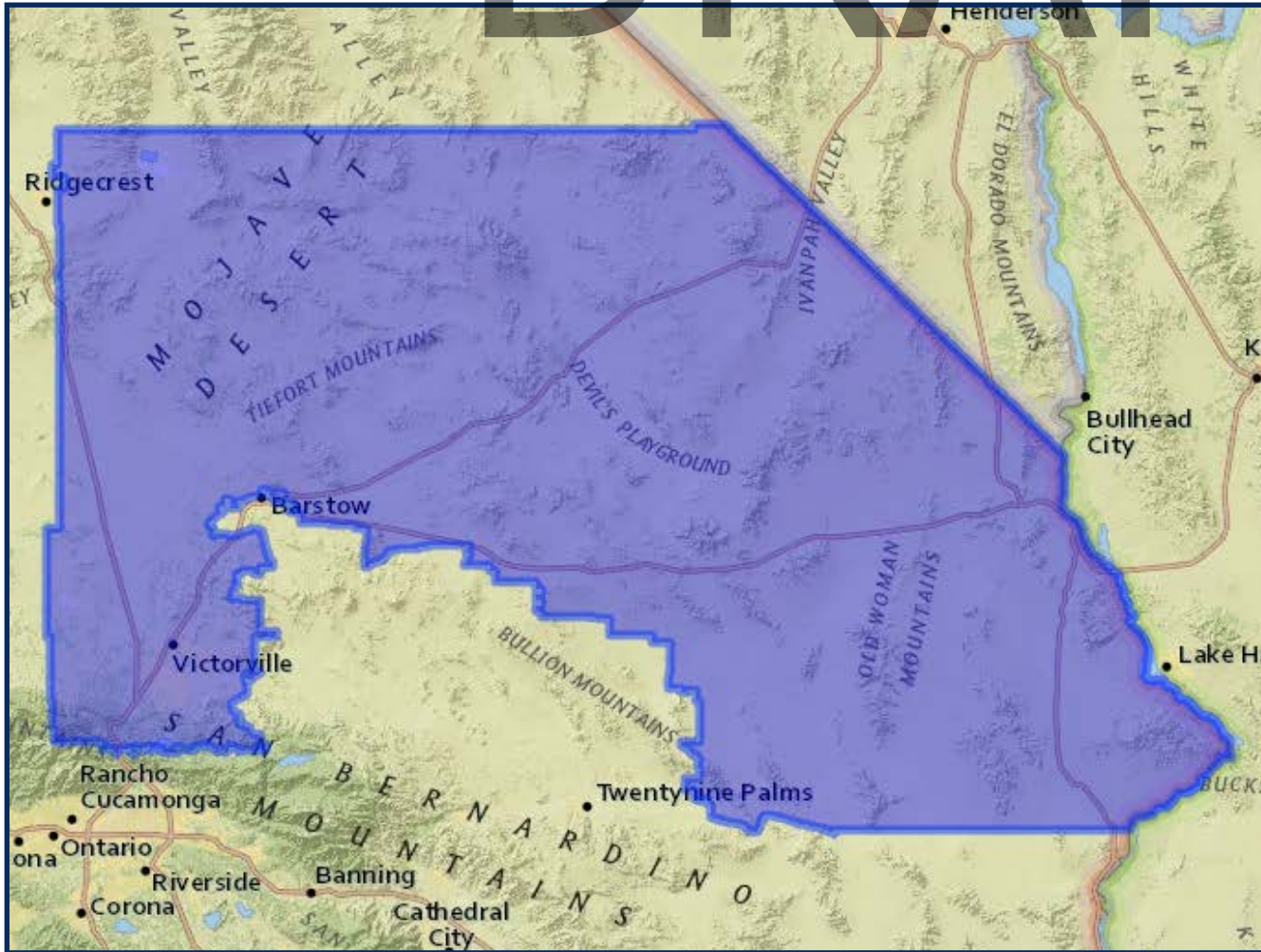




# REDISTRICTING SAN BERNARDINO COMMISSION MAP 3

# DRAFT

## District 1



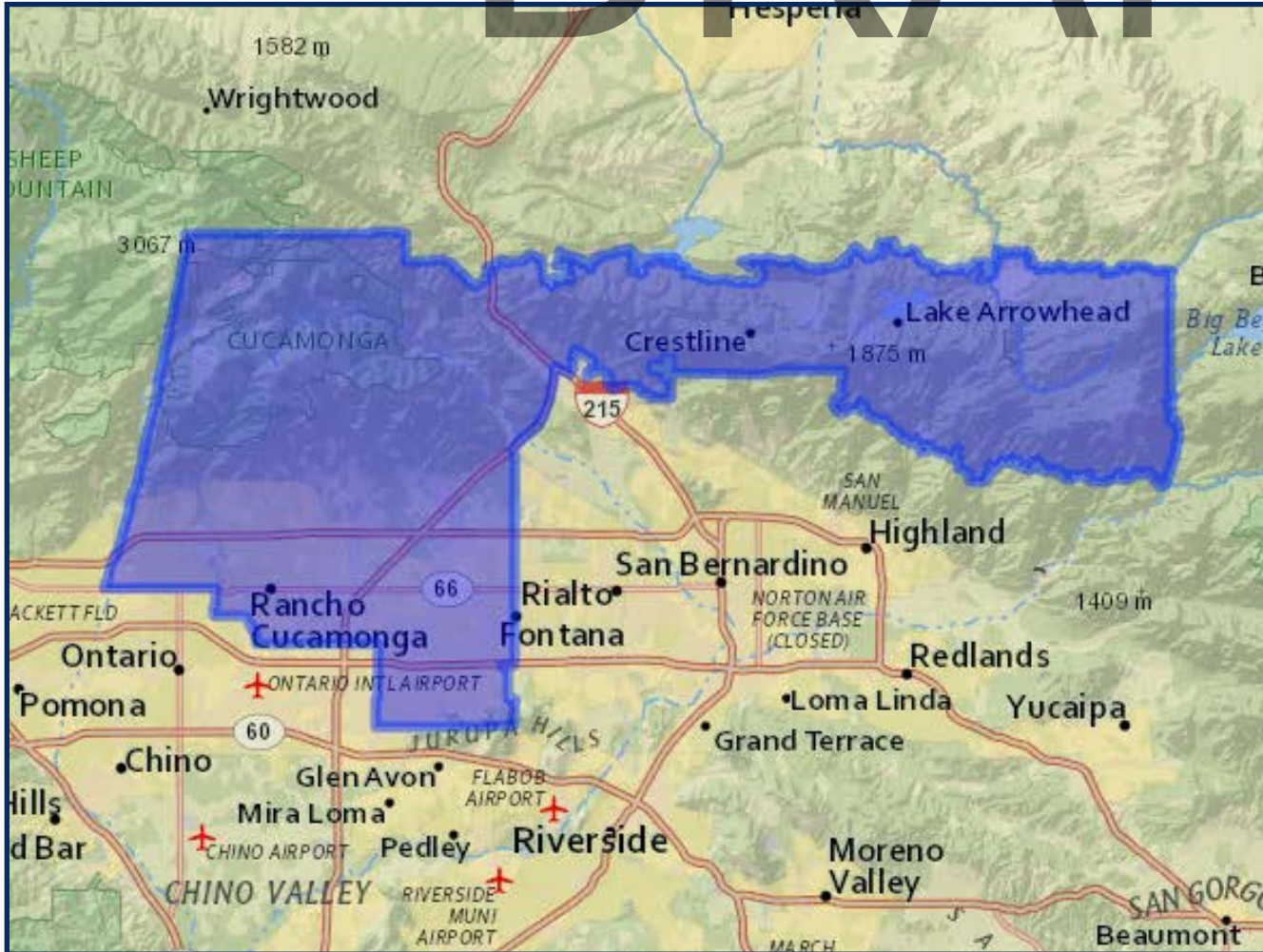
	2020 Count*		2019 CVAP*	
Total	445,485		267,918	
White	143,163	32.14%	121,364	45.30%
Black	44,842	10.07%	27,020	10.09%
Asian	14,336	3.22%	7,010	2.62%
Hispanic	218,846	49.13%	104,615	39.05%

\*Adjusted for prisoner reallocation

# REDISTRICTING SAN BERNARDINO COMMISSION MAP 3

# DRAFT

## District 2



	2020 Count*		2019 CVAP*	
Total	428,010		279,144	
White	124,285	29.04%	102,133	36.59%
Black	32,670	7.63%	25,886	9.27%
Asian	45,963	10.74%	21,907	7.85%
Hispanic	206,566	48.26%	121,274	43.44%

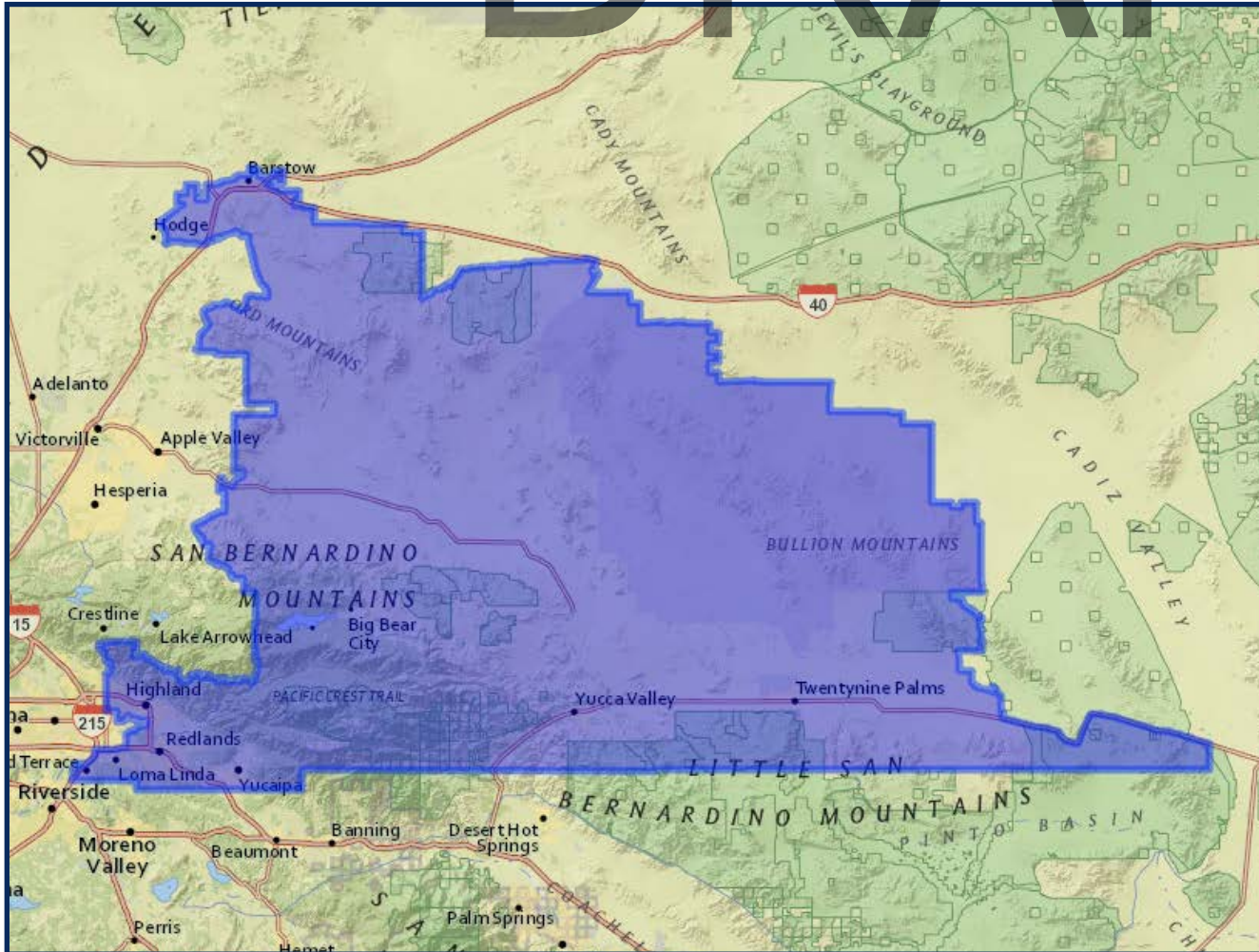
\*Adjusted for prisoner reallocation



# REDISTRICTING SAN BERNARDINO COMMISSION MAP 3

# DRAFT

## District 3



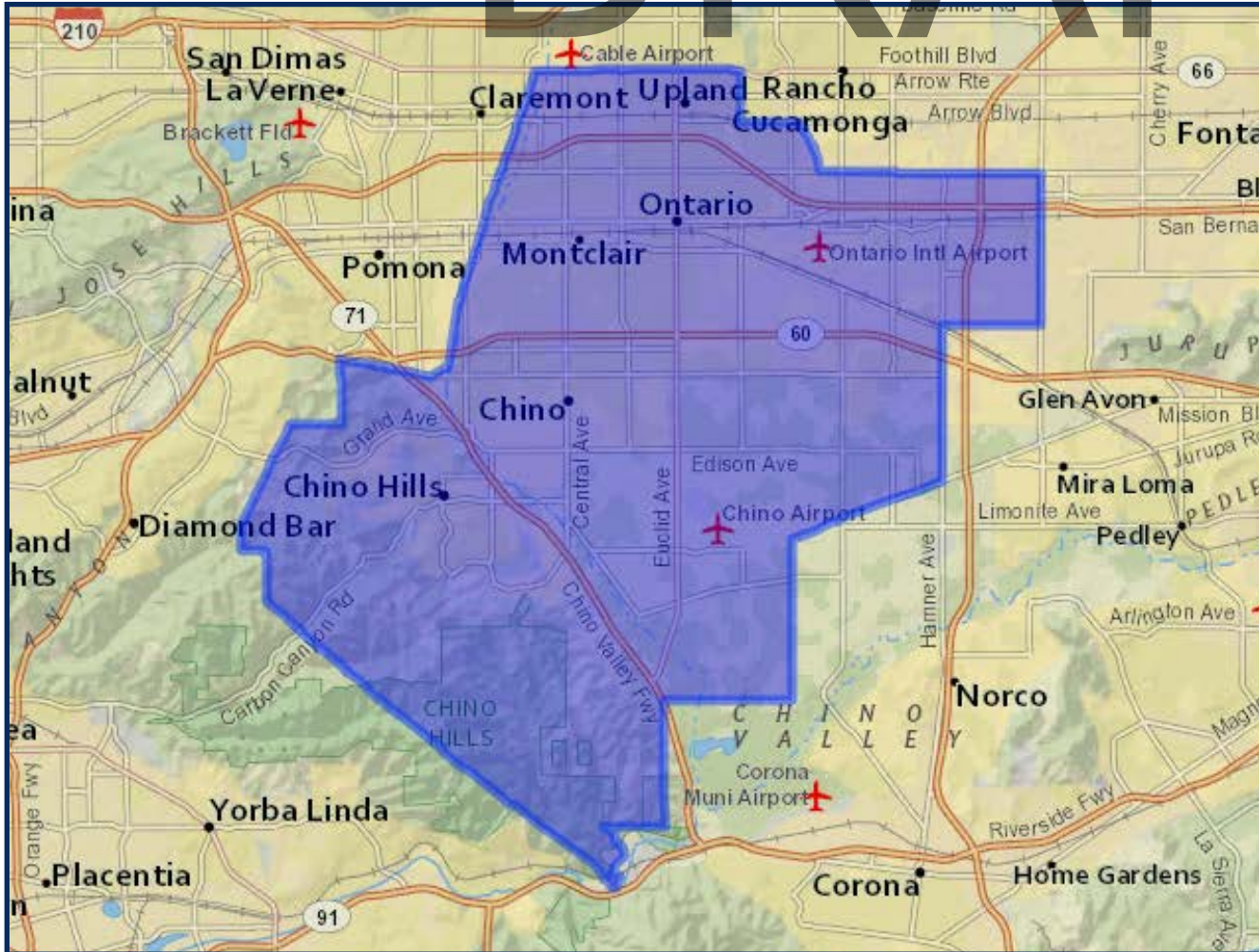
	2020 Count*		2019 CVAP*	
Total	440,921		241,851	
White	177,407	40.24%	153,258	50.93%
Black	33,174	7.52%	23,945	7.96%
Asian	29,544	6.70%	16,323	5.42%
Hispanic	175,108	39.71%	97,153	32.28%

\*Adjusted for prisoner reallocation

# REDISTRICTING SAN BERNARDINO COMMISSION MAP 3

# DRAFT

## District 4



	2020 Count*		2019 CVAP*	
Total	430,528		271,173	
White	74,834	17.38%	73,642	27.16%
Black	22,595	5.25%	15,250	5.62%
Asian	72,621	16.87%	35,578	13.12%
Hispanic	245,979	57.13%	137,598	50.74%

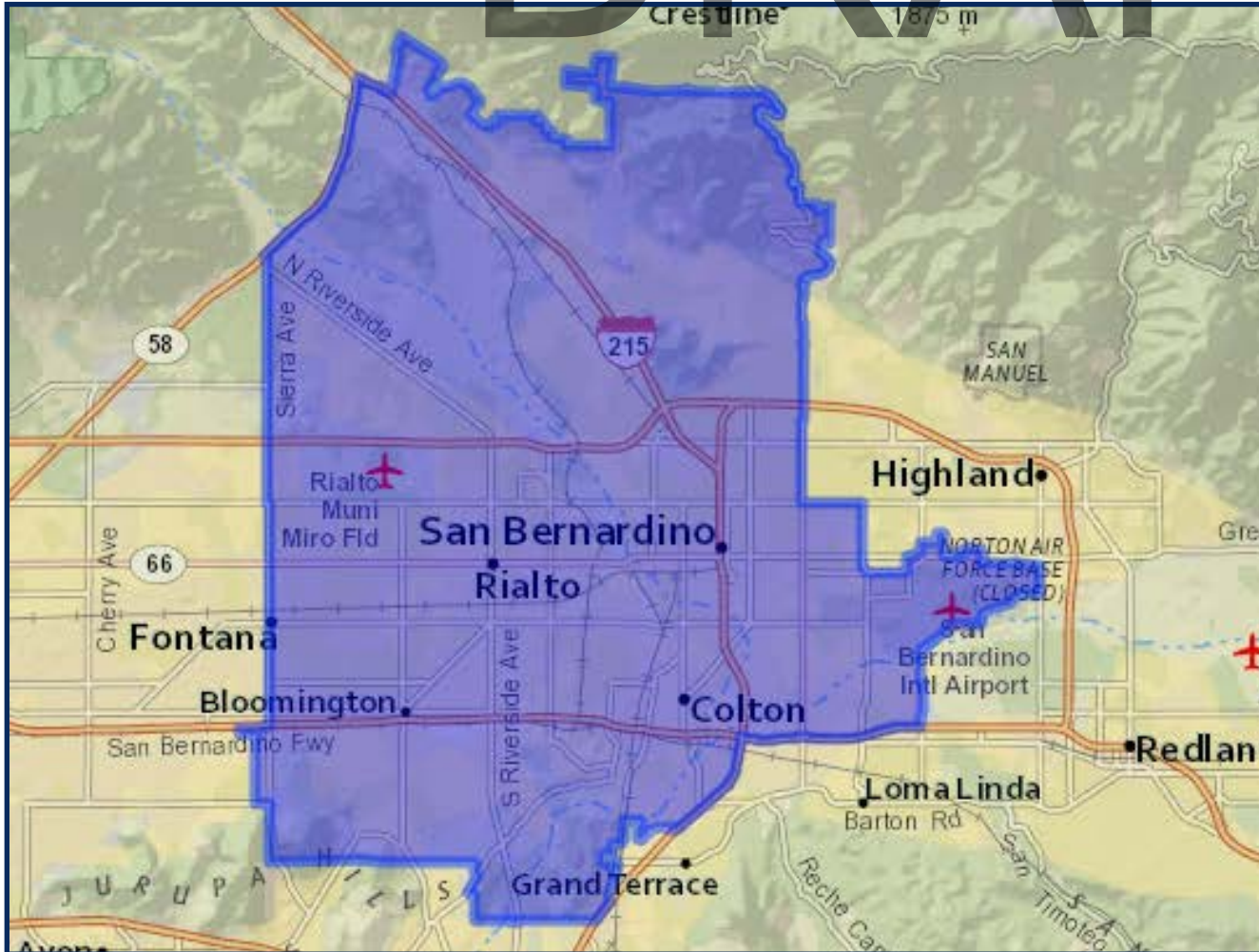
\*Adjusted for prisoner reallocation



# REDISTRICTING SAN BERNARDINO COMMISSION MAP 3

# DRAFT

## District 5



	2020 Count*		2019 CVAP*	
Total	435,208		241,851	
White	45,477	10.45%	42,462	17.56%
Black	40,257	9.25%	32,332	13.37%
Asian	13,612	3.13%	7,935	3.28%
Hispanic	323,941	74.43%	153,399	63.43%

\*Adjusted for prisoner reallocation