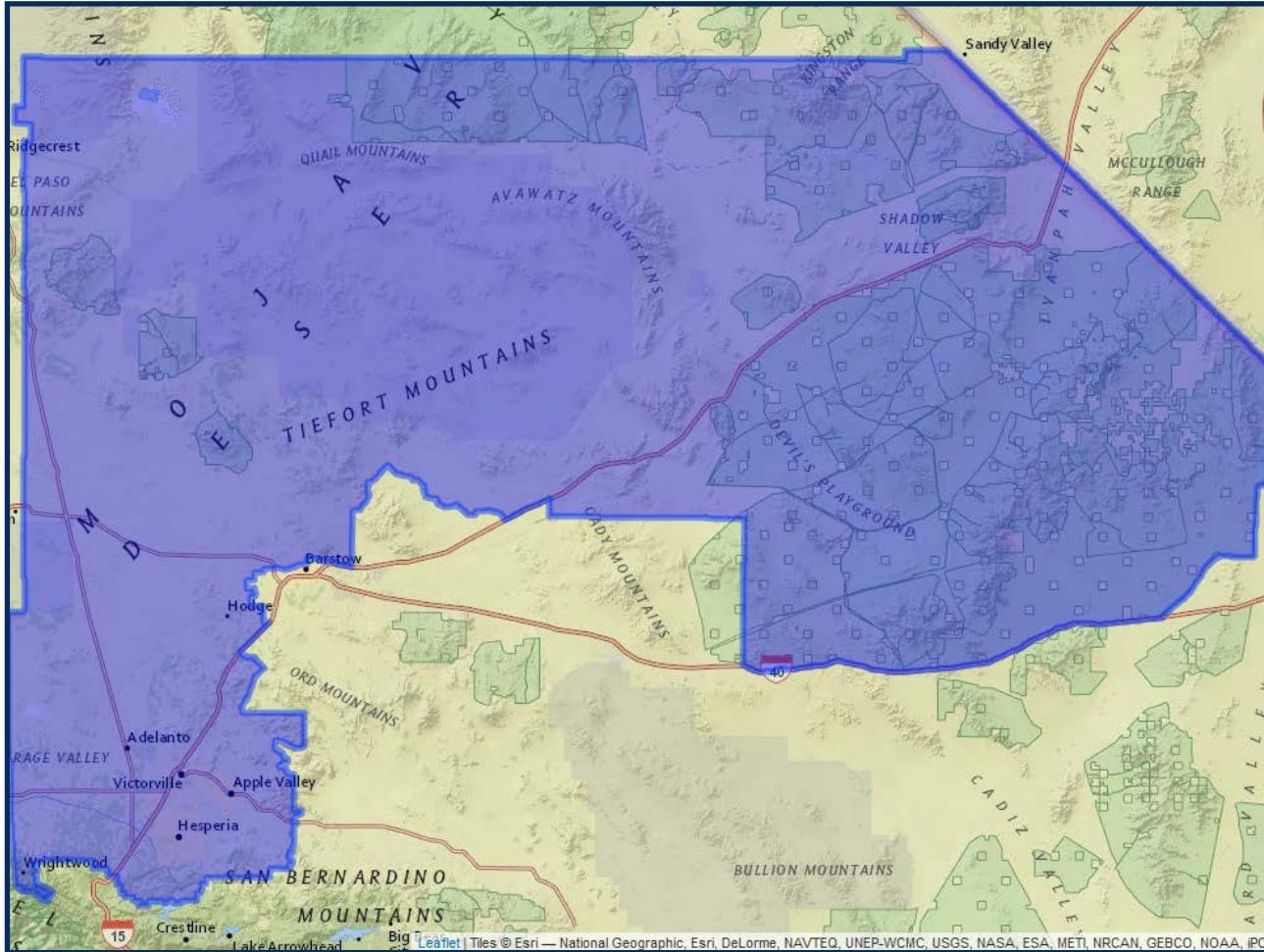


REDISTRICTING SAN BERNARDINO COMMISSION MAP 2

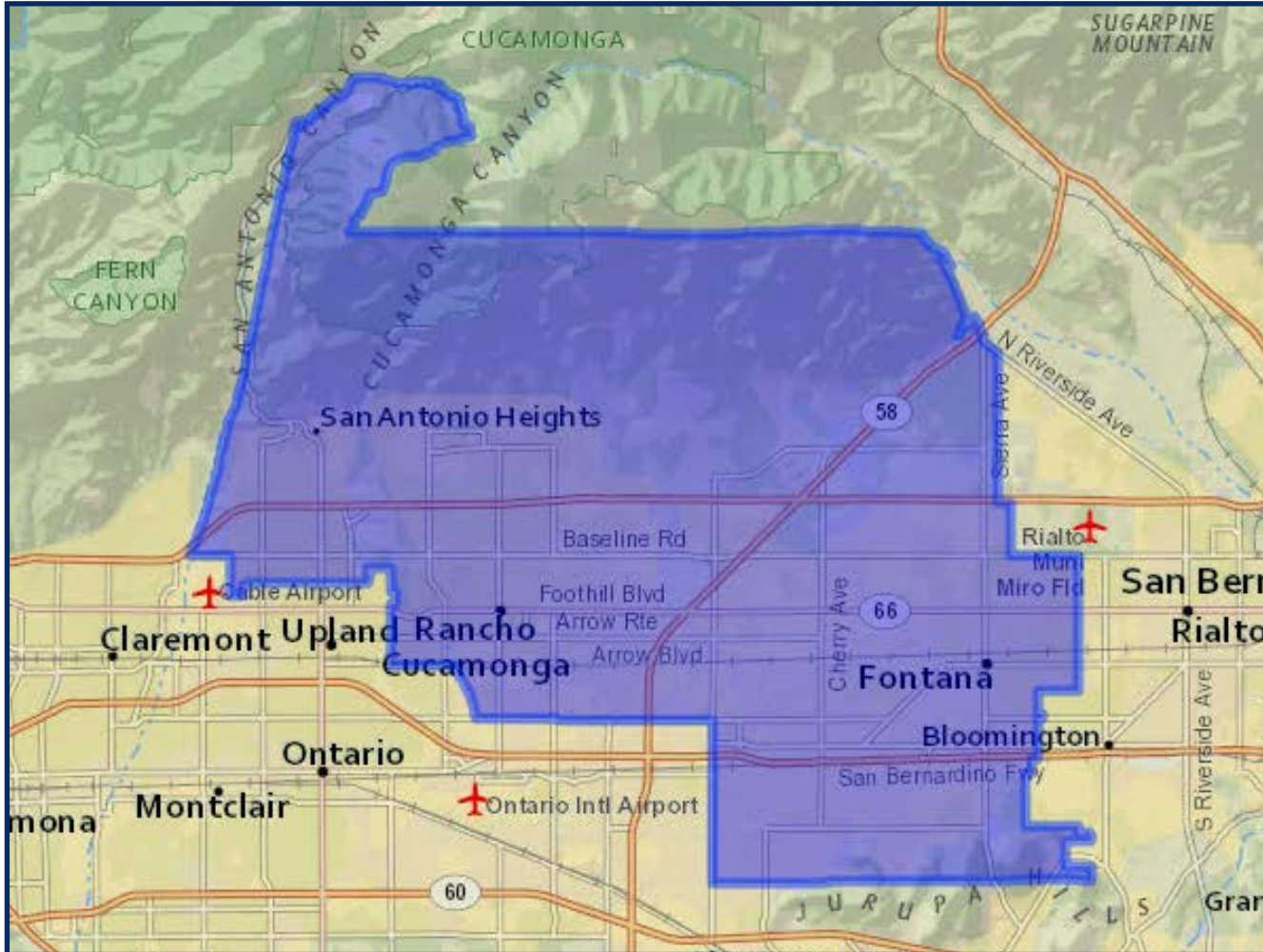
District 1



	Total Population	Latino CVAP %
Apple Valley	76,063	28.6%
Hesperia	100,166	48.6%
Victorville	131,417	47.4%
Adelanto	38,243	55.7%
Unincorporated	84,150	26.5%

REDISTRICTING SAN BERNARDINO COMMISSION MAP 2

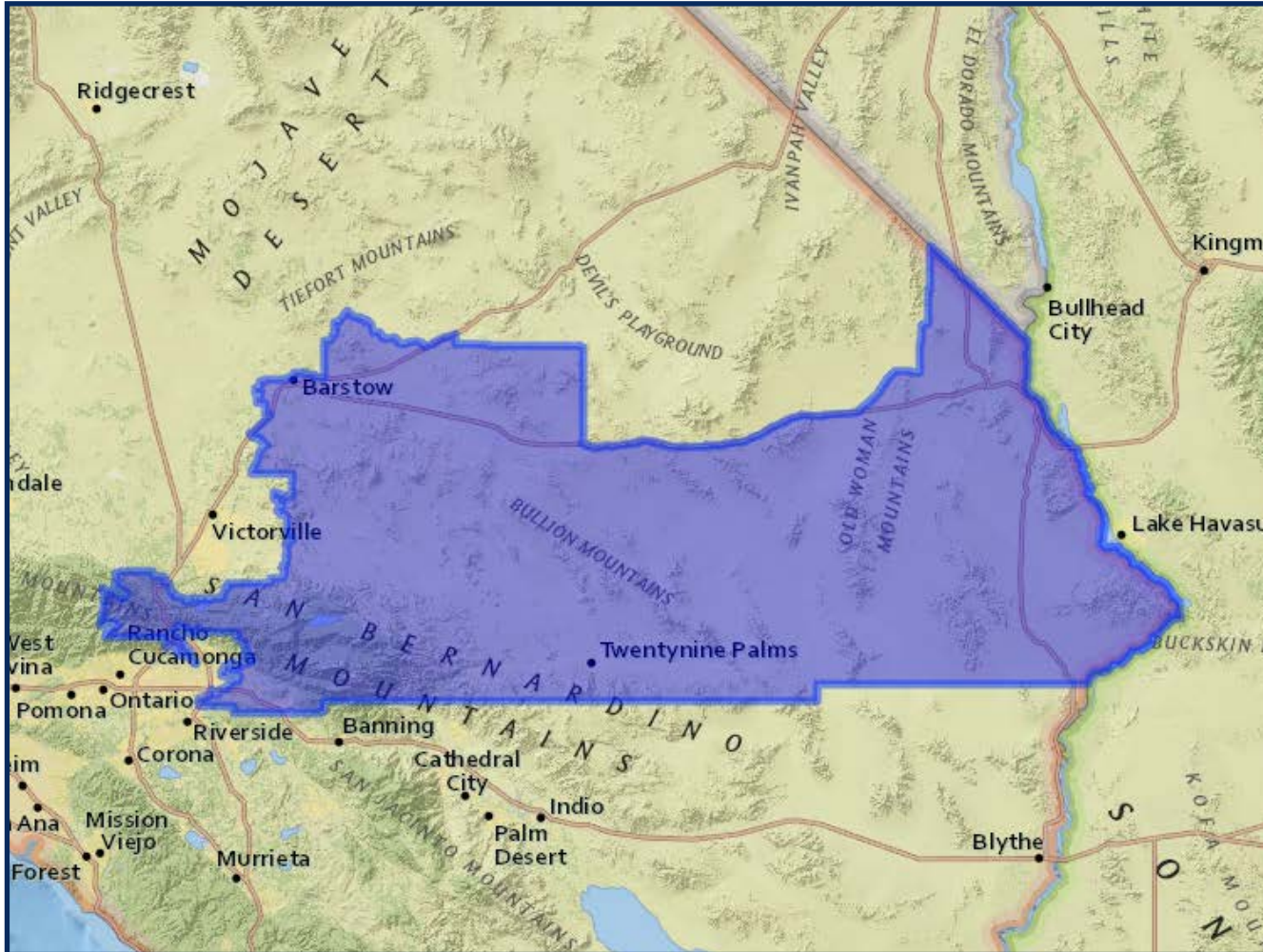
District 2



	Total Population	Latino CVAP %
Fontana	209,060	62.8%
Rancho Cucamonga	174,809	35.0%
Upland	30,016	24.5%
Unincorporated	27,241	71.5%

REDISTRICTING SAN BERNARDINO COMMISSION MAP 2

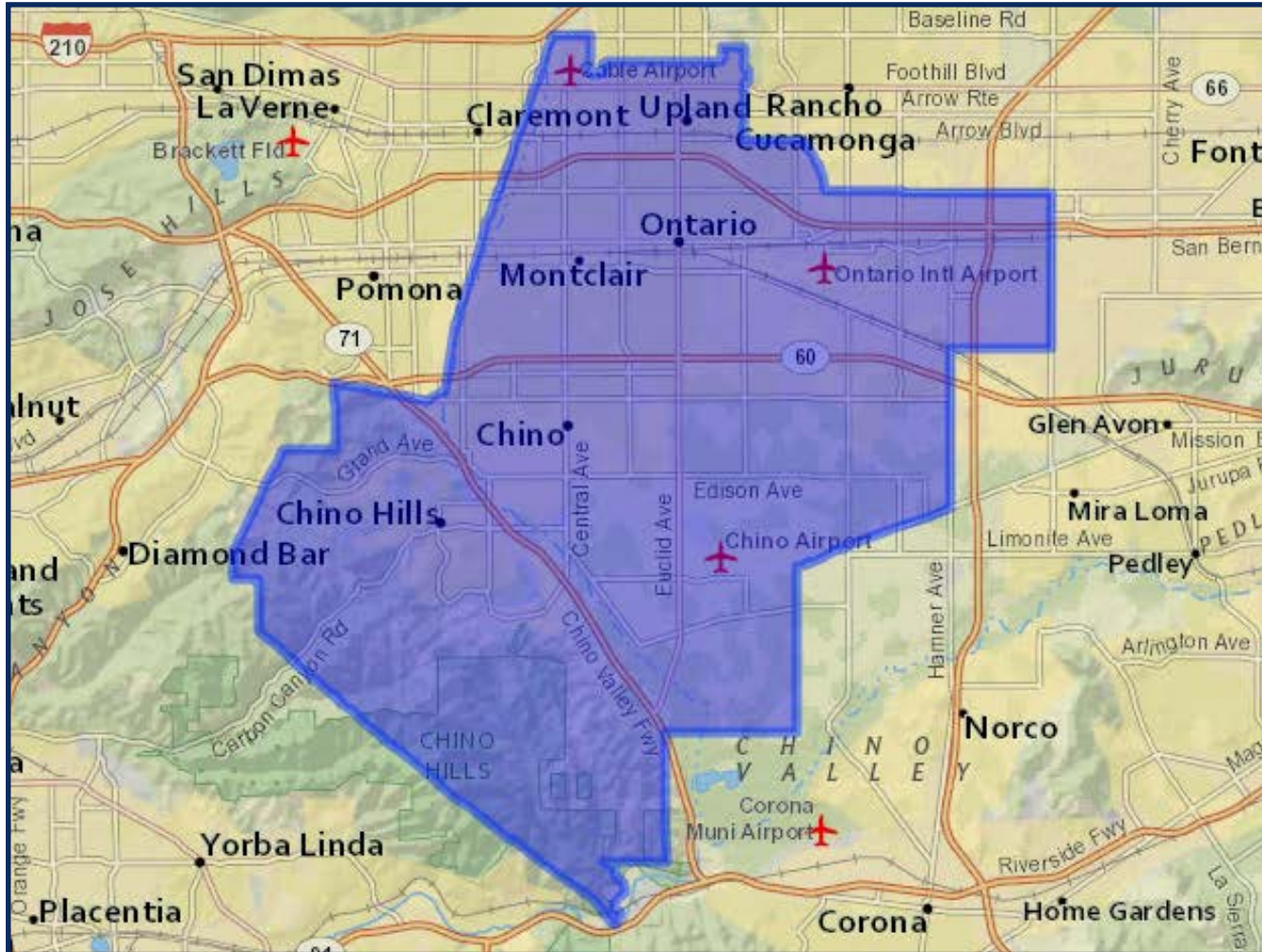
District 3



	Total Population	Latino CVAP %
Yucca Valley	21,814	18.8%
Twentynine Palms	28,142	20.9%
Big Bear Lake	5,061	20.2%
Colton	10,748	35.7%
Yucaipa	54,669	30.1%
Grand Terrace	13,158	43.5%
Redlands	73,381	29.2%
Highland	57,187	43.7%
Loma Linda	24,856	25.9%
Barstow	25,596	40.8%
Needles	4,953	14.6%
Unincorporated	109,483	22.8%

REDISTRICTING SAN BERNARDINO COMMISSION MAP 2

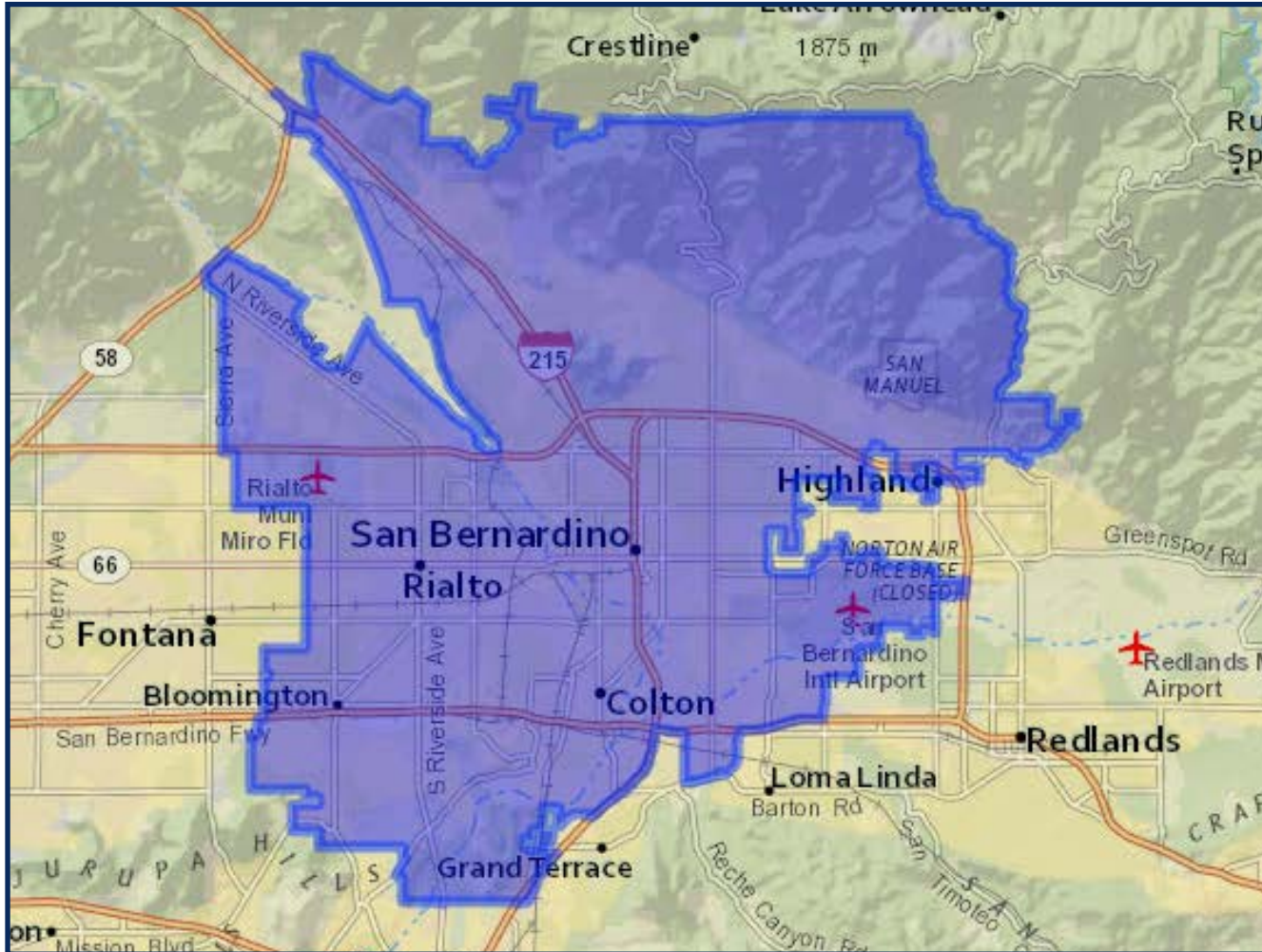
District 4



	Total Population	Latino CVAP %
Montclair	37,989	62.0%
Ontario	175,837	61.5%
Upland	49,353	45.4%
Chino	86,573	46.4%
Chino Hills	78,545	28.8%
Unincorporated	12,615	66.2%

REDISTRICTING SAN BERNARDINO COMMISSION MAP 2

District 5



	Total Population	Latino CVAP %
San Bernardino	223,190	53.8%
Rialto	104,458	64.7%
Colton	43,381	69.1%
Unincorporated	67,918	67.3%