

SAN BERNARDINO COUNTY DEPARTMENT OF PUBLIC WORKS

TRANSPORTATION

PLANS FOR CONSTRUCTION ON

CACTUS AVENUE AND OTHER ROADS

JURUPA AVE: WALNUT ST TO CACTUS AVE
CACTUS AVE: 0.26 MILE SOUTH TO JURUPA AVE
HAMADA LN: FARMERS CT TO CACTUS AVE
FARMERS CT: HAMADA LN N/ END

BLOOMINGTON AREA

WORK ORDER NO. H1145 ROAD NO. 455900-060/197400-014
LENGTH = 0.6 MILE



LOCATION MAP
NOT TO SCALE

SAN BERNARDINO COUNTY

APPROVED BY:

Brendon P. Biggs
BRENDON P. BIGGS, M.S., P.E., DIRECTOR OF PUBLIC WORKS R.C.E. 57127

11-8-21
DATE

APPROVED BY:

David R. Doublet
DAVID R. DOUBLET, M.S., P.E., ASSISTANT DIRECTOR OF PUBLIC WORKS R.C.E. 61291

11/8/21
DATE

MARK	CHANGES	RESIDENT ENGINEER	DATE
NO CHANGES			
TITLE SHEET		SHT. NO.	TOT. SHYS.
		1	9

INDEX OF SHEETS

- 1 TITLE SHEET
- 2 PROJECT NOTES, INDEX MAP, AND LEGENDS
- 3 TYPICAL CROSS SECTIONS
- 4 PLAN AND PROFILE SHEET
- 5 PLAN AND PROFILE SHEET
- 6 PLAN AND PROFILE SHEET
- 7 PLAN AND PROFILE SHEET
- 8 PLAN SHEET
- 9 TRAFFIC SIGNING AND STRIPING SHEET
- 1-4 X-SECTIONS

THE FOLLOWING SPECIAL DRAWINGS AND COUNTY STANDARDS ARE ATTACHED TO THE SPECIAL PROVISIONS:

109 115 MOD 117 119
303 303A 303B

TO BE SUPPLEMENTED BY THE FOLLOWING CALTRANS STANDARD PLANS 2015.

RSP T9, RSP T10, T11, T13

TO BE SUPPLEMENTED BY THE FOLLOWING CALTRANS STANDARD PLANS 2018.

A20A, A20B, A20C, A20D A24A, A24D, A24E, A88A

TO BE SUPPLEMENTED BY THE FOLLOWING CA MUTCD 2014 REVISION 4.

FIG. 2A-2(CA), FIG 2C-13(CA), FIG 3B-102(CA), 3F-101(CA)
FIG 6H-28, FIG 6H-29, SEC. 6D.01, SEC. 6D.02

THIS PROJECT REQUIRES A CONTRACTOR'S LICENSE CLASS "A" OR CLASS "C12"

GENERAL NOTES

- U. THE FACT THAT ANY UTILITY FACILITY IS SHOWN OR NOT SHOWN UPON THE PLANS SHALL NOT RELIEVE THE CONTRACTOR OF THE RESPONSIBILITY UNDER SECTION 5-1.36D "NON-HIGHWAY FACILITIES," OF THE CALTRANS STANDARD SPECIFICATIONS. IT SHALL BE THE CONTRACTOR'S RESPONSIBILITY, PURSUANT THERETO, TO ASCERTAIN THE LOCATION OF ANY UTILITY FACILITY WHICH MAY BE SUBJECT TO DAMAGE BY REASON OF THE CONTRACTOR'S OPERATIONS.

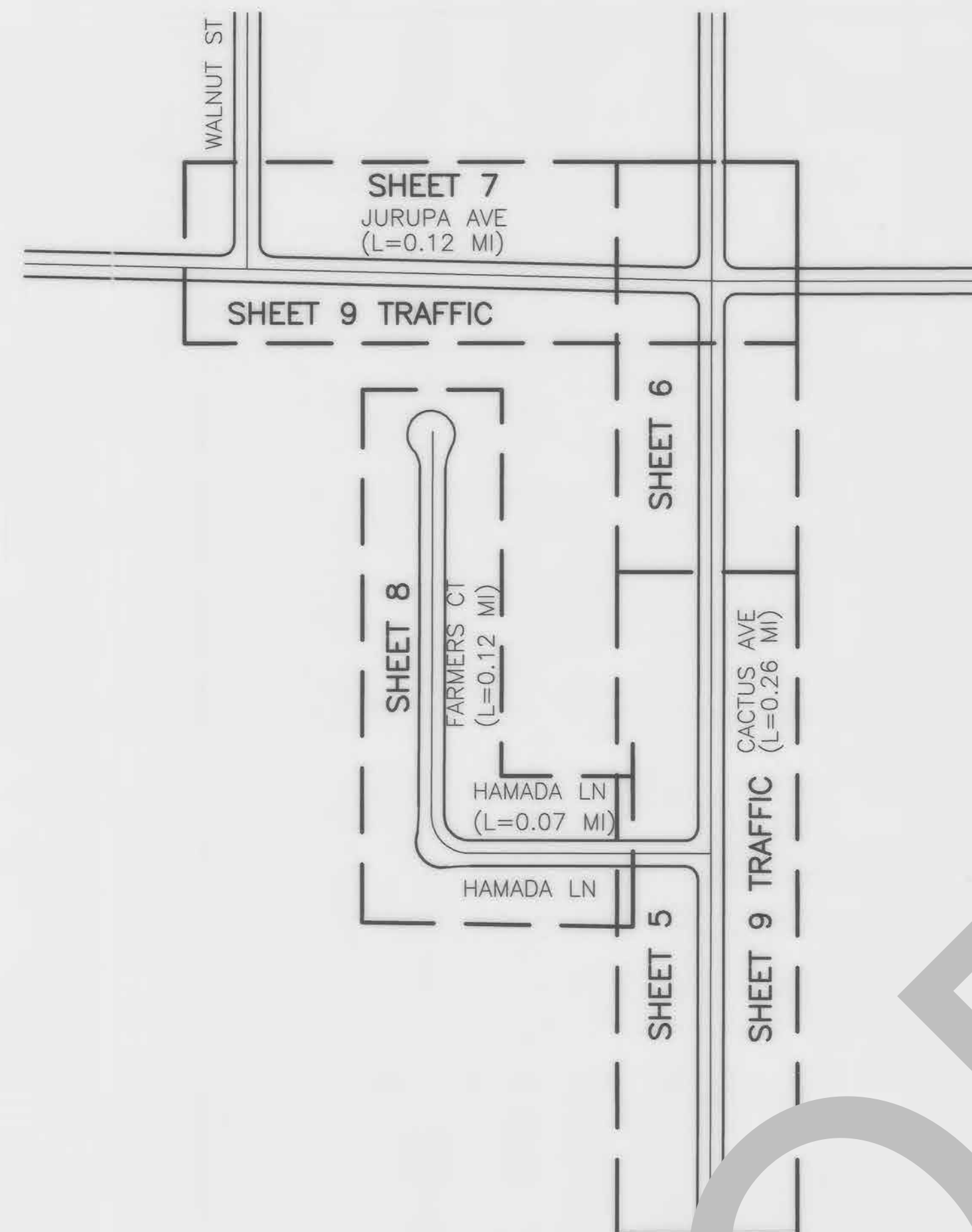
1. ALL STATIONING NOTES ON PLAN REFER TO THE CL IMP CACTUS AVE AND JURUPA AVE OR SIDE STREET.
2. DIMENSIONS ARE SUBJECT TO TOLERANCES SPECIFIED IN THE CALTRANS STANDARD SPECIFICATIONS.
3. ALL PAVEMENT WIDTH DIMENSIONS SHOWN ON THE PLANS ARE TO THE EDGE OF PAVEMENT OR TO THE TOP OF CURB, UNLESS OTHERWISE NOTED.
4. TRANSITIONS AND WARPING SHALL BE AS SHOWN AND AS DETERMINED BY THE ENGINEER.
5. ASPHALT CONCRETE OVERLAYS SHALL BE FEATHERED TO MEET EXISTING AS SHOWN ON THE PLANS OR AS DETERMINED BY THE ENGINEER.
6. ALL TREES & VEGETATION OUTSIDE THE LIMITS OF EXCAVATION AND EMBANKMENT SLOPE LINES, SHALL BE PROTECTED IN PLACE.

BASIS OF BEARINGS:

THE CENTERLINE OF JURUPA AVENUE, FROM WALNUT AVE TO CACTUS AVE (PT.3-PT.1) PER TR.16368, MB 310/75-76, BEING N88°33'00"W.

BENCH MARK:

PT.113 - FD LEAD & SBOD SURV TAG (RP), FLUSH IN CONC CURB AT BCR OF NE RETURN OF JURUPA AVENUE & WALNUT ST, PER CSFB 4016/2480, ELEVATION = 9730.05'



INDEX MAP

SAN BERNARDINO COUNTY TRAFFIC CONTROL GENERAL NOTES

- 1- ALL SIGNING, STRIPING AND PAVEMENT MARKINGS SHALL BE IN CONFORMANCE WITH THE CALIFORNIA MUTCD LATEST EDITION.
- 2- ALL STRIPING AND PAVEMENT MARKINGS SHALL BE PAINTED IN CONFORMANCE WITH THE 2018 CALTRANS STANDARD PLANS DATED MAY 31, 2018.
- 3- ALL STRIPING (LONG LINE AND PAVEMENT MARKINGS SHALL BE PAINTED TO REFLECTIVE PAINT.
- 4- ALL SIGNS SHALL BE OF HIGH INTENSITY (FHWA TYPE III/IV) RETRO-REFLECTIVE SHEETING EXCEPT:
 - A. "STOP" SIGNS SHALL BE OF DIAMOND GRADE (FHWA TYPE VII IN RURAL SETTINGS AND TYPE IX IN URBAN SETTINGS) RETRO-REFLECTIVE SHEETING.
 - B. "NO PARKING" SIGNS SHALL BE OF SUPER ENGINEERING GRADE (FHWA TYPE II) RETRO-REFLECTIVE SHEETING.
 - C. SCHOOL SIGNS SHALL BE OF DIAMOND GRADE (FHWA TYPE IX) FLUORESCENT YELLOW-GREEN (FYG) RETRO-REFLECTIVE SHEETING.
 - D. OBJECT MARKERS SHALL BE OF DIAMOND GRADE (FHWA TYPE IX) RETRO-REFLECTIVE SHEETING AND COMPLY TO COUNTY STANDARD.
 - E. CONSTRUCTION SIGNS SHALL BE OF DIAMOND GRADE (FHWA TYPE IX) FLUORESCENT ORANGE RETRO-REFLECTIVE SHEETING.
- 5- ALL DELINEATORS, CHANNELIZERS, AND OBJECT MARKERS SHALL BE OF (FHWA TYPE VII) RETRO-REFLECTIVE SHEETING.
- 6- SIGNS SHALL BE MOUNTED ON METAL POSTS SIMILAR TO COUNTY STANDARDS 303(a) AND 303(b).
- 7- ALL CONFLICTING SIGNING AND PAVEMENT MARKINGS NOT SHOWN ON PLANS SHALL BE REMOVED BY THE CONTRACTOR. REMOVAL SHALL BE ACCOMPLISHED BY SANDBLASTING, GRINDING, OR REMOVAL BY COUNTY REPRESENTATIVE.
- 8- ALL CONFLICTING SIGNS SHALL BE REMOVED, RELOCATED, OR COVERED BY THE CONTRACTOR. RELOCATABLE SIGNS SHALL BE INSTALLED AS SPECIFIED ON THE PLANS OR AS DIRECTED BY COUNTY REPRESENTATIVE.
- 9- ALL UNPROTECTED LOCATIONS RESULTING IN ISOLATED ABRUPT DEPRESSIONS OR ELEVATED OBJECTS (i.e. CATCH BASINS, HEADWALLS, POWER POLES, END TREATMENT OF ASPHALT DIKES AND CONCRETE CURBS) SHALL BE PROTECTED BY DELINEATORS OR BARRIERS PER THE CALIFORNIA MUTCD LATEST EDITION.
- 10- ALL EXISTING SIGNING, STRIPING AND PAVEMENT MARKINGS (i.e. CROSS STREET STOP, STOP LIMIT LINE, AND CROSSWALK PAVEMENT MARKINGS) NOT SHOWN ON PLANS, IF REMOVED/OBLITERATED, SHALL BE REPLACED/RESTORED OF SAME KIND, AND IN CONFORMANCE WITH THE CALIFORNIA MUTCD LATEST EDITION.
- 11- THE CONTRACTOR SHALL NOTIFY COUNTY REPRESENTATIVE TO SCHEDULE A FINAL REVIEW (WALK THROUGH) WITH TRAFFIC DIVISION PERSONNEL FOR APPROVAL OF TRAFFIC CONTROL DEVICES PRIOR TO PROJECT ACCEPTANCE.

CONSTRUCTION & UNDERGROUND UTILITY LEGEND

- ASPHALT CONCRETE PAVEMENT
- REMOVE ASPHALT CONCRETE OVER EXIST. PIPE
- ASPHALT CONCRETE OVERLAY
- PORTLAND CEMENT CONCRETE
- PROPOSED SLOPE
- EXISTING SLOPE
- GAS LINE
- SEWER MAIN
- WATER LINE
- ELECTRIC LINE
- TELEPHONE LINE

ABBREVIATIONS

- AB = AGGREGATE BASE
- AC = ASPHALT CONCRETE
- BP = BEGIN PROJECT
- BEG = BEGINNING
- BVC = BEGIN VERTICAL CURVE
- CL = CENTER LINE
- ELEV = ELEVATION
- EDGE OF PAVEMENT
- EXIST = EXISTING
- EVC = END VERTICAL CURVE
- FL = FLOW LINE
- GB = GRADE BREAK
- GP = GRADE POINT
- INVERT
- NOT TO SCALE
- ORIGINAL GROUND
- PROFILE GRADE
- PI = POINT OF INTERSECTION
- PL = PROPERTY LINE
- R/W = RIGHT OF WAY
- SHLDR = SHOULDER
- SHT = SHEET
- STA = STATION
- SUR = SURVEY
- THK = THICKNESS
- VAR = VARIES
- VC = VERTICAL CURVE
- CR = CURB RETURN

CONSTRUCTION NOTES:

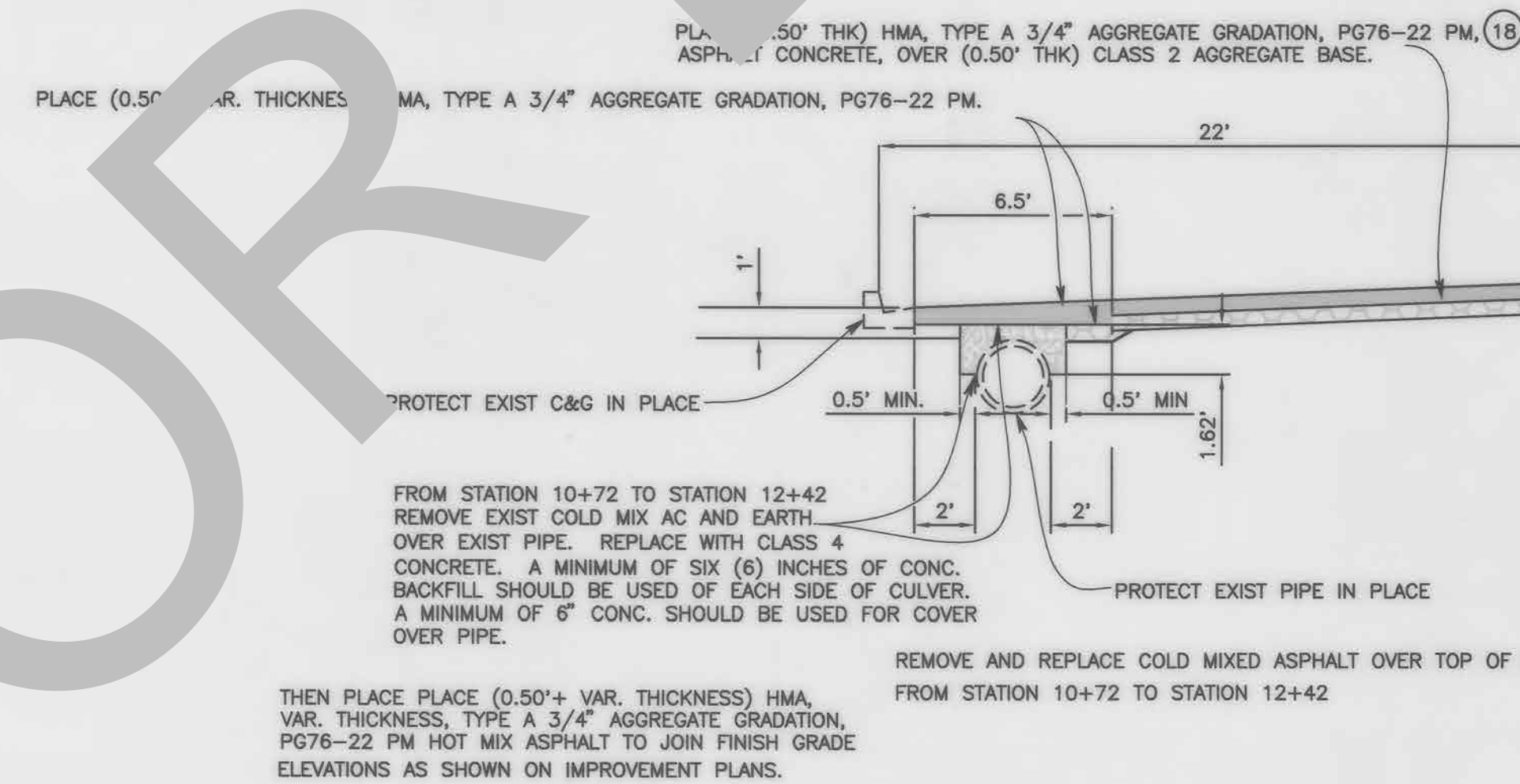
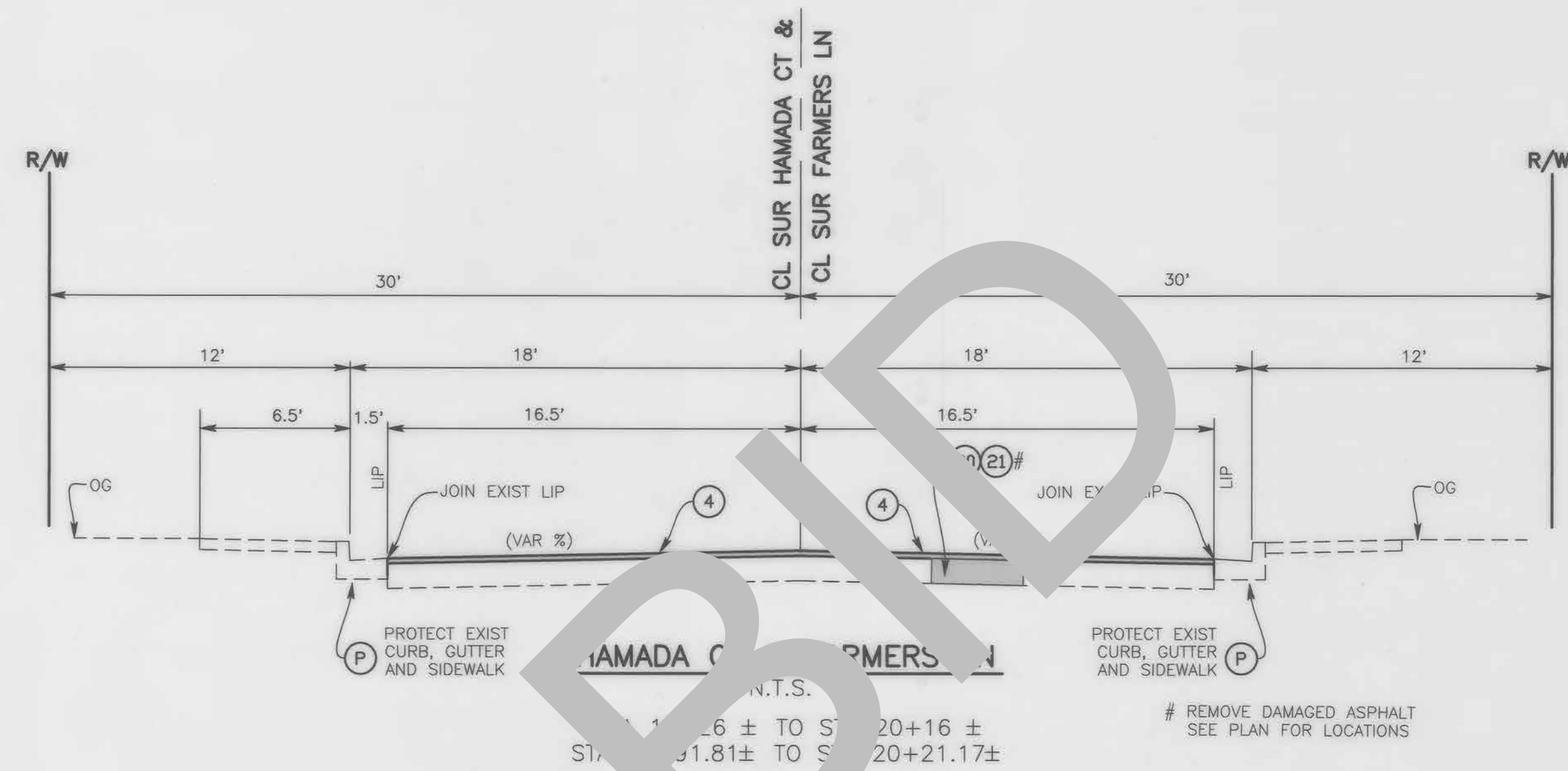
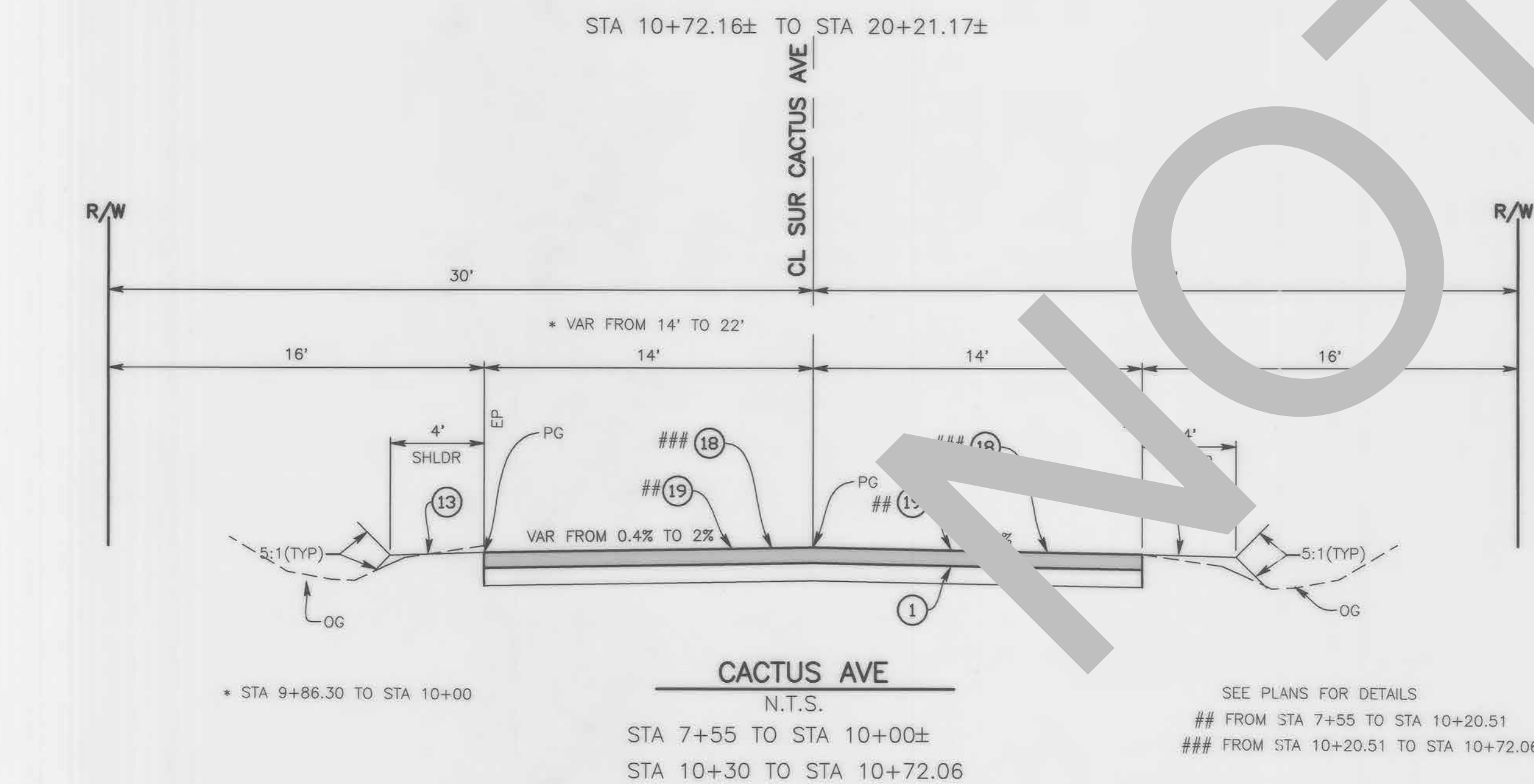
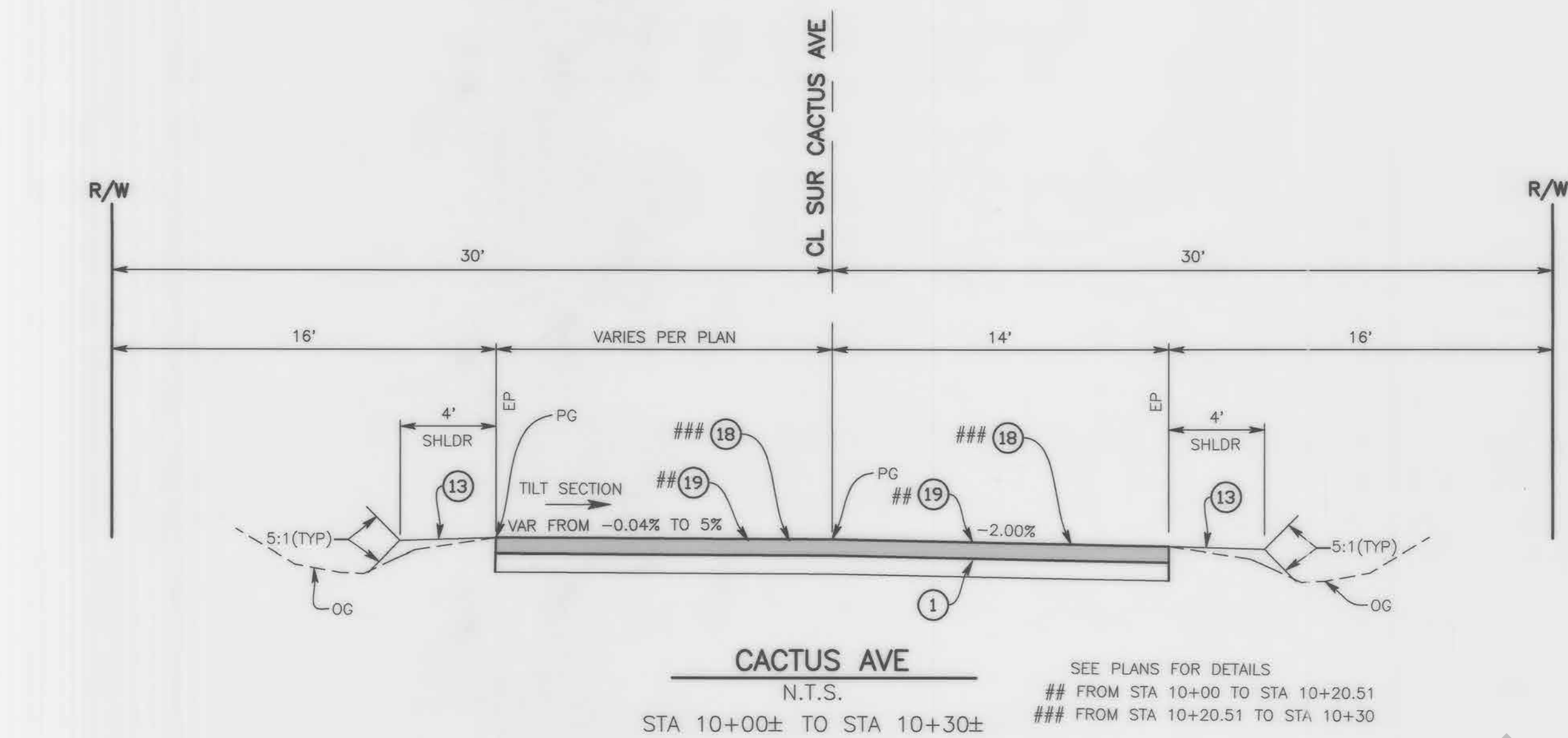
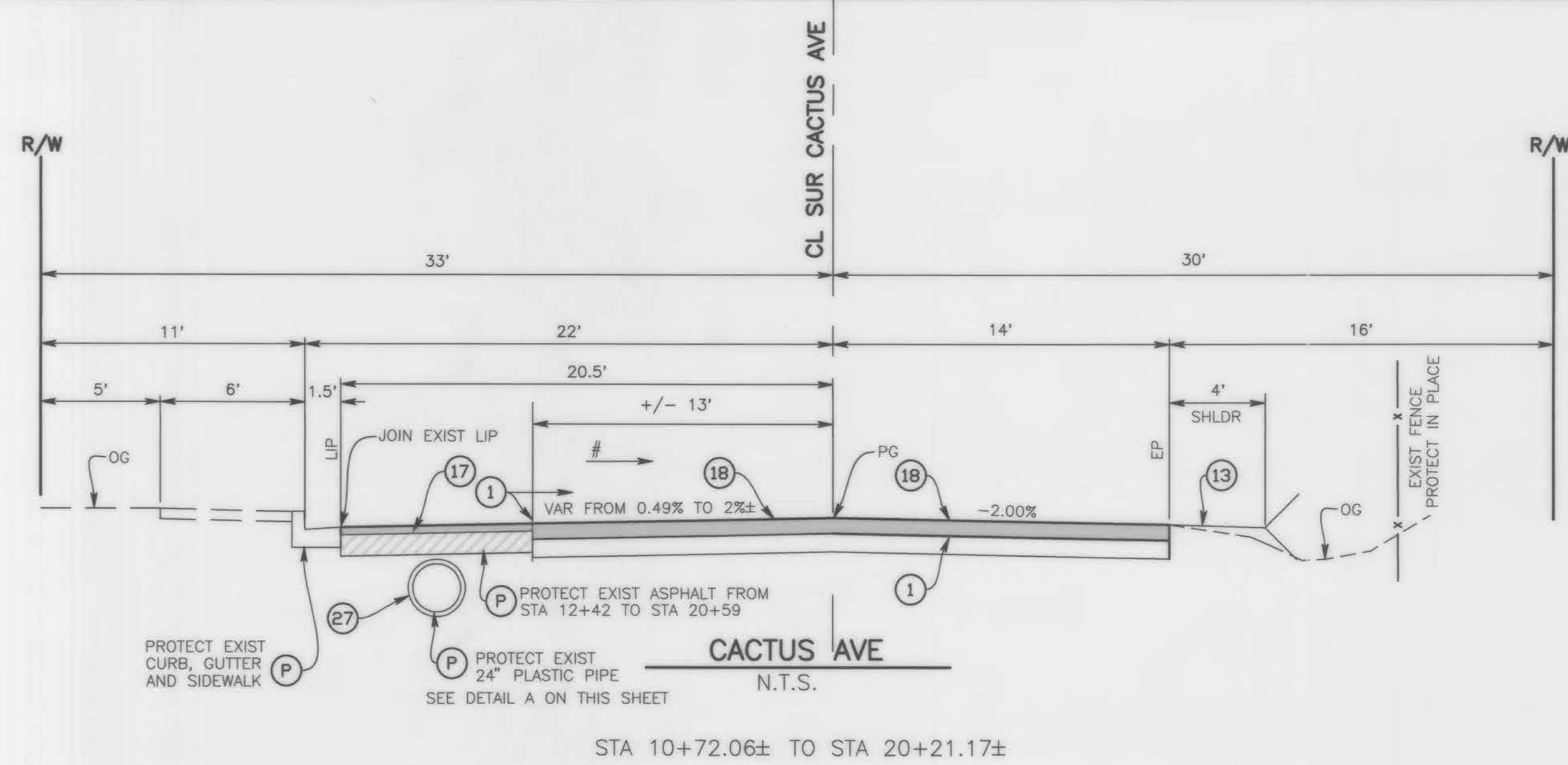
- U UTILITIES TO BE RESET BY OTHERS (SEE NOTE U. OF GENERAL NOTES ON THIS SHEET).
- P PROTECT IN PLACE.
- 1 SAWCUT AND REMOVE ASPHALT CONCRETE SURFACING.
- 2 COLD PLANE (0.15' THK) EXISTING ASPHALT CONCRETE PAVEMENT (2' WIDE MIN.)
- 3 PLACE (0.15' THK) ASPHALT CONCRETE OVERLAY (TYPE A).
- 4 PLACE (0.20'), TYPE G 1/2" AGGREGATE GRADATION, PG 64-16 RHMA ASPHALT CONCRETE OVERLAY OVER EXISTING ASPHALT PAVING. (TACK COAT BETWEEN ALL LAYERS).
- 5 EXPOSE NATIVE SOIL AND COMPACT TO 95% FOR A DEPTH OF 2.5 FEET BELOW THE TOP FINISHED PAVEMENT SURFACE. PLACE (0.50' THK) HMA, TYPE A 3/4" AGGREGATE GRADATION, PG76-22 PM, ASPHALT CONCRETE, APPLY PRIME COAT, OVER (0.40' THK) CLASS 2 AGGREGATE BASE.
- 6 CONSTRUCT 8" CURB AND GUTTER PER COUNTY STD 115 (MODIFIED).
- 7 CONSTRUCT CONCRETE SIDEWALK PER SAN BERNARDINO COUNTY STD 109, TYPE C. (4' MIN. CLEARANCE AROUND PP. WIDEN SIDEWALK IF NECESSARY.)
- 8 SAWCUT AND REMOVE EXISTING CONCRETE RAMP.
- 9 CONSTRUCT CURB RAMP PER CALTRANS STD 2018 RSP A88A, DETAIL B.
- 10 REMOVE EXISTING PADDLE MARKER AND DELIVER TO ENGINEER. SEE SPECIAL PROVISIONS FOR DETAILS.
- 11 ADJUST WATER VALVE TO GRADE.
- 12 MANHOLE TO BE ADJUSTED TO GRADE BY OTHERS.
- 13 CONSTRUCT SHOULDER BACKING PER SHEET 3.
- 14 PLACE 8" ASPHALT CONCRETE DIKE PER COUNTY STANDARD 117.
- 15 PLACE VAR. THICKNESS TYPE A 1/2" AGGREGATE, MISCELLANEOUS ASPHALT PAVEMENT.
- 16 ADJUST EXISTING GRATE TO GRADE.
- 17 PLACE (0.15' THK & VAR.) HMA, TYPE A 3/4" AGGREGATE GRADATION, PG76-22 PM ASPHALT CONCRETE OVERLAY OVER EXISTING ASPHALT PAVING. (TACK COAT BETWEEN ALL LAYERS).
- 18 PLACE (0.50' THK) HMA, TYPE A 3/4" AGGREGATE GRADATION, PG76-22 PM, ASPHALT CONCRETE, OVER (0.50' THK) CLASS 2 AGGREGATE BASE.
- 19 PLACE (0.50' THK) HMA, TYPE A 3/4" AGGREGATE GRADATION, PG76-22 PM, ASPHALT CONCRETE, OVER (0.65' THK) CLASS 2 AGGREGATE BASE.
- 20 REMOVE EXISTING ASPHALT 0.35' AND PLACE (0.35' THK) HMA, TYPE A 3/4" AGGREGATE GRADATION, PG 64-10 HMA, ASPHALT CONCRETE, OVER NATIVE SUB-GRADE.
- 21 REMOVE EXISTING ASPHALT 0.53' AND PLACE (0.53' THK) HMA, TYPE A 3/4" AGGREGATE GRADATION, PG 64-10 HMA, ASPHALT CONCRETE, OVER NATIVE SUB-GRADE.
- 22 PROTECT EXISTING ASPHALT DRAINAGE SWALE IN PLACE.
- 23 COLD PLANE (0.06' THK) EXISTING ASPHALT CONCRETE PAVEMENT.
- 24 SAWCUT AND REMOVE EXISTING SPANDREL AND CURB.
- 25 CONSTRUCT CONCRETE SPANDREL PER COUNTY STANDARDS 119.
- 26 ADJUST EXISTING GRATE TO GRADE.
- 27 REMOVE EXISTING COLD MIX ASPHALT AND EARTH OVER EXISTING PIPE FROM STA 10+72 TO STA 12+42. REPLACE WITH 6" MIN. THICK CLASS 4 CONCRETE, THEN PLACE (0.50' VAR. THICKNESS) HMA, TYPE A 3/4" AGGREGATE GRADATION, PG76-22 PM HOT MIX ASPHALT PER DETAIL "A" ON SHEET 3.

TRAFFIC CONSTRUCTION NOTES:

- 50 PAINT PAVEMENT MARKINGS PER THE CALTRANS 2018 STANDARD PLAN A24D.
- 51 PAINT 12-INCH WHITE LIMIT LINE/STOP LINE PER THE CALTRANS 2018 STANDARD PLAN A24E.
- 52 PAINT DOUBLE-6-INCH YELLOW STRIPE PER THE CALTRANS 2018 STANDARD PLAN A20A, DETAIL 22.
- 53 PAINT 6-INCH WHITE EDGELINE PER THE CALTRANS 2018 STANDARD PLAN A20B, DETAIL 27B.
- 54 INSTALL BLUE RETROREFLECTIVE RAISED PAVEMENT MARKER FOR THE EXISTING FIRE HYDRANT PER THE CALIFORNIA MUTCD DATED 2014, FIGURE 3B-102(CA).
- 55 EXISTING SIGN(S) TO BE RESET LATERALLY AS SHOWN ON PLAN AND PER THE CALIFORNIA MUTCD DATED 2014, FIGURES 2A-2(CA) AND 2C-13(CA).
- 56 PROTECT IN PLACE EXISTING SIGN(S), STRIPING, DELINEATOR, OBJECT MARKER OR PAVEMENT MARKING(S).
- 57 PAINT 8" WHITE CHANNELIZING LINE PER THE CALTRANS 2018 STANDARD PLAN A20D, DETAIL 3B.
- 58 PAINT 8" WHITE LANE DROP MARKINGS PER THE CALTRANS 2018 STANDARD PLAN A20C, DETAIL 37B.
- 59 PAINT TYPE IV (R) RIGHT TURN ARROW PAVEMENT MARKING PER THE CALTRANS 2018 STANDARD PLAN A24A.
- 60 PAINT 8" WHITE HATCH MARKING AT 45'-100' SPACING PER CA MUTCD 2014, SEC. 3B.24.
- 61 INSTALL ROADSIDE SIGN PER CA MUTCD 2014, FIG. 2A-2(CA).
- 62 INSTALL CLASS 1-TYPE F DELINEATOR PER CA MUTCD 2014, FIG. 3F-101(CA).

FILE NO. 455900-060/197400-014

FILE NO. 455900-060/197400-014



CACTUS AVE DETAIL "A"
N.T.S.

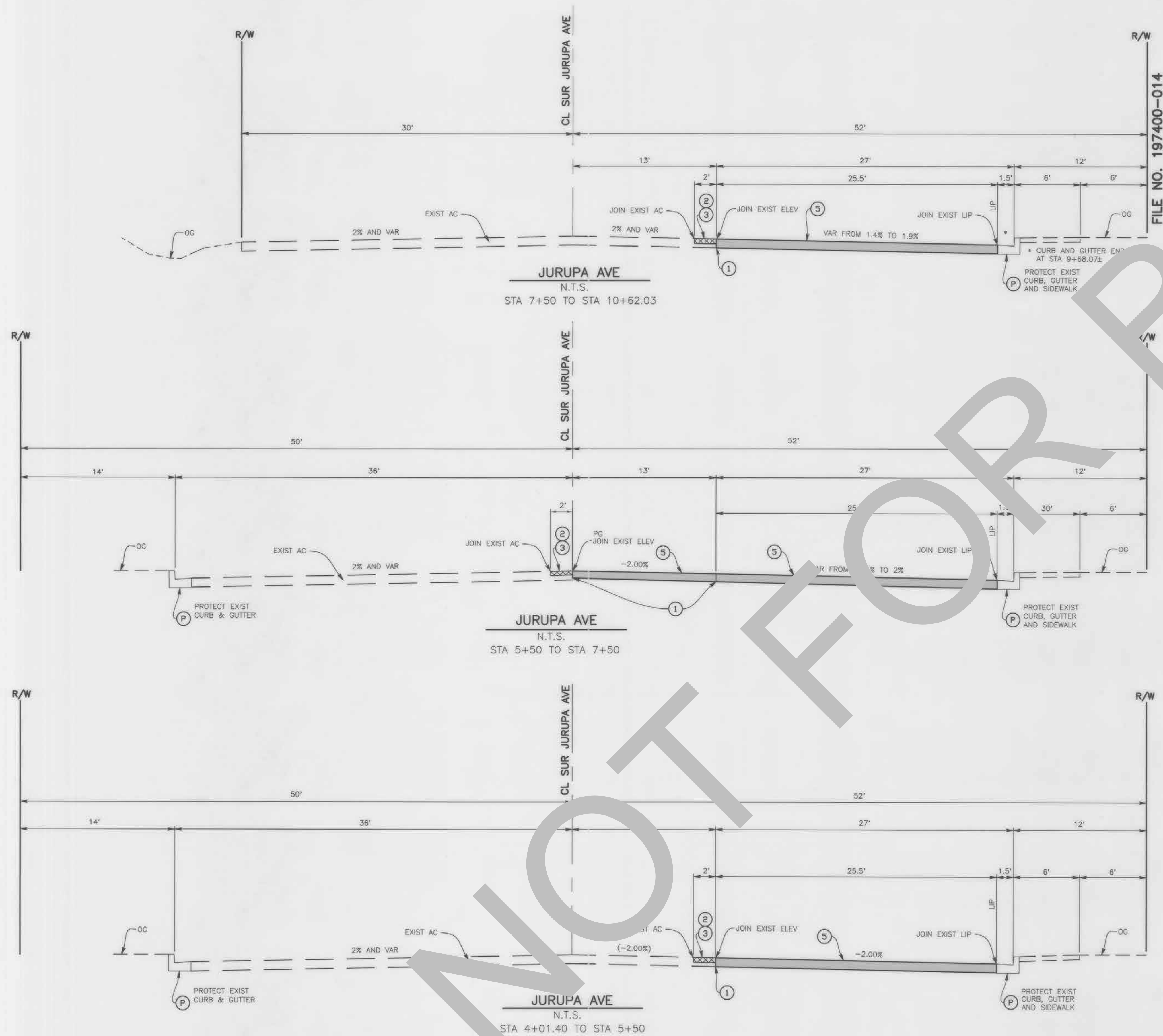
- CONSTRUCTION NOTES:
- PROTECT IN PLACE
 - SAWCUT AND REMOVE ASPHALT CONCRETE SURFACING.
 - COLD PLANE (0.15' THK) EXISTING ASPHALT CONCRETE PAVEMENT (2' WIDE MIN.)
 - PLACE (0.15' THK) ASPHALT CONCRETE OVERLAY (TYPE A).
 - PLACE (0.20'), TYPE G 1/2" AGGREGATE GRADATION, PG 64-16 RHMA ASPHALT CONCRETE OVERLAY OVER EXISTING ASPHALT PAVING. (TACK COAT BETWEEN ALL LAYERS).
 - PLACE (0.50' THK) HMA, TYPE A 3/4" AGGREGATE GRADATION, PG76-22 PM, ASPHALT CONCRETE, OVER (0.40' THK) CLASS 2 AGGREGATE BASE.
 - CONSTRUCT SHOULDER BACKING PER SHEET 3.
 - PLACE (0.15' THK & VAR.) HMA, TYPE A 3/4" AGGREGATE GRADATION, PG76-22 PM ASPHALT CONCRETE OVERLAY OVER EXISTING ASPHALT PAVING. (TACK COAT BETWEEN ALL LAYERS).
 - PLACE (0.50' THK) HMA, TYPE A 3/4" AGGREGATE GRADATION, PG76-22 PM, ASPHALT CONCRETE, OVER (0.50' THK) CLASS 2 AGGREGATE BASE.
 - PLACE (0.50' THK) HMA, TYPE A 3/4" AGGREGATE GRADATION, PG76-22 PM, ASPHALT CONCRETE, OVER (0.65' THK) CLASS 2 AGGREGATE BASE.
 - REMOVE EXISTING ASPHALT 0.35' AND PLACE (0.35' THK) HMA, TYPE A 3/4" AGGREGATE GRADATION, PG 64-10 HMA, ASPHALT CONCRETE, OVER NATIVE SUB-GRADE..
 - REMOVE EXISTING ASPHALT 0.53' AND PLACE (0.53' THK) HMA, TYPE A 3/4" AGGREGATE GRADATION, PG 64-10 HMA, ASPHALT CONCRETE, OVER NATIVE SUB-GRADE..
 - REMOVE EXISTING COLD MIX ASPHALT AND EARTH OVER EXISTING PIPE FROM STA 10+72 TO STA 12+42. REPLACE WITH 6" MIN. THICK CLASS 4 CONCRETE, THEN PLACE (0.50' VAR. THICKNESS) HMA, TYPE A 3/4" AGGREGATE GRADATION, PG76-22 PM HOT MIX ASPHALT PER DETAIL "A" ON SHEET 3.

<p>DESIGNED BY: DJ</p> <p>DRAWN BY: DJ/MDV</p> <p>CHECKED BY: ESR</p> <p>RECOMMENDED BY: <i>[Signature]</i> 11/8/21</p>		<p>DATE: 11/8/21</p>	
<p>APPROVED BY: <i>[Signature]</i> 11/8/21</p> <p>DATE: 11/8/21</p>		<p>APPROVED BY: <i>[Signature]</i> 11/8/21</p> <p>DATE: 11/8/21</p>	
<p>THOMAS BUSTAMANTE, P.E. SUPERVISING ENGINEER</p>		<p>NOEL CASTILLO, P.E. DEPUTY DIRECTOR</p>	

<p>FIELD CHANGES</p>		<p>RESIDENT ENGINEER: _____ DATE: _____</p>	
----------------------	--	---	--

<p>MARK</p>		<p>CHANGES</p>	
<p>NO CHANGES</p>		<p>DATE</p>	

<p>SAN BERNARDINO COUNTY DEPARTMENT OF PUBLIC WORKS</p>		<p>JURUPA AVE AND CACTUS AVE TYPICAL CROSS SECTIONS BLOOMINGTON AREA</p>	
<p>J.L. REF. J.L.11766</p>		<p>W.O. NO. H15045</p>	
<p>PLAN SCALE 1"=5'</p>		<p>SHT. NO. 3</p>	
<p>TOT. SHT'S. 9</p>		<p></p>	



CONSTRUCTION NOTES:	
P	PROTECT IN PLACE
1	SAWCUT AND REMOVE ASPHALT CONCRETE SURFACING.
2	COLD PLANE (0.15' THK) EXISTING ASPHALT CONCRETE PAVEMENT (2' WIDE MIN.)
3	PLACE (0.15' THK) ASPHALT CONCRETE OVERLAY (TYPE A).
4	PLACE (0.20' THK) TYPE G 1/2" AGGREGATE GRADATION, PG 64-16 RHMA ASPHALT CONCRETE OVERLAY OVER EXISTING ASPHALT PAVING. (TACK COAT BETWEEN ALL LAYERS).
5	PLACE (0.50' THK) HMA, TYPE A 3/4" AGGREGATE GRADATION, PG76-22 PM, ASPHALT CONCRETE, OVER (0.40' THK) CLASS 2 AGGREGATE BASE.
13	CONSTRUCT SHOULDER BACKING PER SHEET 3.
17	PLACE (0.15' THK & VAR.) HMA, TYPE A 3/4" AGGREGATE GRADATION, PG76-22 PM ASPHALT CONCRETE OVERLAY OVER EXISTING ASPHALT PAVING. (TACK COAT BETWEEN ALL LAYERS).
18	PLACE (0.50' THK) HMA, TYPE A 3/4" AGGREGATE GRADATION, PG76-22 PM, ASPHALT CONCRETE, OVER (0.50' THK) CLASS 2 AGGREGATE BASE.
19	PLACE (0.50' THK) HMA, TYPE A 3/4" AGGREGATE GRADATION, PG76-22 PM, ASPHALT CONCRETE, OVER (0.65' THK) CLASS 2 AGGREGATE BASE.
20	REMOVE EXISTING ASPHALT 0.35' AND PLACE (0.35' THK) HMA, TYPE A 3/4" AGGREGATE GRADATION, PG 64-10 HMA, ASPHALT CONCRETE, OVER NATIVE SUB-GRADE.
21	REMOVE EXISTING ASPHALT 0.53' AND PLACE (0.53' THK) HMA, TYPE A 3/4" AGGREGATE GRADATION, PG 64-10 HMA, ASPHALT CONCRETE, OVER NATIVE SUB-GRADE.

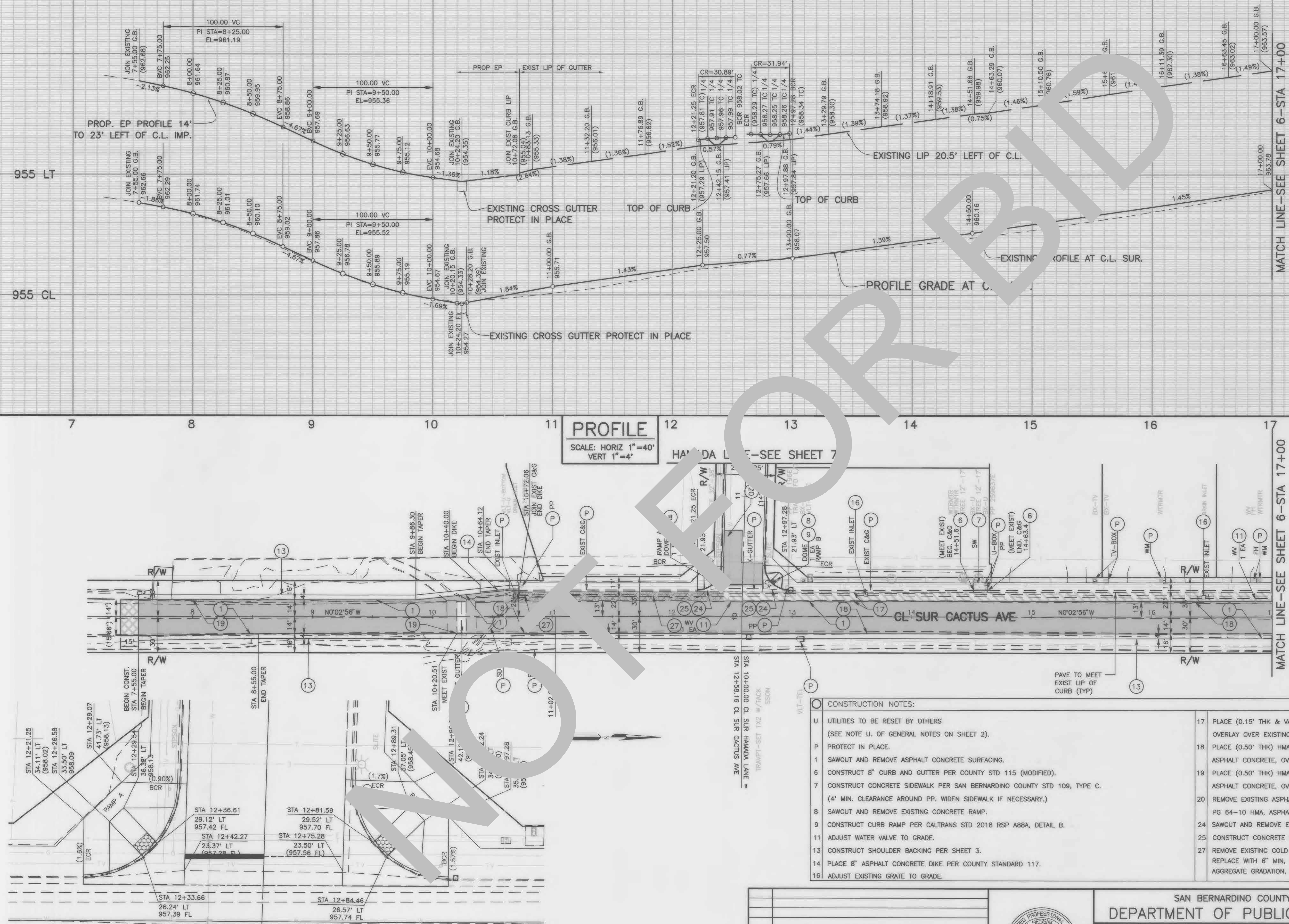
CHANGES	RESIDENT ENGINEER	DATE
NO CHANGES		
FIELD CHANGES		



SAN BERNARDINO COUNTY DEPARTMENT OF PUBLIC WORKS			
DESIGNED BY: DJ	DRAWN BY: DJ/MDV	CHECKED BY: ESR	RECOMMENDED BY: THOMAS BUSTAMONTE, P.E. 11/8/21 ENGINEERING MANAGER
APPROVED BY: THOMAS BUSTAMONTE, P.E. 11/2/21 SUPERVISING ENGINEER			DATE 11/8/21



JURUPA AVE AND
CACTUS AVE
TYPICAL CROSS SECTIONS
BLOOMINGTON AREA

J.L. REF.	W.D. NO.	P.L.H. SCALE	SHT. NO.	TOT. SHT'S.
J.L.11766	H15045	1"=5'	4	9



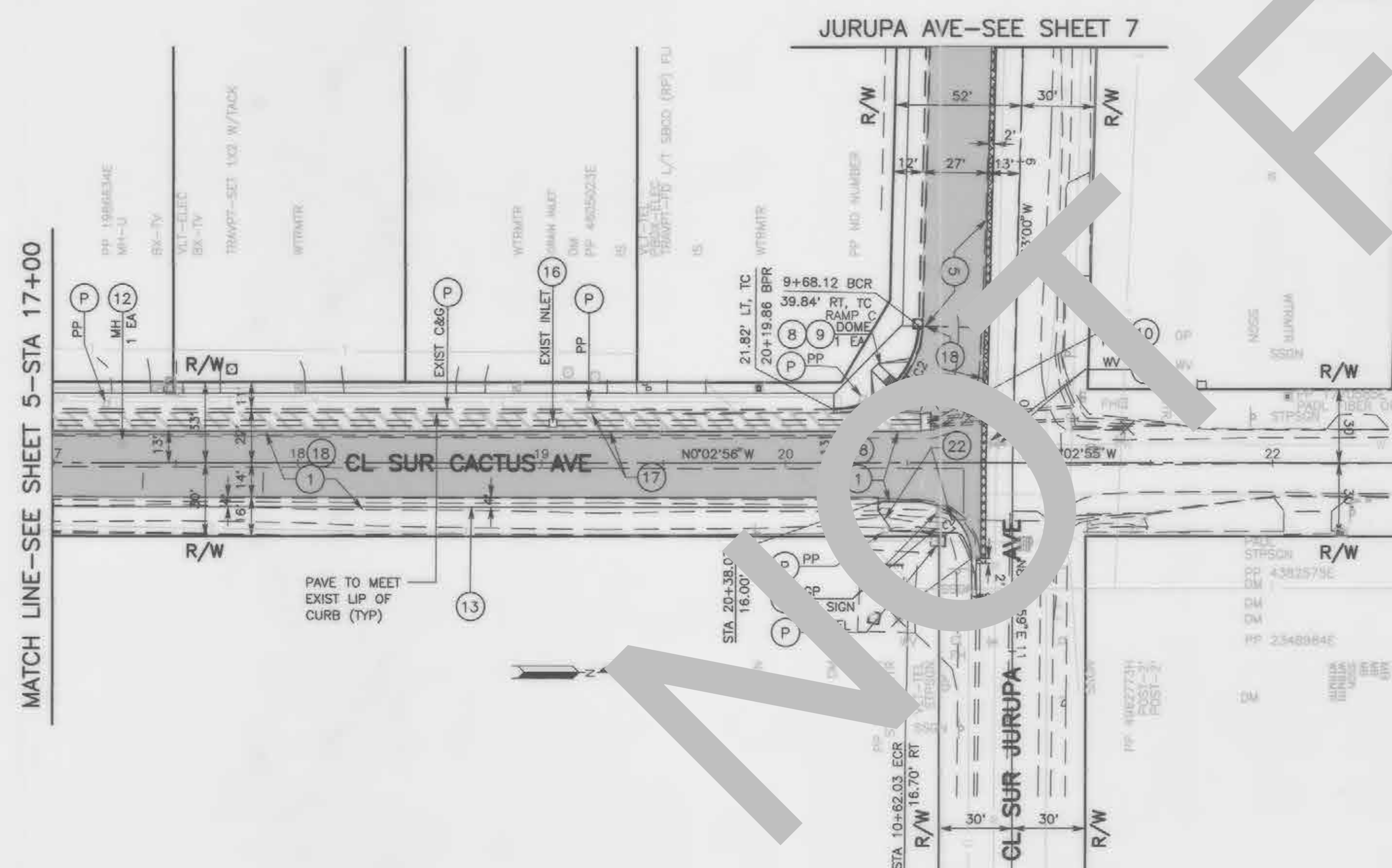
E.P. OR T.C. RETURN DATA				
C#	RADIUS	DELTA	LENGTH	TANGENT
C3	20.00'	088°29'55"	30.89'	19.48'
C4	20.00'	091°30'05"	31.94'	20.53'

- | CONSTRUCTION NOTES: | |
|---------------------|---|
| U | UTILITIES TO BE RESET BY OTHERS
(SEE NOTE U. OF GENERAL NOTES ON SHEET 2). |
| P | PROTECT IN PLACE. |
| 1 | SAWCUT AND REMOVE ASPHALT CONCRETE SURFACING. |
| 6 | CONSTRUCT 8" CURB AND GUTTER PER COUNTY STD 115 (MODIFIED). |
| 7 | CONSTRUCT CONCRETE SIDEWALK PER SAN BERNARDINO COUNTY STD 109, TYPE C.
(4' MIN. CLEARANCE AROUND PP. WIDEN SIDEWALK IF NECESSARY.) |
| 8 | SAWCUT AND REMOVE EXISTING CONCRETE RAMP. |
| 9 | CONSTRUCT CURB RAMP PER CALTRANS STD 2018 RSP AB8A, DETAIL B. |
| 11 | ADJUST WATER VALVE TO GRADE. |
| 13 | CONSTRUCT SHOULDER BACKING PER SHEET 3. |
| 14 | PLACE 8" ASPHALT CONCRETE DIKE PER COUNTY STANDARD 117. |
| 16 | ADJUST EXISTING GRATE TO GRADE. |
| 17 | PLACE (0.15' THK & VAR.) HMA, TYPE A 3/4" AGGREGATE GRADATION, PG76-22 PM ASPHALT CONCRETE OVERLAY OVER EXISTING ASPHALT PAVING. (TACK COAT BETWEEN ALL LAYERS). |
| 18 | PLACE (0.50' THK) HMA, TYPE A 3/4" AGGREGATE GRADATION, PG76-22 PM, ASPHALT CONCRETE, OVER (0.50' THK) CLASS 2 AGGREGATE BASE. |
| 19 | PLACE (0.50' THK) HMA, TYPE A 3/4" AGGREGATE GRADATION, PG76-22 PM, ASPHALT CONCRETE, OVER (0.65' THK) CLASS 2 AGGREGATE BASE. |
| 20 | REMOVE EXISTING ASPHALT 0.35' AND PLACE (0.35' THK) HMA, TYPE A 3/4" AGGREGATE GRADATION, PG 64-10 HMA, ASPHALT CONCRETE, OVER NATIVE SUB-GRADE.. |
| 24 | SAWCUT AND REMOVE EXISTING SPANDREL AND CURB. |
| 25 | CONSTRUCT CONCRETE SPANDREL PER COUNTY STANDARDS 119. |
| 27 | REMOVE EXISTING COLD MIX ASPHALT AND EARTH OVER EXISTING PIPE FROM STA 10+72 TO STA 12+42. REPLACE WITH 6" MIN. THICK CLASS 4 CONCRETE, THEN PLACE (0.50' VAR. THICKNESS) HMA, TYPE A 3/4" AGGREGATE GRADATION, PG76-22 PM HOT MIX ASPHALT PER DETAIL "A" ON SHEET 3. |

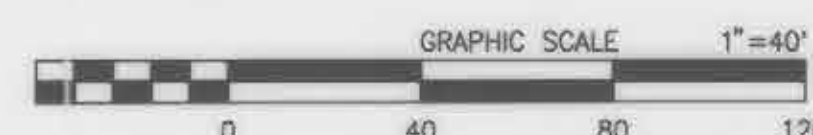
								SAN BERNARDINO COUNTY DEPARTMENT OF PUBLIC WORKS				CACTUS AVE PLAN AND PROFILE BLOOMINGTON							
CHANGES NO CHANGES		RESIDENT ENGINEER		DATE				DESIGNED BY: DJ DRAWN BY: DJ/MDV CHECKED BY: ESR RECOMMENDED BY: <i>Mervat N. Mirmahal</i> 11/8/21 MERVAT N. MIRMAHAL, P.E. ENGINEERING MANAGER		DATE									
FIELD CHANGES						 THOMAS BUSTAMANTE, P.E. SUPERVISING ENGINEER		11/4/21 DATE		APPROVED BY: <i>Noel Castillo</i> 11/8/21 NOEL CASTILLO, P.E. DEPUTY DIRECTOR		DATE		FROM STA 7+40 TO STA 17+00					
										J.L. REF. J.L.11766		W.O. NO. H15045		PLAN SCALE 1" = 40'		SHT. NO. 5		TOT. SHTS. 9	







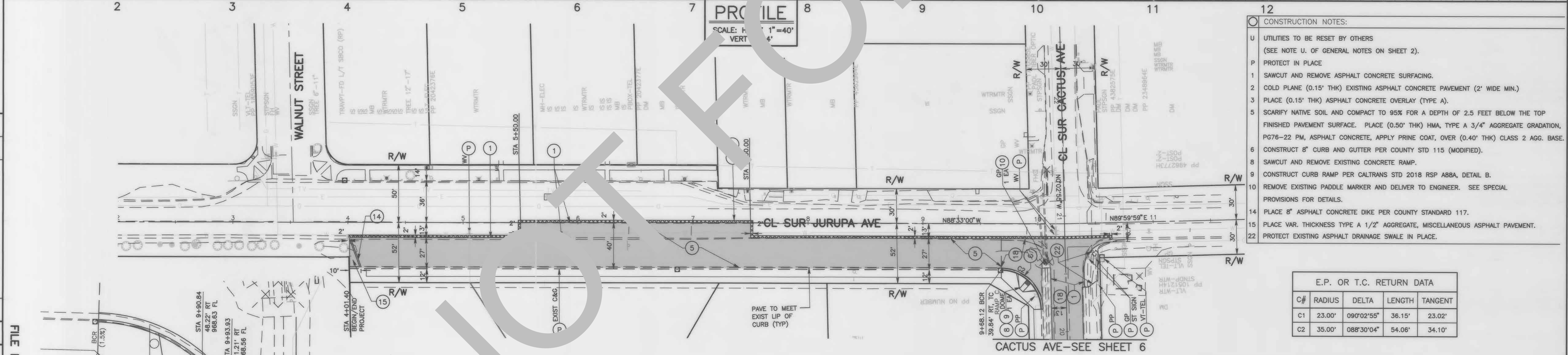
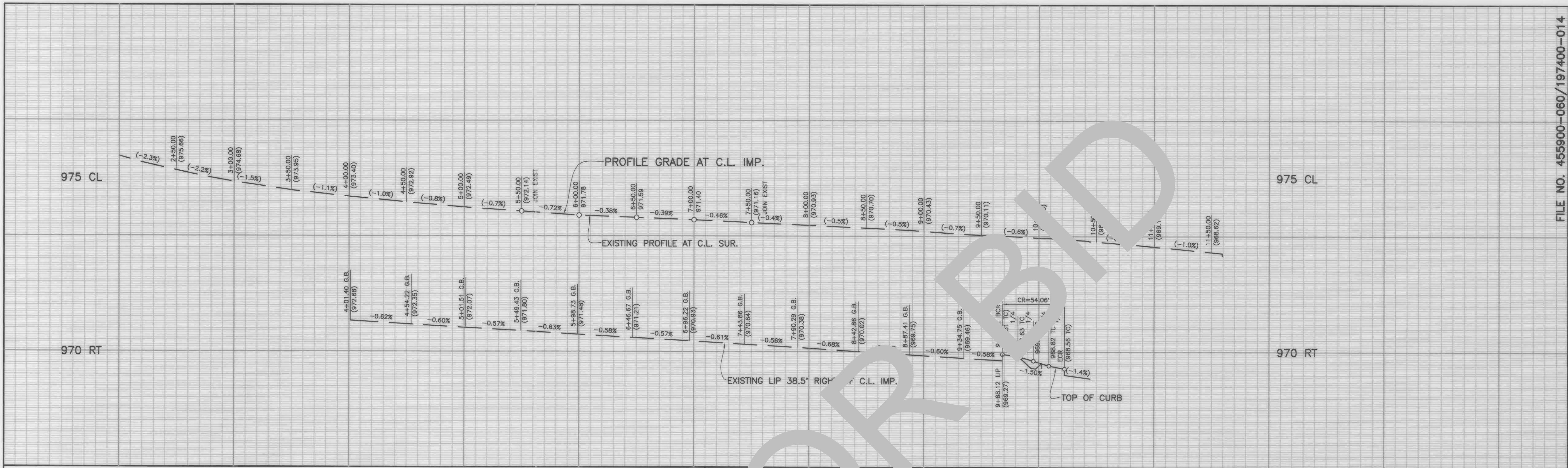
E.P. OR T.C. RETURN DATA				
C#	RADIUS	DELTA	LENGTH	TANGENT
C1	23.00'	090°02'55"	36.15'	23.02'
C2	35.00'	088°30'04"	54.06'	34.10'



- | CONSTRUCTION NOTES: | |
|---------------------|--|
| U | UTILITIES TO BE RESET BY OTHERS
(SEE NOTE U. OF GENERAL NOTES ON SHEET 2). |
| P | PROTECT IN PLACE. |
| 1 | SAWCUT AND REMOVE ASPHALT CONCRETE SURFACING. |
| 5 | PLACE (0.50" THK) HMA, TYPE A 3/4" AGGREGATE GRADATION, PG76-22 PM, ASPHALT CONCRETE, OVER (0.40" THK) CLASS 2 AGGREGATE BASE. |
| 6 | CONSTRUCT 8" CURB AND GUTTER PER COUNTY STD 115 (MODIFIED). |
| 8 | SAWCUT AND REMOVE EXISTING CONCRETE RAMP. |
| 9 | CONSTRUCT CURB RAMP PER CALTRANS STD 2018 RSP AB8A, DETAIL B. |
| 10 | REMOVE EXISTING PADDLE MARKER AND DELIVER TO ENGINEER. SEE SPECIAL PROVISIONS FOR DETAILS. |
| 12 | MANHOLE TO BE ADJUSTED TO GRADE BY OTHERS. |
| 13 | CONSTRUCT SHOULDER BACKING PER SHEET 3. |
| 16 | ADJUST EXISTING GRATE TO GRADE. |
| 17 | PLACE (0.15" THK & VAR.) HMA, TYPE A 3/4" AGGREGATE GRADATION, PG76-22 PM ASPHALT CONCRETE OVERLAY OVER EXISTING ASPHALT PAVING. (TACK COAT BETWEEN ALL LAYERS). |
| 18 | PLACE (0.50" THK) HMA, TYPE A 3/4" AGGREGATE GRADATION, PG76-22 PM, ASPHALT CONCRETE, OVER (0.50" THK) CLASS 2 AGGREGATE BASE. |
| 22 | PROTECT EXISTING ASPHALT DRAINAGE SWALE IN PLACE. |



			SAN BERNARDINO COUNTY DEPARTMENT OF PUBLIC WORKS				CACTUS AVE PLAN AND PROFILE BLOOMINGTON				
			DESIGNED BY:	DRAWN BY:	CHECKED BY:	RECOMMENDED BY:					
			DJ	DJ/MDV	ESR	 NOEL CASTILLO, P.E. ENGINEERING MANAGER	11/8/21 DATE				
MARK	CHANGES NO CHANGES	RESIDENT ENGINEER	DATE			APPROVED BY:					
FIELD CHANGES				 THOMAS BUSTAMANTE, P.E. SUPERVISOR		11/8/21 DATE		 NOEL CASTILLO, P.E. ENGINEERING MANAGER		11/8/21 DATE	
						J.L. REF.		W.O. NO.		PLAN SCALE	
						J.L.11766		H15045		1"=40'	
										SHT. NO.	
										6	
										TOT. SHT'S	
										9	

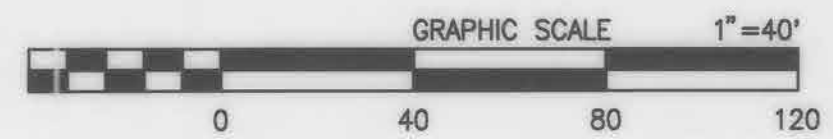


- CONSTRUCTION NOTES:
- U UTILITIES TO BE RESET BY OTHERS (SEE NOTE U. OF GENERAL NOTES ON SHEET 2).
 - P PROTECT IN PLACE
 - 1 SAWCUT AND REMOVE ASPHALT CONCRETE SURFACING.
 - 2 COLD PLANE (0.15' THK) EXISTING ASPHALT CONCRETE PAVEMENT (2' WIDE MIN.)
 - 3 PLACE (0.15' THK) ASPHALT CONCRETE OVERLAY (TYPE A).
 - 5 SCARIFY NATIVE SOIL AND COMPACT TO 95% FOR A DEPTH OF 2.5 FEET BELOW THE TOP FINISHED PAVEMENT SURFACE. PLACE (0.50' THK) HMA, TYPE A 3/4" AGGREGATE GRADATION, PG76-22 PM, ASPHALT CONCRETE, APPLY PRIME COAT, OVER (0.40' THK) CLASS 2 AGG. BASE.
 - 6 CONSTRUCT 8" CURB AND GUTTER PER COUNTY STD 115 (MODIFIED).
 - 8 SAWCUT AND REMOVE EXISTING CONCRETE RAMP.
 - 9 CONSTRUCT CURB RAMP PER CALTRANS STD 2018 RSP A88A, DETAIL B.
 - 10 REMOVE EXISTING PADDLE MARKER AND DELIVER TO ENGINEER. SEE SPECIAL PROVISIONS FOR DETAILS.
 - 14 PLACE 8" ASPHALT CONCRETE DIKE PER COUNTY STANDARD 117.
 - 15 PLACE VAR. THICKNESS TYPE A 1/2" AGGREGATE, MISCELLANEOUS ASPHALT PAVEMENT.
 - 22 PROTECT EXISTING ASPHALT DRAINAGE SWALE IN PLACE.

E.P. OR T.C. RETURN DATA				
C#	RADIUS	DELTA	LENGTH	TANGENT
C1	23.00'	090°02'55"	36.15'	23.02'
C2	35.00'	088°30'04"	54.06'	34.10'

NOTE: RAMP C DETAIL ARE INTERPOLATED AND APPROXIMATE ONLY. ELEVATIONS SHOWN ON DISTANCE SHALL GOVERN AS SHOWN PER CALTRANS STANDARD A88A RAMP GRADES AND DISPROF ABOVE FOR ADDITIONAL INFORMATION. SEE PLAN VIEW AND

RAMP C
N.T.S.



MARK

CHANGES

NO CHANGES

RESIDENT ENGINEER

DATE

FIELD CHANGES

REGISTERED PROFESSIONAL ENGINEER

No. 72136

CIVIL

STATE OF CALIFORNIA

SAN BERNARDINO COUNTY

DEPARTMENT OF PUBLIC WORKS

DESIGNED BY: DJ

DRAWN BY: DJ/MDV

CHECKED BY: ESR

RECOMMENDED BY: [Signature]

11/8/21

DATE

APPROVED BY: [Signature]

11/8/21

DATE

THOMAS RUSTAMONTE, P.E.

SUPERVISING ENGINEER

NOEL CASTILLO, P.E.

DEPUTY DIRECTOR

JURUPA AVE

PLAN AND PROFILE

BLOOMINGTON AREA

FROM STA 4+01.40 TO STA 10+62.03

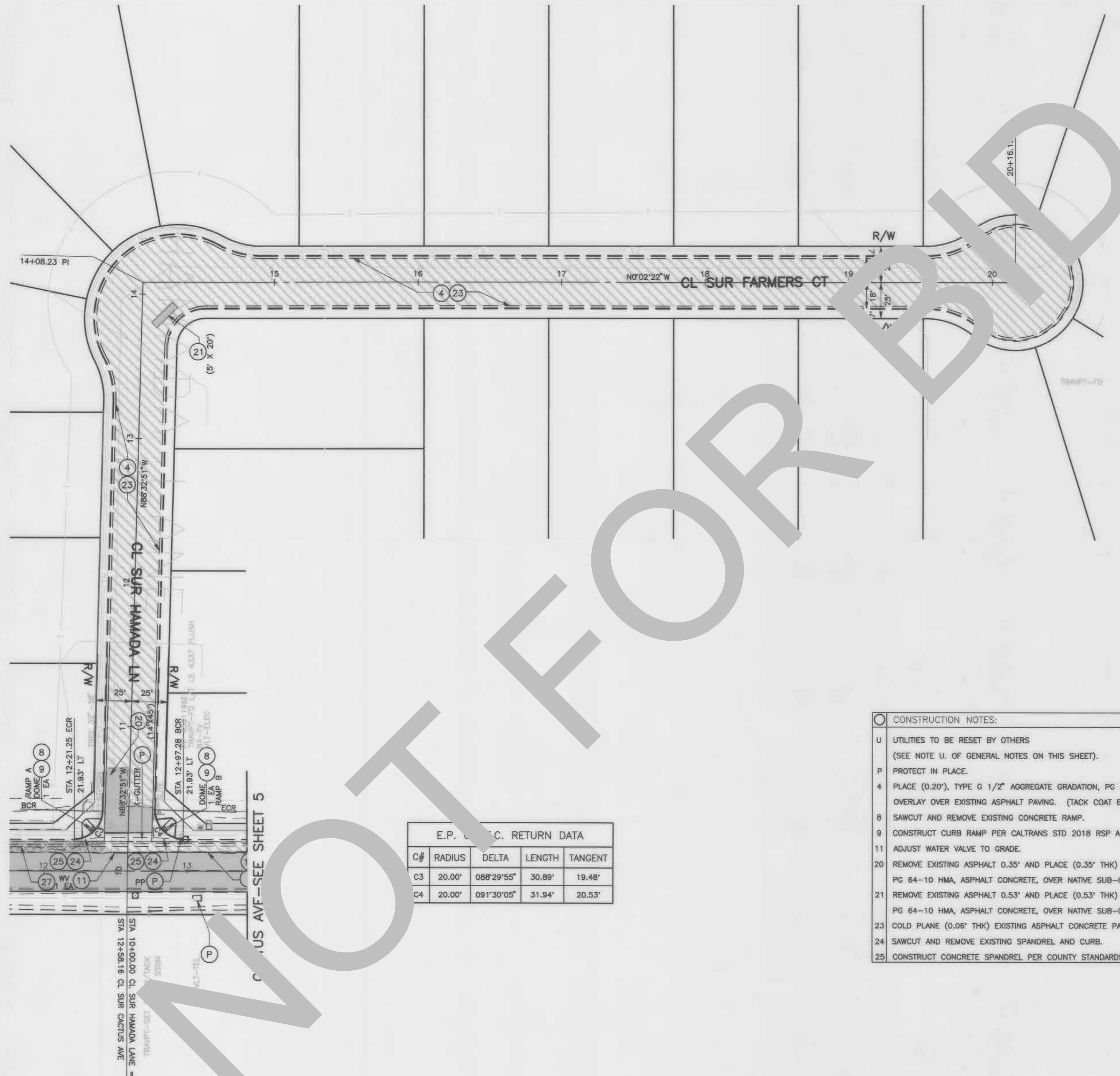
J.L. REF. J.L.11766

W.O. NO. H15045

PLAN SCALE 1"=40'

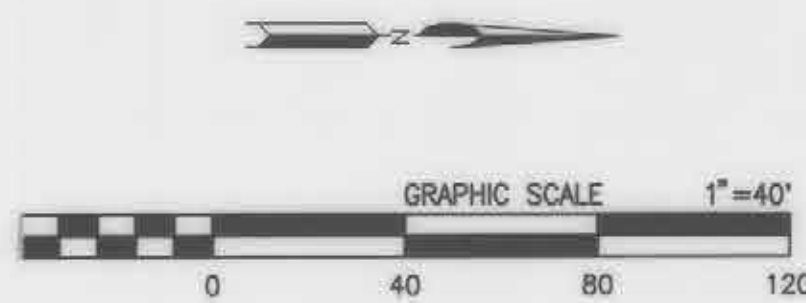
SHT. NO. 7

TOT. SHTS. 9

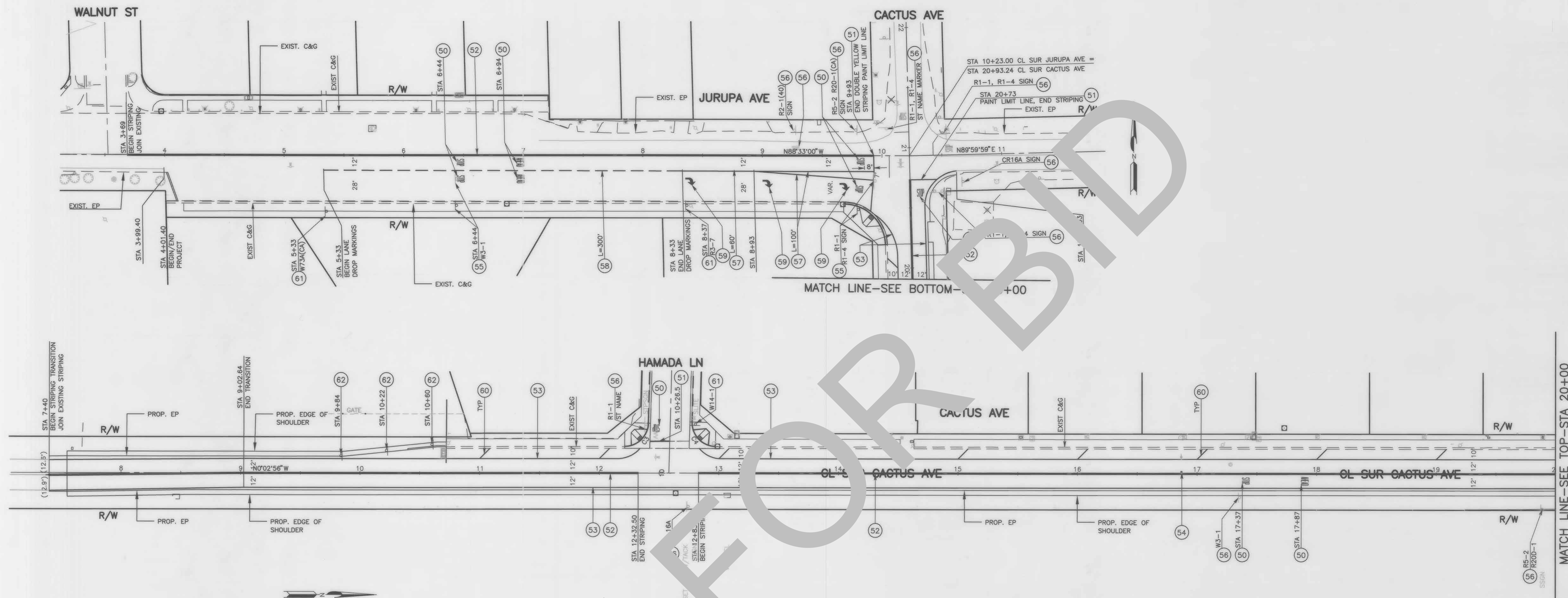


E.P. C. RETURN DATA				
C#	RADIUS	DELTA	LENGTH	TANGENT
C3	20.00'	088°29'55"	30.89'	19.48'
C4	20.00'	091°30'05"	31.94'	20.53'

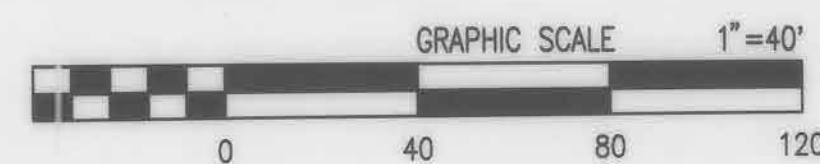
- CONSTRUCTION NOTES:
- U UTILITIES TO BE RESET BY OTHERS
(SEE NOTE U. OF GENERAL NOTES ON THIS SHEET).
 - P PROTECT IN PLACE.
 - 4 PLACE (0.20"), TYPE G 1/2" AGGREGATE GRADATION, PG 64-16 RHMA ASPHALT CONCRETE OVERLAY OVER EXISTING ASPHALT PAVING. (TACK COAT BETWEEN ALL LAYERS).
 - 8 SAWCUT AND REMOVE EXISTING CONCRETE RAMP.
 - 9 CONSTRUCT CURB RAMP PER CALTRANS STD. 2018 RSP AB8A, DETAIL B.
 - 11 ADJUST WATER VALVE TO GRADE.
 - 20 REMOVE EXISTING ASPHALT 0.35' AND PLACE (0.35' THK) HMA, TYPE A 3/4" AGGREGATE GRADATION, PG 64-10 HMA, ASPHALT CONCRETE, OVER NATIVE SUB-GRADE.
 - 21 REMOVE EXISTING ASPHALT 0.53' AND PLACE (0.53' THK) HMA, TYPE A 3/4" AGGREGATE GRADATION, PG 64-10 HMA, ASPHALT CONCRETE, OVER NATIVE SUB-GRADE.
 - 23 COLD PLANE (0.06' THK) EXISTING ASPHALT CONCRETE PAVEMENT.
 - 24 SAWCUT AND REMOVE EXISTING SPANDREL AND CURB.
 - 25 CONSTRUCT CONCRETE SPANDREL PER COUNTY STANDARDS 119.



FIELD CHANGES			SAN BERNARDINO COUNTY DEPARTMENT OF PUBLIC WORKS		HAMADA LN AND FARMERS CT PLAN BLOOMINGTON AREA	
			DESIGNED BY: DJ DRAWN BY: DJ/MDV CHECKED BY: ESR RECOMMENDED BY: <i>[Signature]</i> 11/8/21 DATE: 11/8/21 APPROVED BY: <i>[Signature]</i> 11/8/21 DATE: 11/8/21 THOMAS BUSTAMONTE, P.E. SUPERVISING ENGINEER NOEL CASTILLO, P.E. DEPUTY DIRECTOR		J.L. REF. J.L.11766 W.D. NO. H15045 PLAN SCALE 1"=40' SMT. NO. 8 TOT. SMT'S. 9	



- | | |
|----|--|
| 50 | PAIN T PAVEMENT MARKINGS PER THE CALTRANS 2018 STANDARD PLAN A24D. |
| 51 | PAINT 12-INCH WHITE LIMIT LINE PER THE CALTRANS 2018 STANDARD PLAN A24E. |
| 52 | PAINT DOUBLE-6-INCH YELLOW STRIPE PER THE CALTRANS 2018 STANDARD PLAN A20A, DETAIL 22. |
| 53 | PAINT 6-INCH WHITE EDGELINE PER THE CALTRANS 2018 STANDARD PLAN A20B, DETAIL 27B. |
| 54 | INSTALL BLUE RETROREFLECTIVE RAISED PAVEMENT MARKER FOR THE EXISTING FIRE HYDRANT
PER THE CALIFORNIA MUTCD DATED 2014, FIGURE 3B-102(CA). |
| 55 | EXISTING SIGN(S) TO BE RESET LATERALLY AS SHOWN ON PLAN AND PER THE CALIFORNIA
MUTCD DATED 2014, FIGURES 2A-2(CA) AND 2C-13(CA). |
| 56 | PROTECT IN PLACE EXISTING SIGN(S), STRIPING, DELINEATOR, OBJECT MARKER OR PAVEMENT MARKING(S). |
| 57 | PAINT 8" WHITE CHANNELIZING LINE PER THE CALTRANS 2018 STANDARD PLAN A20D, DETAIL 38. |
| 58 | PAINT 8" WHITE LANE DRO MARKINGS PER THE CALTRANS 2018 STANDARD PLAN A20C, DETAIL 37B. |
| 59 | PAINT TYPE IV (R) RIGHT TURN ARROW PAVEMENT MARKING PER THE CALTRANS 2018 STANDARD PLAN A24A. |
| 60 | PAINT 8" WHITE HATCH MARKING AT 45"-100" SPACING PER CA MUTCD 2014, SEC. 3B.24. |
| 61 | INSTALL ROADSIDE SIGN PER CA MUTCD 2014, FIG. 2A-2(CA). |
| 62 | INSTALL CLASS 1-TYPE F DELINEATOR PER CA MUTCD 2014, FIG. 3F-101(CA). |

[illegible]